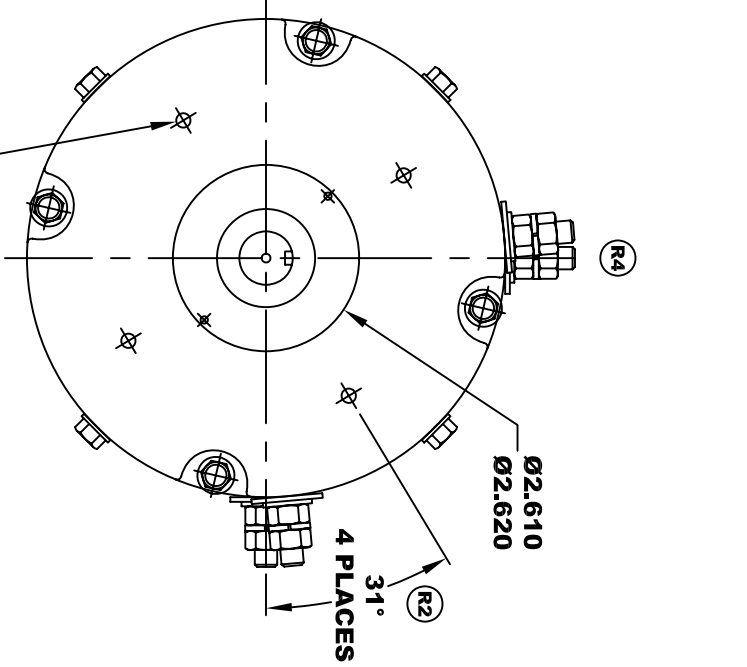


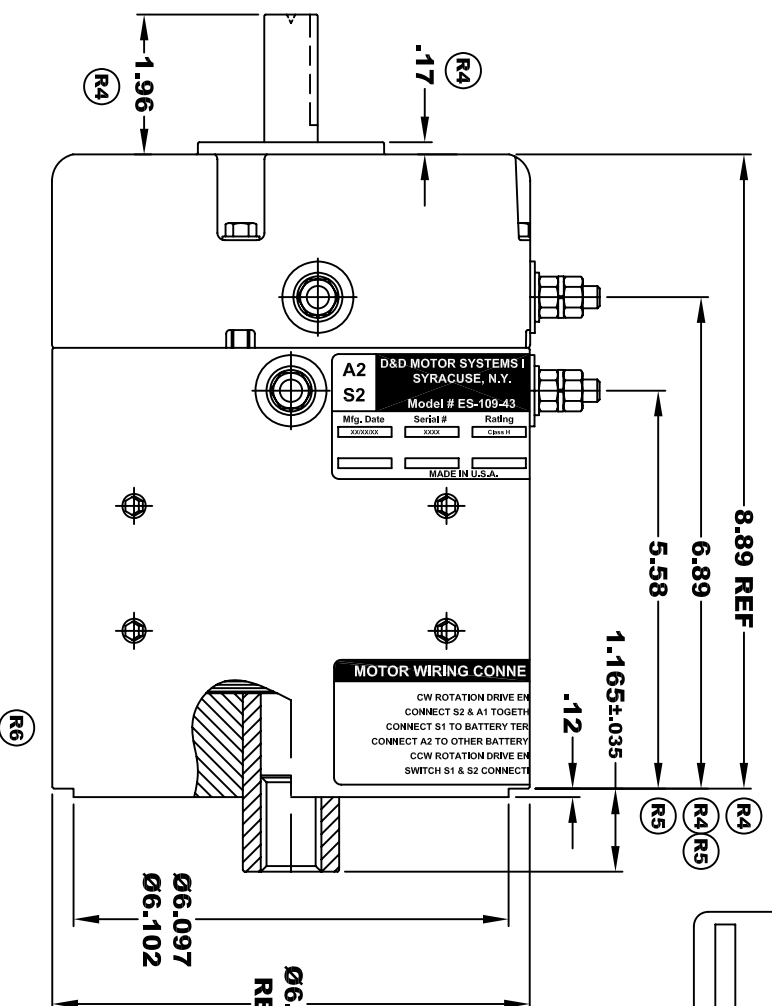
R1 REVISED VIEW



1/4-20 UNC THREAD
TAPPED THRU
EQUALLY SPACED
ON A Ø4.50 B.C.
4 PLACES

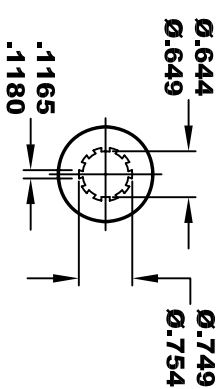
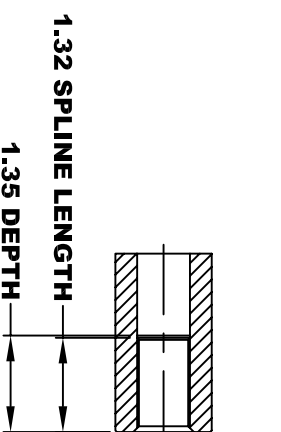
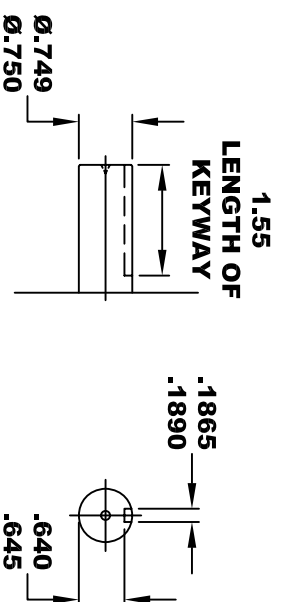
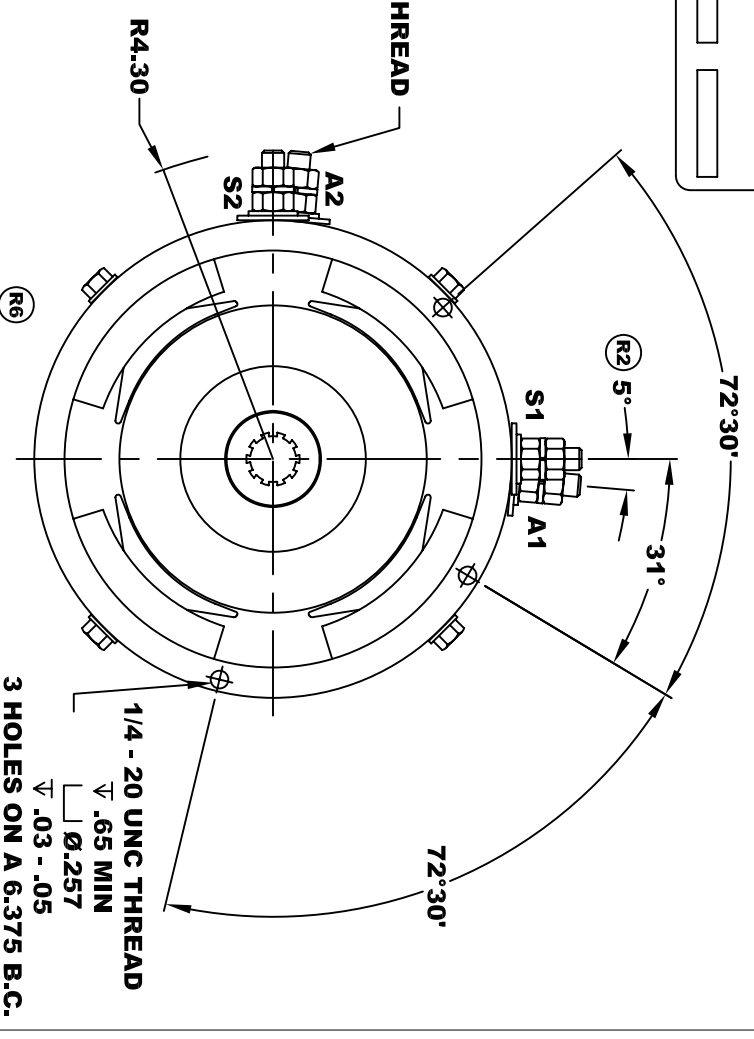
D&D MOTOR SYSTEMS INC.			
A2	S2	A1	S1
SYRACUSE N.Y.			
Model # ES-109-43			
Mfg. Date	Serial #	Rating	Voltage
XXXXXX	XXXX	CLASS -H	36 / 48
MADE IN U.S.A.			

**TORQUE SPECIFICATION FOR
POWER CABLE SECURING TOP NUTS**
5/16-18 UNC - 110 IN / LBS MAX

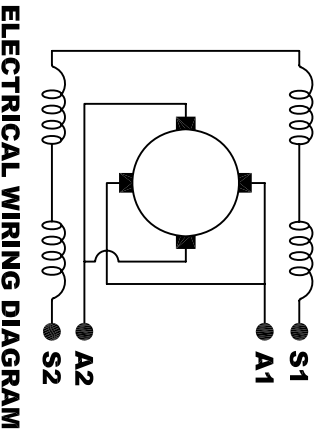


MOTOR WIRING CONNE
CW ROTATION DRIVE EN
CONNECT S2 & A1 TOGETH
CONNECT S1 TO BATTERY TER
CONNECT A2 TO OTHER BATTERY
CCW ROTATION DRIVE EN
SWITCH S1 & S2 CONNECT

5/16 - 18 UNC THREAD
4 TERMINALS



MOTOR WEIGHT 48 LBS
CLASS "H" INSULATION
PERFORMANCE SPEC: 43



ELECTRICAL WIRING DIAGRAM

MOTOR WIRING CONNECTIONS:
CW ROTATION DRIVE END
CONNECT S2 & A1 TOGETHER
CONNECT S1 TO BATTERY TERMINAL
CCW ROTATION DRIVE END
CONNECT A2 TO OTHER BATTERY TERMINAL
SWITCH S1 & S2 CONNECTIONS

THIS PRINT IS THE PROPERTY OF D&D MOTOR SYSTEMS INC.
DO NOT SCALE
WORK TO DIMENSIONS
TOLERANCES UNLESS OTHERWISE SPECIFIED ARE AS FOLLOWS
.XX _____ .01
.XXX _____ .005
.XX ROUGH CASTING _____ .03
HOLES _____ -.001 / +.006
ANGLES _____ 0°30"

D & D MOTOR SYSTEMS INC
MOTOR OUTLINE

SIZE	DRAWN DATE	RELEASE DATE	DWG NO. / PART NO.	REV
B	4-7-03		ES-109-43 (R)	R6
SCALE	STF	DRAWN BY	MJG	REV DATE
				12-2-15