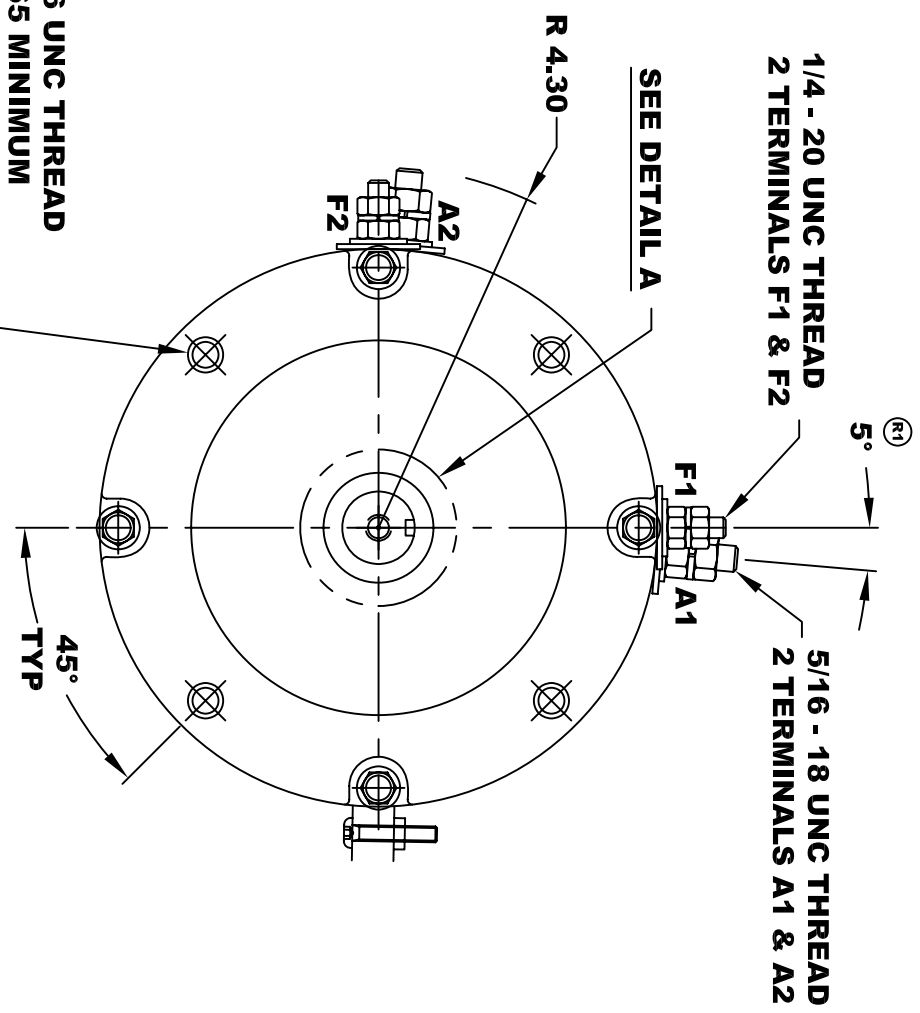


D&D MOTOR SYSTEMS INC. SYRACUSE N.Y.			
A2	Model # ES-10A		A1
F2	Mfg. Date	Serial #	Rating
	XXXXXX	XXXX	Class H
			S2 - 60 MIN
Voltage	Current	R.P.M.	H.P.
36	130 / 15	1900	5.0
MADE IN U.S.A.			

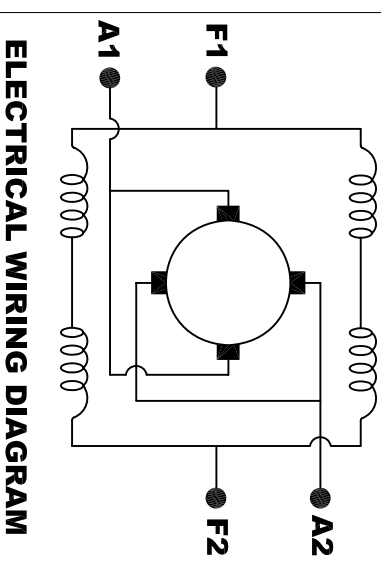
**TORQUE SPECIFICATION FOR
POWER CABLE SECURING TOP NUTS**
5/16-18 UNC (A1 / A2) - 110 IN / LBS MAX
1/4-20 UNC (F1 / F2) - 50 IN / LBS MAX



5/16 x 18 UNC THREAD
▽ .75
DETAIL A

3/8 - 16 UNC THREAD
▽ .65 MINIMUM
.03 -.05 x 45° CHAMFER
4 PLACES, ON A Ø5.875 B. C.

MOTOR WEIGHT: 50 LBS
CLASS "H" INSULATION
PERFORMANCE SPEC: 5



ELECTRICAL WIRING DIAGRAM

MOTOR WIRING CONNECTIONS:
CW ROTATION DRIVE END
CONNECT A1 & F1 TO ONE BATTERY TERMINAL
CCW ROTATION DRIVE END
CONNECT A2 & F2 TO OTHER BATTERY TERMINAL
SWITCH F1 & F2 CONNECTIONS

THIS PRINT IS THE PROPERTY OF D&D MOTOR SYSTEMS INC.
DO NOT SCALE
WORK TO DIMENSIONS
TOLERANCES UNLESS OTHERWISE SPECIFIED ARE AS FOLLOWS

.XX	_____	.01
.XXX	_____	.005
.XX	ROUGH CASTING	.03
HOLES	_____	-.001 / +.006
ANGLES	_____	0°30"

D & D MOTOR SYSTEMS INC	
MOTOR OUTLINE	
SIZE	B
DRAWN DATE	3-12-02
RELEASE DATE	
DWG NO. / PART NO.	ES-10A
SCALE	STF
DRAWN BY	MJG
REV	R2
REV DATE	5-1-13