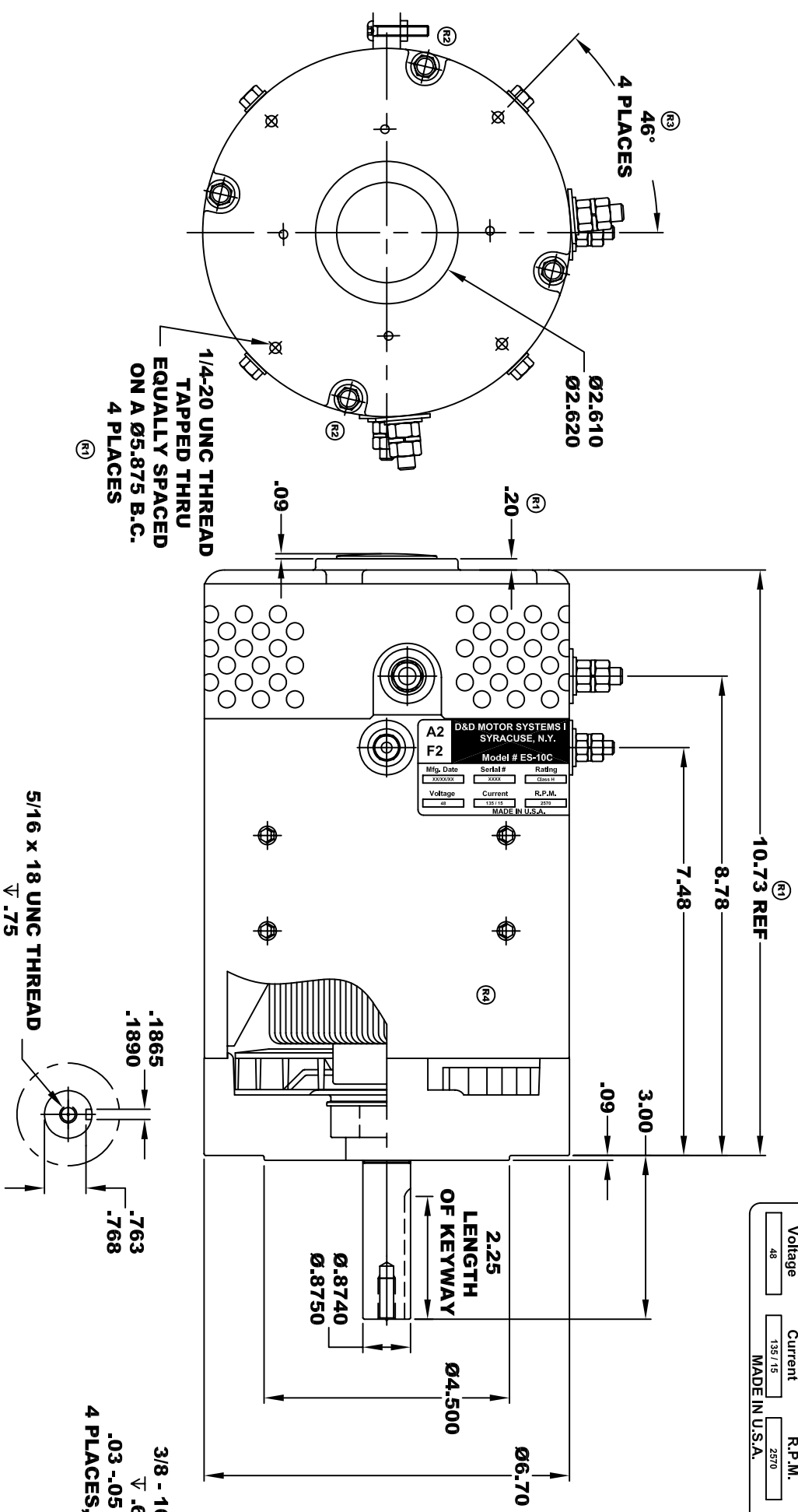
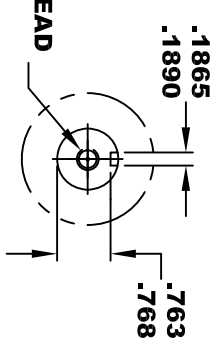


<b>D&amp;D MOTOR SYSTEMS INC.</b>		<b>A1</b>
<b>SYRACUSE N.Y.</b>		<b>F1</b>
<b>Model # ES-10C</b>		
Mfg. Date	Serial #	Rating
XXXXXX	XXXX	Class H
Voltage	Current	R.P.M.
48	135/15	2870
MADE IN U.S.A.		H.P.
		6.8
		Duty
		S2 - 60 MIN

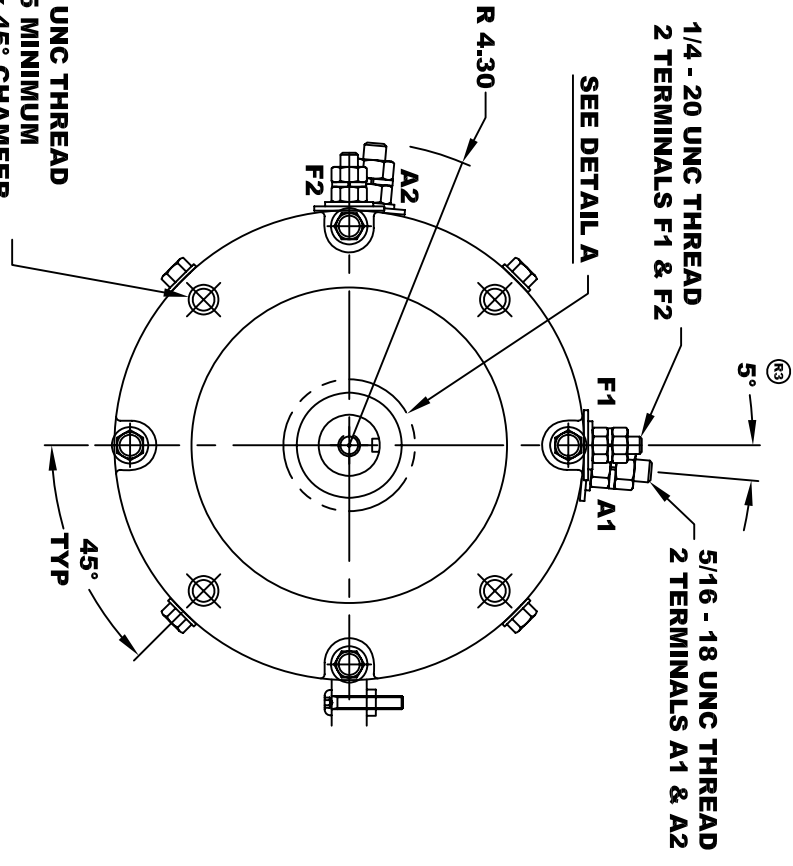
**TORQUE SPECIFICATION FOR  
POWER CABLE SECURING TOP NUTS**  
5/16-18 UNC (A1 / A2) - 110 IN / LBS MAX  
1/4-20 UNC (F1 / F2) - 50 IN / LBS MAX



**DETAIL A**



3/8 - 16 UNC THREAD  
TYP. .65 MINIMUM  
.03 -.05 x 45° CHAMFER  
4 PLACES, ON A Ø5.875 B.C.



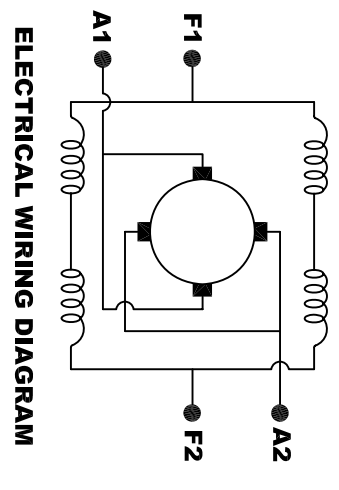
**MOTOR WEIGHT: 50 LBS**  
**CLASS "H" INSULATION**  
**PERFORMANCE SPEC: 5**

**D & D MOTOR SYSTEMS INC**

**MOTOR OUTLINE**

SIZE	DRAWN DATE	RELEASE DATE	DWG NO. / PART NO.	REV
B	3-29-02		ES-10C	R4
SCALE	STF	DRAWN BY	MJG	REV DATE
				5-1-13

**MOTOR WIRING CONNECTIONS:**  
**CW ROTATION DRIVE END**  
**CONNECT A1 & F1 TO ONE BATTERY TERMINAL**  
**CCW ROTATION DRIVE END**  
**CONNECT A2 & F2 TO OTHER BATTERY TERMINAL**  
**SWITCH F1 & F2 CONNECTIONS**



**ELECTRICAL WIRING DIAGRAM**

THIS PRINT IS THE PROPERTY OF D&D MOTOR SYSTEMS INC.  
DO NOT SCALE  
WORK TO DIMENSIONS  
TOLERANCES UNLESS OTHERWISE SPECIFIED ARE AS FOLLOWS  
.XX \_\_\_\_\_ .01  
.XXX \_\_\_\_\_ .005  
.XX ROUGH CASTING \_\_\_\_\_ .03  
HOLES \_\_\_\_\_ -.001 / +.006  
ANGLES \_\_\_\_\_ 0°30"