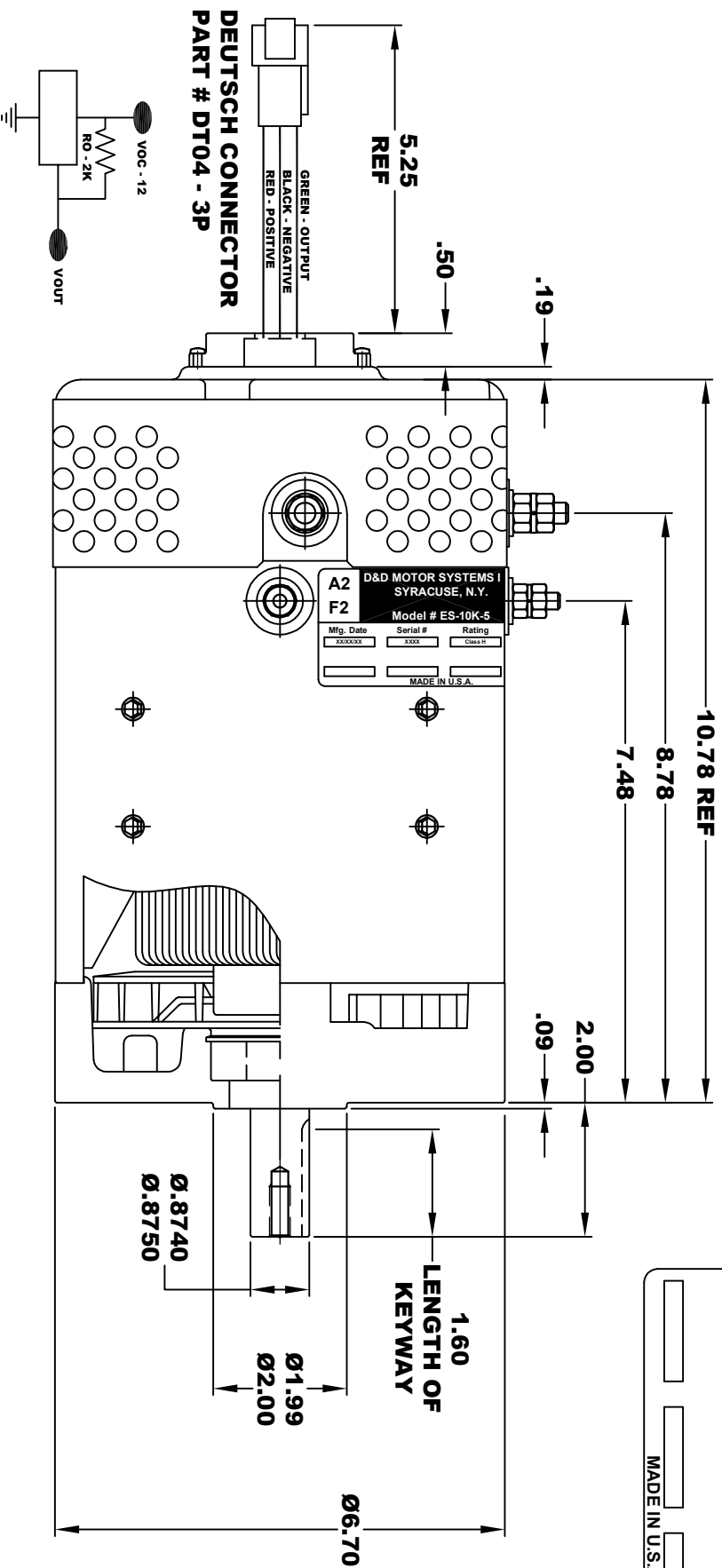
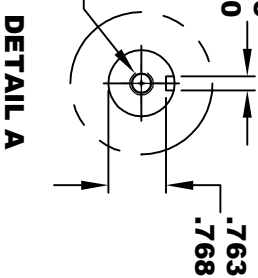


<b>D&amp;D MOTOR SYSTEMS INC.</b>			
<b>SYRACUSE N.Y.</b>			
<b>A2</b>	<b>A1</b>	<b>F1</b>	<b>F2</b>
<b>Model # ES-10K-5</b>			
Mfg. Date	Serial #	Rating	Voltage
XX/XX/XX	XXXX	CLASS -H	XX
MADE IN U.S.A.			

**TORQUE SPECIFICATION FOR  
POWER CABLE SECURING TOP NUTS**  
**5/16-18 UNC (A1 / A2) - 110 IN / LBS MAX**  
**1/4-20 UNC (F1 / F2) - 50 IN / LBS MAX**

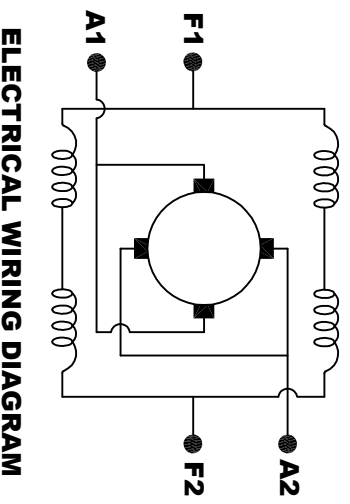


5/16 x 18 UNC THREAD  
 ▽ .75



**MOTOR WEIGHT: 50 LBS**  
**CLASS "H" INSULATION**  
**PERFORMANCE SPEC: 5**

**SPEED SENSOR ELECTRICAL SPECIFICATION:**  
**-4.5V TO 24V OPERATING VOLTAGE**  
**-20°C TO 85°C OPERATING TEMPERATURE**  
**-CURRENT SINKING UP TO 25mA**  
**-AN EXTERNAL OUTPUT PULL UP RESISTOR IS REQUIRED**  
**-SENSOR IS DESIGNED TO OPERATE WITH 4 N/S POLEPAIRS**  
**THE OPERATIONAL DISTANCE BETWEEN THE MAGNET**  
**AND THE HOUSING, INCLUDING ANY RUNOUT**  
**SHOULD NOT EXCEED .030 INCHES**



**ELECTRICAL WIRING DIAGRAM**

**MOTOR WIRING CONNECTIONS:**  
**CGW ROTATION DRIVE END**  
**CONNECT A1 & F1 TO ONE BATTERY TERMINAL**  
**CGW ROTATION DRIVE END**  
**CONNECT A2 & F2 TO OTHER BATTERY TERMINAL**  
**SWITCH F1 & F2 CONNECTIONS**

THIS PRINT IS THE PROPERTY OF D&D MOTOR SYSTEMS INC.  
 DO NOT SCALE  
 WORK TO DIMENSIONS  
 TOLERANCES UNLESS OTHERWISE SPECIFIED ARE AS FOLLOWS  
 .XX \_\_\_\_\_ .01  
 .XXX \_\_\_\_\_ .005  
 .XX ROUGH CASTING \_\_\_\_\_ .03  
 HOLES \_\_\_\_\_ .001 / +.006  
 ANGLES \_\_\_\_\_ 0.30"

**D & D MOTOR SYSTEMS INC**  
**MOTOR OUTLINE**

SIZE	DRAWN DATE	RELEASE DATE	DWG NO. / PART NO.	REV
B	11-28-16		ES-10K-5	
SCALE	STF	DRAWN BY	MJG	REV DATE