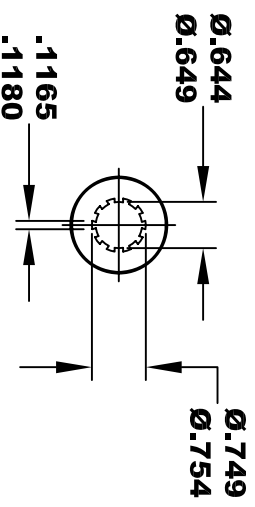
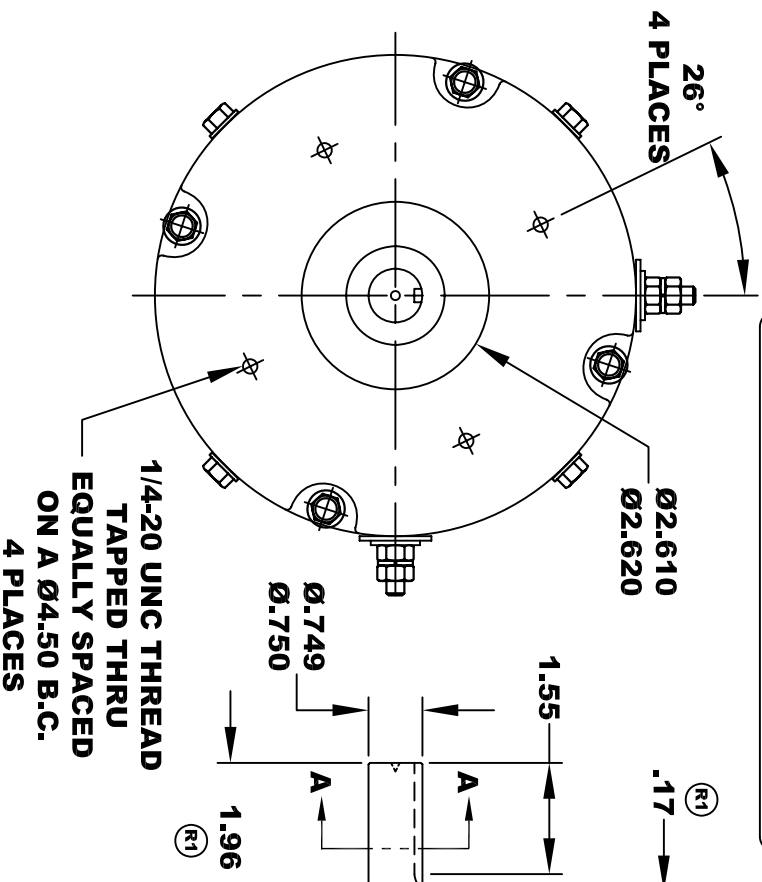
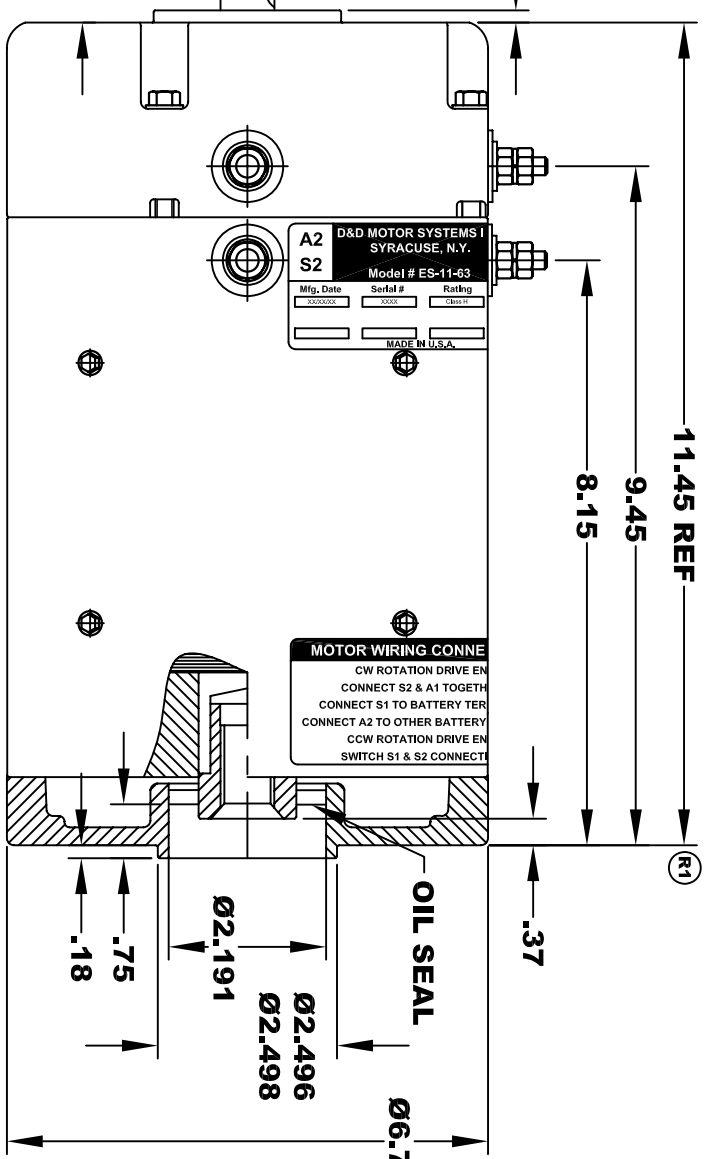


D&D MOTOR SYSTEMS INC.			
SYRACUSE N.Y.			
A2	Model # ES-11-63		A1
S2			S1
Mfg. Date	Serial #	Rating	Voltage
XXXXXX	XXXX	CLASS -I	36 / 48
MADE IN U.S.A.			

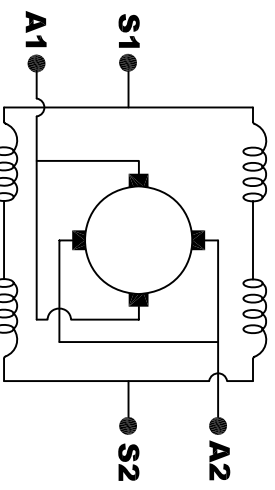


**INTERNAL SPLINE
HARDNESS OF SPLINE
TO BE R/C 46 - 53 (.02 DEPTH MIN)**



A2	D&D MOTOR SYSTEMS INC.	
S2	SYRACUSE, N.Y.	
	Model # ES-11-63	
Mfg. Date	Serial #	Rating
XXXXXX	XXXX	CLASS -I
MADE IN U.S.A.		

MOTOR WIRING CONNE
 CW ROTATION DRIVE EN
 CONNECT S2 & A1 TOGETHER
 CONNECT S1 TO BATTERY TER
 CONNECT A2 TO OTHER BATTERY
 CCW ROTATION DRIVE EN
 SWITCH S1 & S2 CONNECT

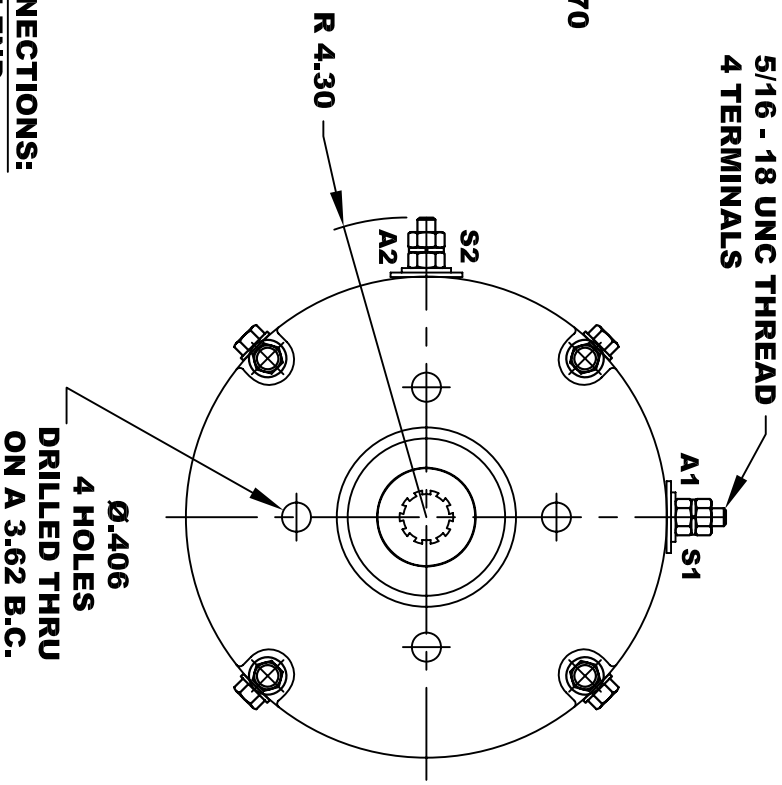


ELECTRICAL WIRING DIAGRAM

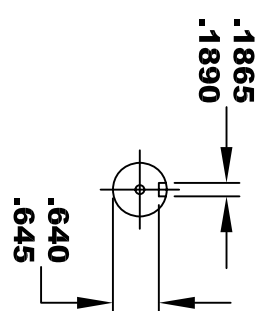
MOTOR WIRING CONNECTIONS:
 CW ROTATION DRIVE END
 CONNECT S2 & A1 TOGETHER
 CONNECT S1 TO BATTERY TERMINAL
 CONNECT A2 TO OTHER BATTERY TERMINAL
 CCW ROTATION DRIVE END
 SWITCH S1 & S2 CONNECTIONS

MOTOR WEIGHT: 57 LBS
CLASS "H" INSULATION
PERFORMANCE SPEC: 63

**TORQUE SPECIFICATION FOR
 POWER CABLE SECURING TOP NUTS**
5/16-18 UNC - 110 IN / LBS MAX



SECTION A-A



THIS PRINT IS THE PROPERTY OF D&D MOTOR SYSTEMS INC.
 DO NOT SCALE
 WORK TO DIMENSIONS
 TOLERANCES UNLESS OTHERWISE SPECIFIED ARE AS FOLLOWS

.XX	.01
.XXX	.005
.XX ROUGH CASTING	.03
HOLES	-.001 / +.006
ANGLES	0°30"

D & D MOTOR SYSTEMS INC

MOTOR OUTLINE

SIZE	DRAWN DATE	RELEASE DATE	DWG NO. / PART NO.	REV
B	9-23-05		ES-11-63	R1
SCALE	STF	DRAWN BY	MJG	REV DATE
				7-30-08