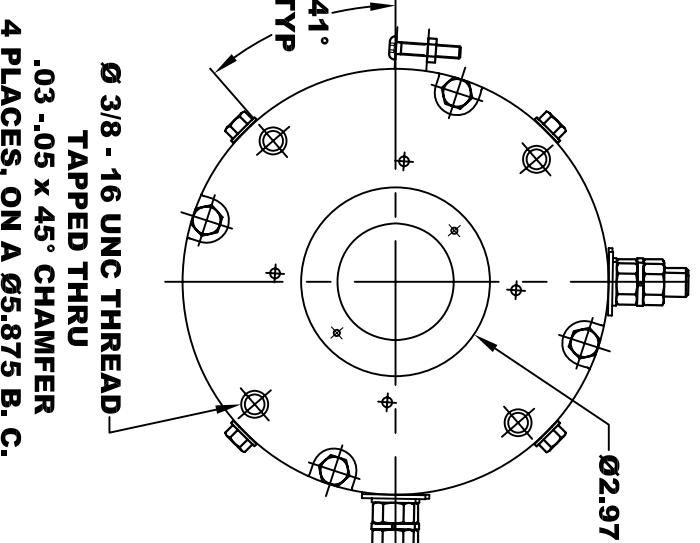
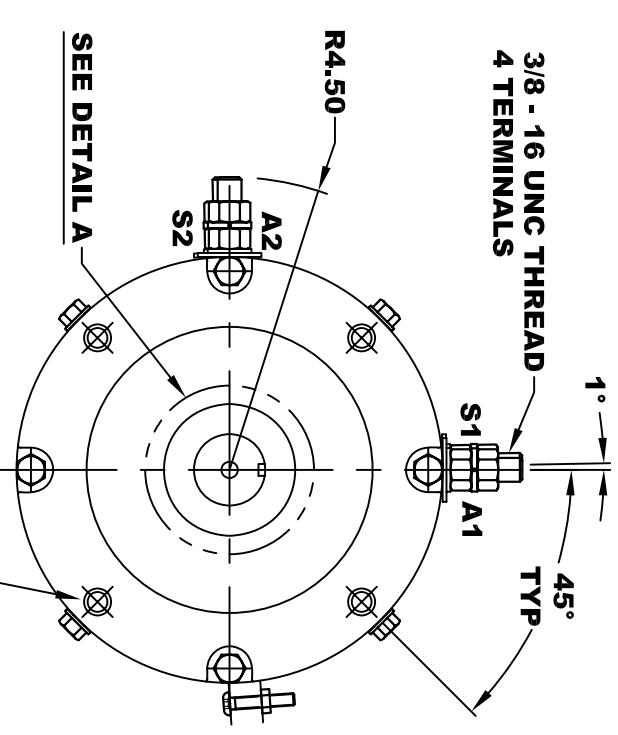
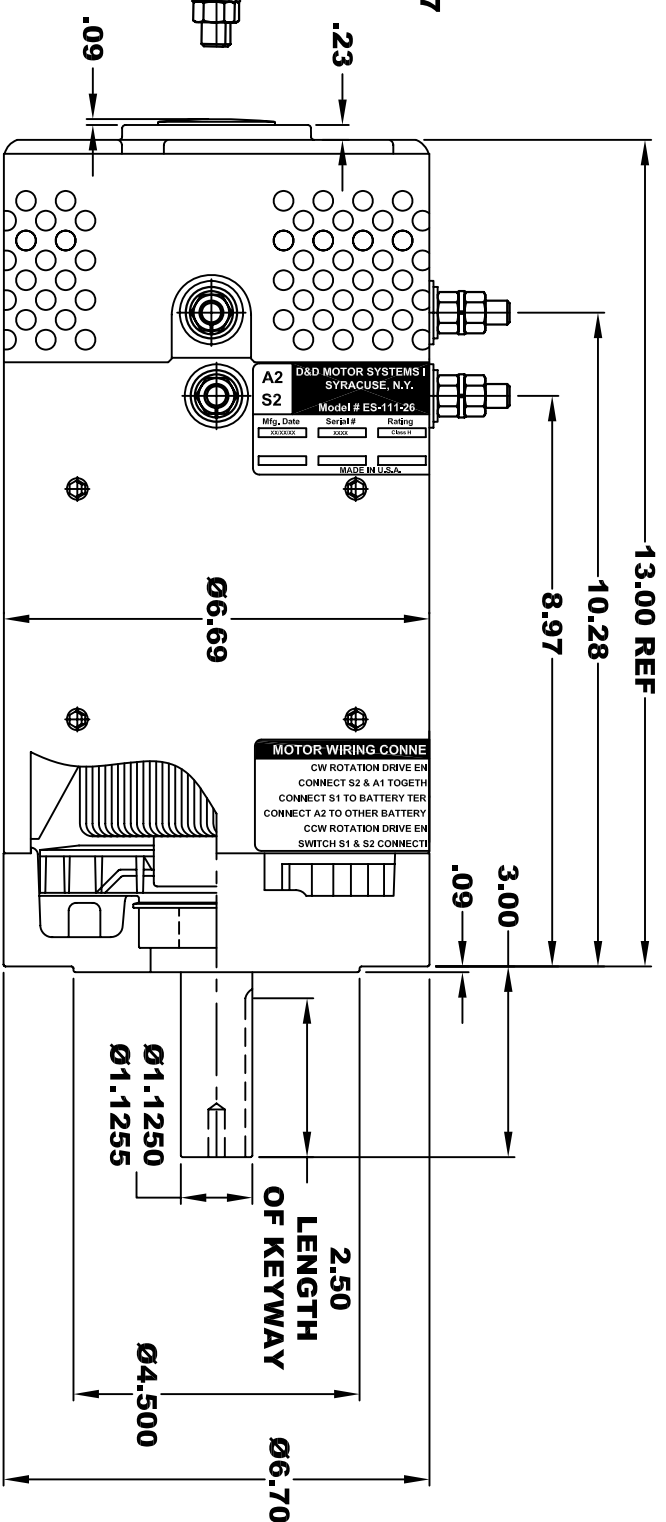
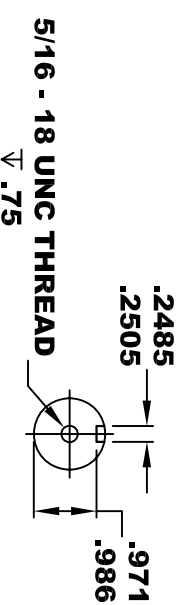


| | | |
|-----------------------------------|----------|-----------|
| D&D MOTOR SYSTEMS INC. | | A1 |
| SYRACUSE N.Y. | | S1 |
| Model # ES-111-26 | | |
| Mfg. Date | Serial # | Rating |
| XXXXXX | XXXX | Class H |
| Voltage | | XX |
| MADE IN U.S.A. | | |

**TORQUE SPECIFICATION FOR
POWER CABLE SECURING TOP NUTS
3/8-16 UNC - 140 IN / LBS MAX**

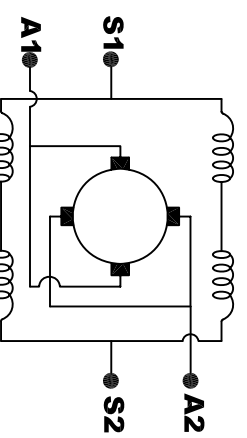


**Ø 3/8 - 16 UNC THREAD
TAPPED THRU
.03 -.05 x 45° CHAMFER
4 PLACES, ON A Ø5.875 B. C.**



DETAIL A

**MOTOR WEIGHT: 68 LBS
CLASS "H" INSULATION
PERFORMANCE SPEC: 26**



ELECTRICAL WIRING DIAGRAM

MOTOR WIRING CONNECTIONS:
CW ROTATION DRIVE END
 CONNECT S2 & A1 TOGETHER
 CONNECT S1 TO BATTERY TERMINAL
CCW ROTATION DRIVE END
 CONNECT A2 TO OTHER BATTERY TERMINAL
 SWITCH S1 & S2 CONNECTIONS

THIS PRINT IS THE PROPERTY OF D&D MOTOR SYSTEMS INC.
 DO NOT SCALE
 WORK TO DIMENSIONS
 TOLERANCES UNLESS OTHERWISE SPECIFIED ARE AS FOLLOWS
 .XX _____ .01
 .XXX _____ .005
 .XX ROUGH CASTING _____ .03
 HOLES _____ -.001 / +.006
 ANGLES _____ 0°30"

D & D MOTOR SYSTEMS INC
MOTOR OUTLINE

| | | | | |
|-------|------------|--------------|--------------------|----------|
| SIZE | DRAWN DATE | RELEASE DATE | DWG NO. / PART NO. | REV |
| B | 8-9-04 | | ES-111-26 | |
| SCALE | STF | DRAWN BY | MJG | REV DATE |