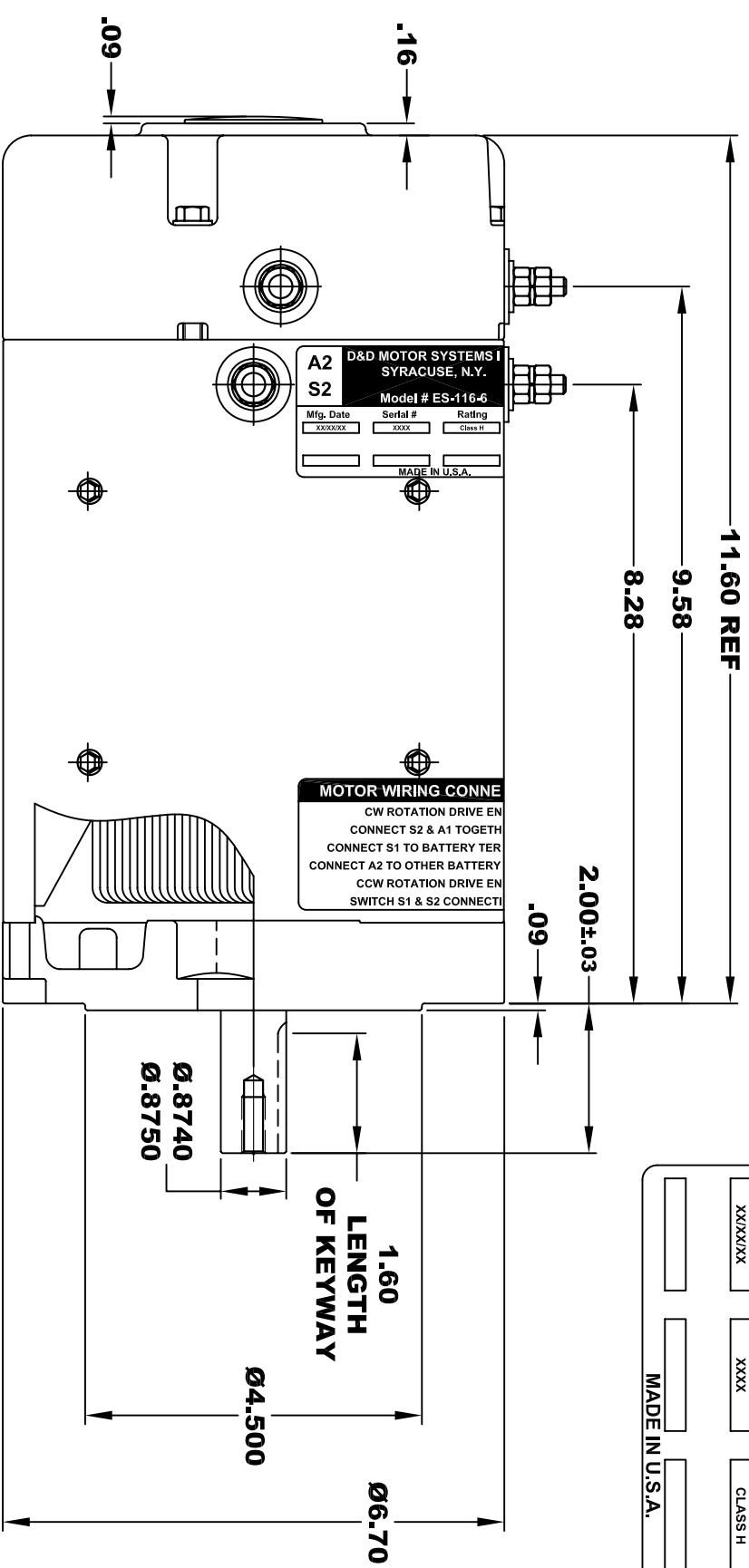


**TORQUE SPECIFICATION FOR
POWER CABLE SECURING TOP NUTS
5/16-18 UNC - 110 IN / LBS MAX**

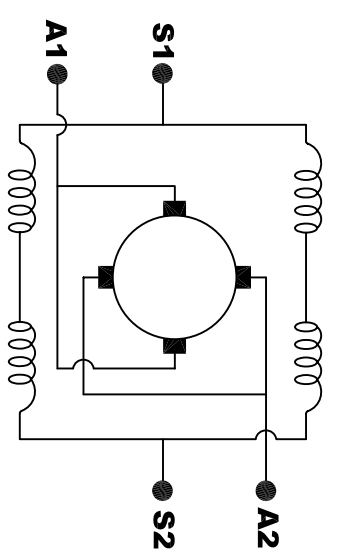
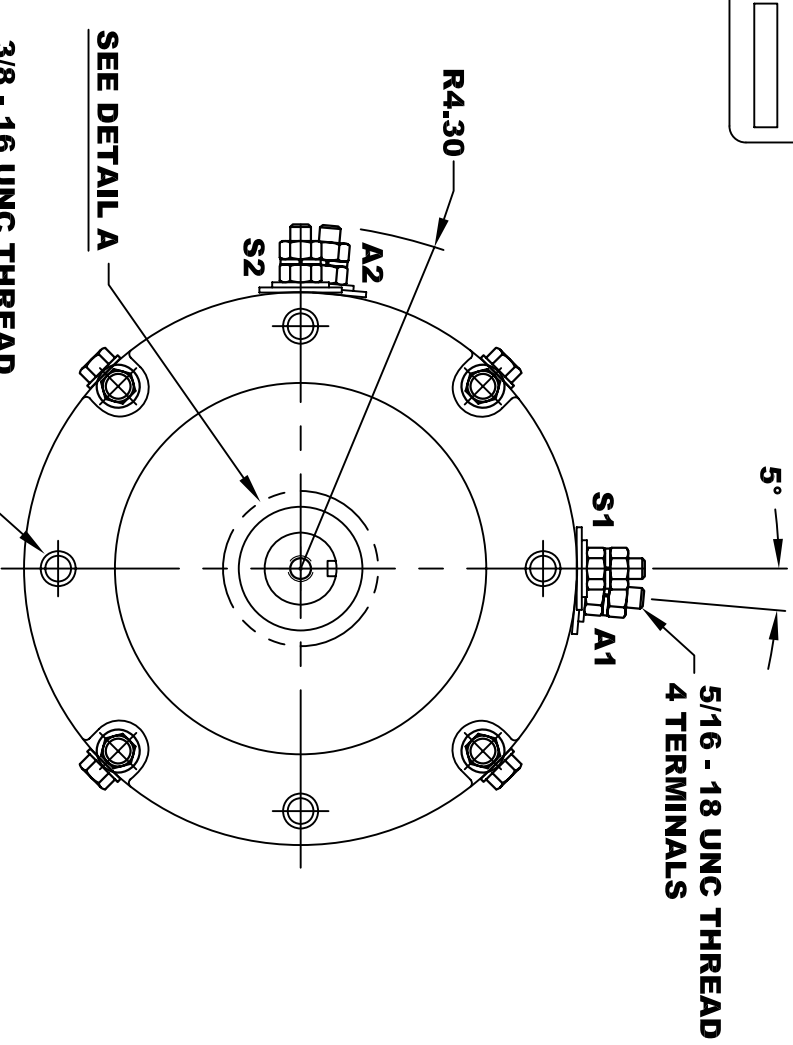
D&D MOTOR SYSTEMS INC.			
SYRACUSE N.Y.			
Model # ES-116-6			
A2	S2	A1	S1
Mfg. Date	Serial #	Rating	Voltage
XXXXXX	XXXX	CLASS H	XX
MADE IN U.S.A.			



MOTOR WIRING CONNE
 CW ROTATION DRIVE EN
 CONNECT S2 & A1 TOGETH
 CONNECT S1 TO BATTERY TER
 CONNECT A2 TO OTHER BATTERY
 CCW ROTATION DRIVE EN
 SWITCH S1 & S2 CONNECTI



3/8 - 16 UNC THREAD
 .65 MINIMUM
 .03-.05 X 45° CHAMFER
 4 PLACES, ON A Ø5.875 B. C.



ELECTRICAL WIRING DIAGRAM

MOTOR WIRING CONNECTIONS:
CW ROTATION DRIVE END
 CONNECT S2 & A1 TOGETHER
 CONNECT S1 TO BATTERY TERMINAL
 CONNECT A2 TO OTHER BATTERY TERMINAL
CCW ROTATION DRIVE END
 SWITCH S1 & S2 CONNECTIONS

THIS PRINT IS THE PROPERTY OF D&D MOTOR SYSTEMS INC.
 DO NOT SCALE
 WORK TO DIMENSIONS
 TOLERANCES UNLESS OTHERWISE SPECIFIED ARE AS FOLLOWS
 .XX _____ .01
 .XXX _____ .005
 .XX ROUGH CASTING _____ .03
 HOLES _____ -.001 / +.006
 ANGLES _____ 0°30"

MOTOR WEIGHT: 62 LBS
CLASS "H" INSULATION
PERFORMANCE SPEC: 6

D & D MOTOR SYSTEMS INC
MOTOR OUTLINE

SIZE	DRAWN DATE	RELEASE DATE	DWG NO. / PART NO.	REV
B	1-14-09		ES-116-6	R1
SCALE	STF	DRAWN BY	MJG	REV DATE
				7-21-09