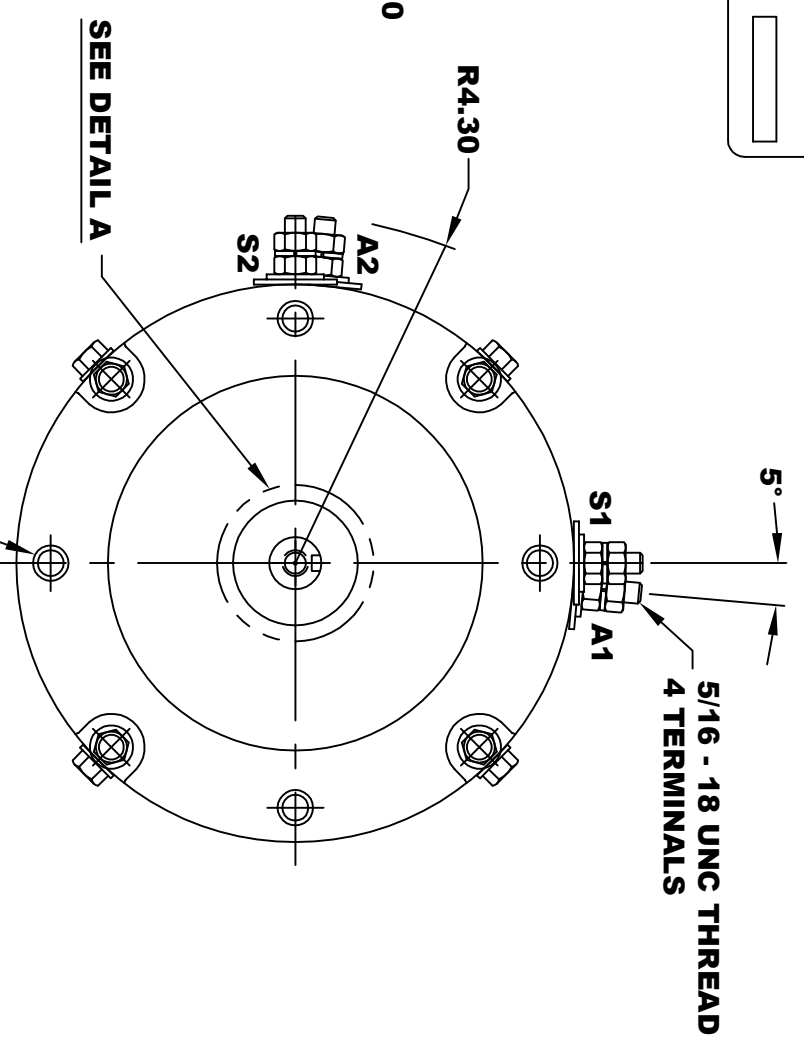
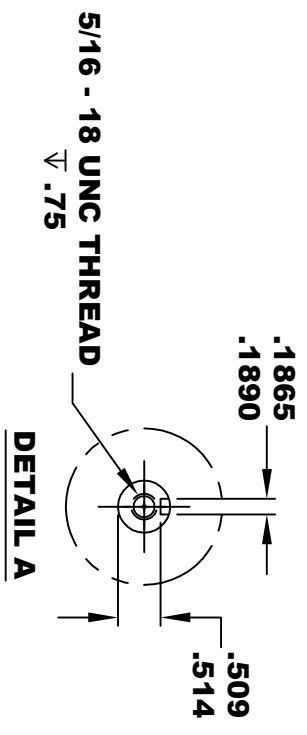
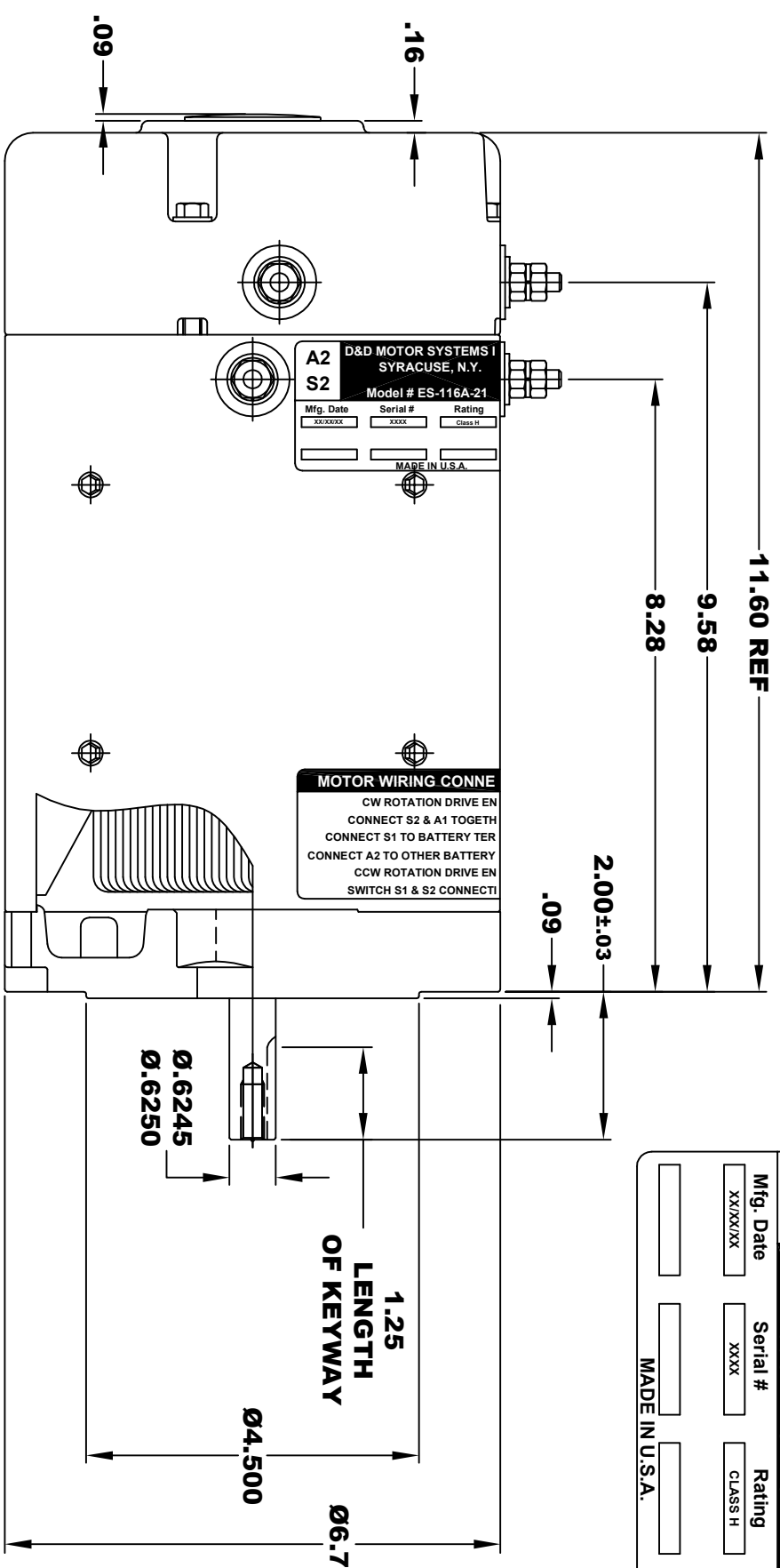


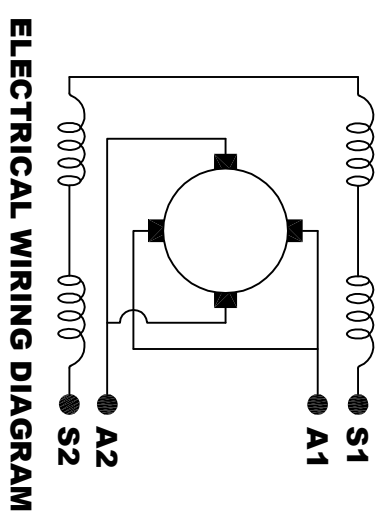
**TORQUE SPECIFICATION FOR  
POWER CABLE SECURING TOP NUTS  
5/16-18 UNC - 110 IN / LBS MAX**

<b>A2</b>		<b>D&amp;D MOTOR SYSTEMS INC.</b>		<b>A1</b>	
<b>S2</b>		<b>SYRACUSE N.Y.</b>		<b>S1</b>	
<b>Model # ES-116A-21</b>					
Mfg. Date	Serial #	Rating	Voltage		
XX/XX/XX	XXXX	CLASS H	24 / 36 / 48	MADE IN U.S.A.	



**3/8 - 16 UNC THREAD  
∇ .65 MINIMUM  
.03-.05 x 45° CHAMFER  
4 PLACES, ON A Ø5.875 B. C.**

**MOTOR WEIGHT: 62 LBS  
CLASS "H" INSULATION  
PERFORMANCE SPEC: 21**



**MOTOR WIRING CONNECTIONS:  
CW ROTATION DRIVE END  
CONNECT S2 & A1 TOGETHER  
CONNECT S1 TO BATTERY TERMINAL  
CONNECT A2 TO OTHER BATTERY TERMINAL  
CCW ROTATION DRIVE END  
SWITCH S1 & S2 CONNECTIONS**

THIS PRINT IS THE PROPERTY OF D&D MOTOR SYSTEMS INC.  
DO NOT SCALE  
WORK TO DIMENSIONS  
TOLERANCES UNLESS OTHERWISE SPECIFIED ARE AS FOLLOWS

.XX	.01
.XXX	.005
.XX ROUGH CASTING	.03
HOLES	-.001 / +.006
ANGLES	0.30°

<b>D &amp; D MOTOR SYSTEMS INC</b>			
<b>MOTOR OUTLINE</b>			
SIZE	DRAWN DATE	RELEASE DATE	DWG NO. / PART NO.
B	9-2-09		ES-116A-21
SCALE	DRAWN BY	REV DATE	REV
STF	MJG		