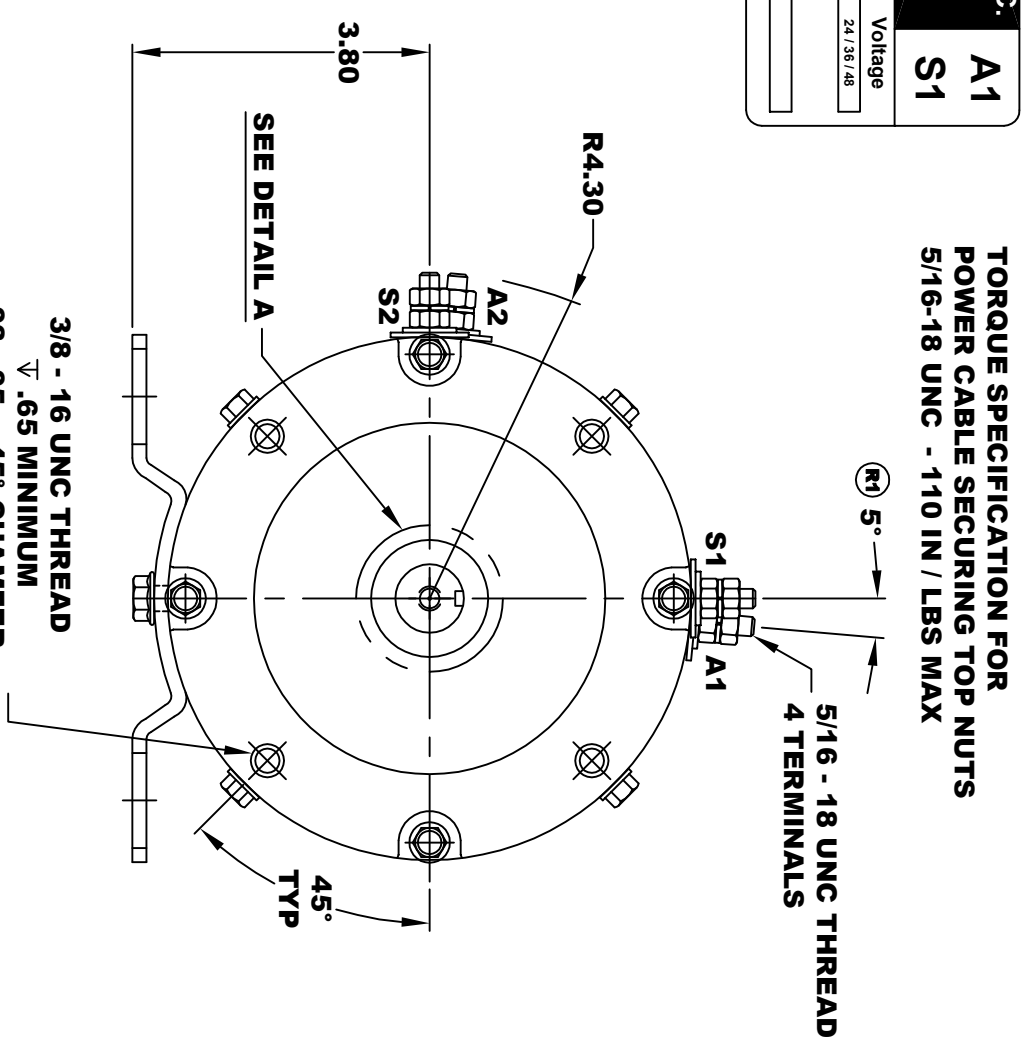
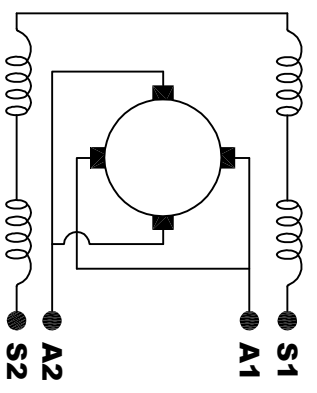


A2	D&D MOTOR SYSTEMS INC.			A1
S2	SYRACUSE N.Y.			S1
Model # ES-116B-21				
Mfg. Date	Serial #	Rating	Voltage	
XX/XX/XX	XXXX	CLASS H	24 / 36 / 48	
MADE IN U.S.A.				



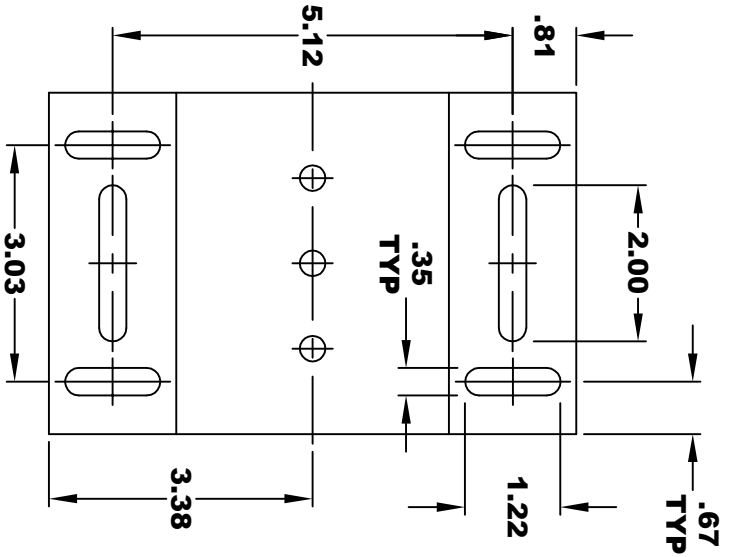
5/16 x 18 UNC THREAD
 √ .75
DETAIL A



ELECTRICAL WIRING DIAGRAM

MOTOR WIRING CONNECTIONS:
CW ROTATION DRIVE END
CONNECT S2 & A1 TOGETHER
CONNECT S1 TO BATTERY TERMINAL
CONNECT A2 TO OTHER BATTERY TERMINAL
CCW ROTATION DRIVE END
SWITCH S1 & S2 CONNECTIONS

3/8 - 16 UNC THREAD
 √ .65 MINIMUM
 .03 -.05 x 45° CHAMFER
 4 PLACES, ON A Ø5.875 B. C.



MOTOR WEIGHT: 62 LBS
CLASS "H" INSULATION
PERFORMANCE SPEC: 21

THIS PRINT IS THE PROPERTY OF D&D MOTOR SYSTEMS INC.
 DO NOT SCALE
 WORK TO DIMENSIONS
 TOLERANCES UNLESS OTHERWISE SPECIFIED ARE AS FOLLOWS

XX	.01
XXX	.005
.XX ROUGH CASTING	.03
HOLES	.001 / +.006
ANGLES	0.30"

D & D MOTOR SYSTEMS INC

MOTOR OUTLINE

SIZE	DRAWN DATE	RELEASE DATE	DWG NO. / PART NO.	REV
B	3-8-13		ES-116B-21	R1
SCALE	STF	DRAWN BY	MJG	REV DATE
				11-23-20