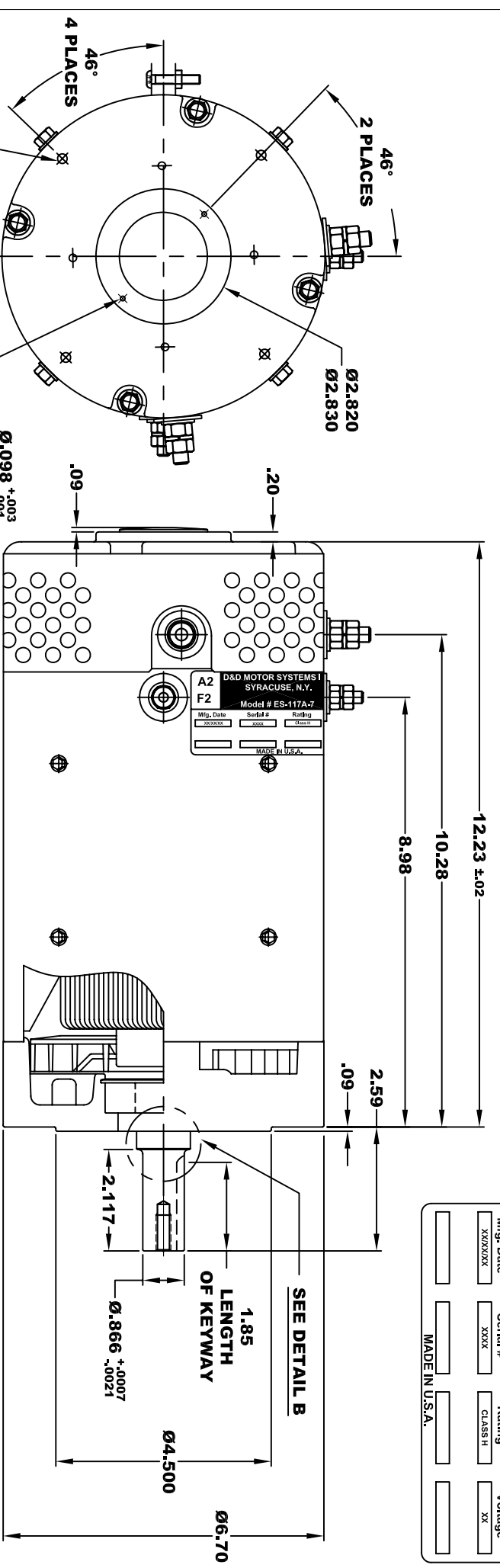
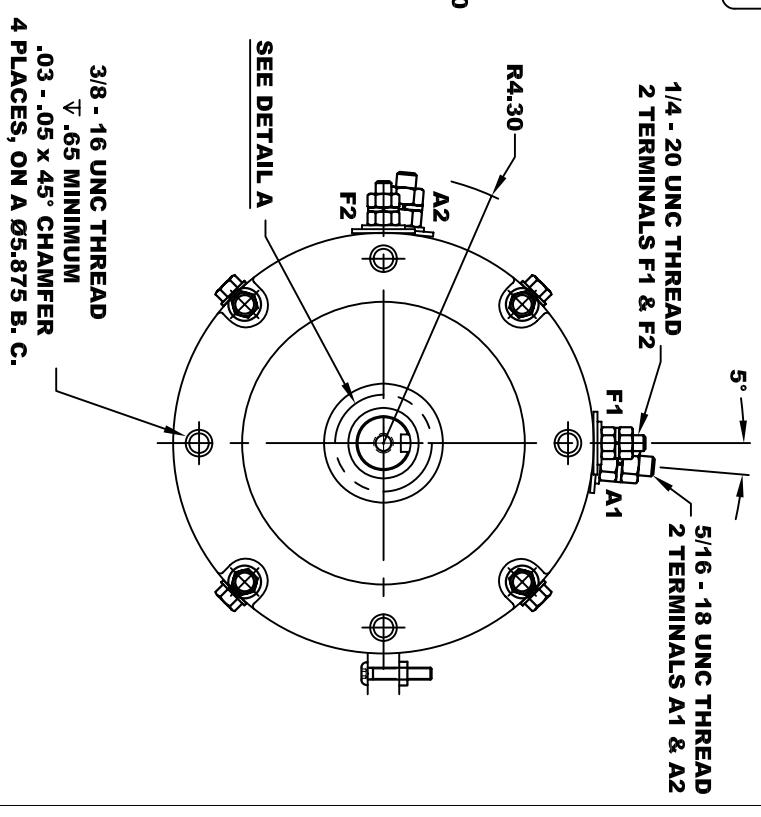
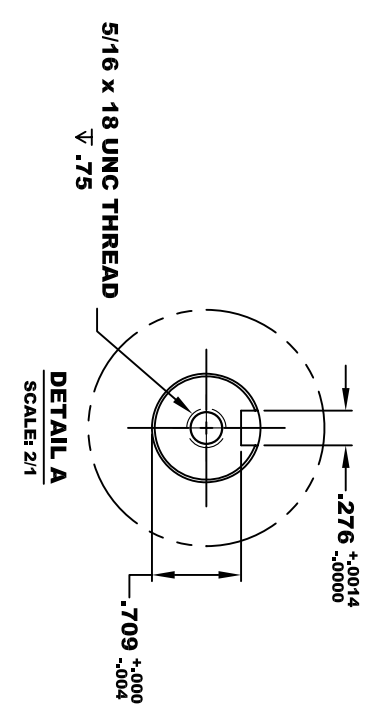
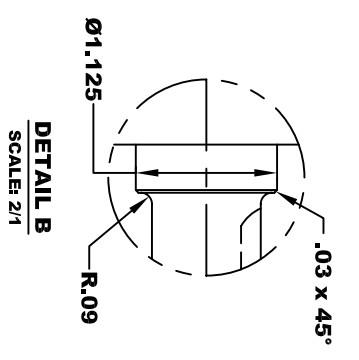


**TORQUE SPECIFICATION FOR
POWER CABLE SECURING TOP NUTS**
5/16-18 UNC (A1 / A2) - 110 IN / LBS MAX
1/4-20 UNC (F1 / F2) - 50 IN / LBS MAX

D&D MOTOR SYSTEMS INC.		A1	
SYRACUSE N.Y.		F1	
Model # ES-117A-7			
Mfg. Date	Serial #	Rating	Voltage
XXXXXX	XXXX	CLASS II	XX
MADE IN U.S.A.			



46°
2 PLACES
Ø2.820
Ø2.830
46°
4 PLACES
1/4-20 UNC THREAD
TAPPED THRU
EQUALLY SPACED
ON A Ø5.875 B.C.
4 PLACES
2 HOLES
Ø.098 ^{+.003}_{-.001}
V .30 ^{-.35}
EQUALLY SPACED
ON A 2.45 B.C.



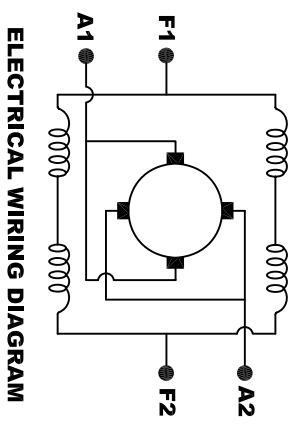
MOTOR WEIGHT: 62 LBS
CLASS "H" INSULATION
PERFORMANCE SPEC: 7

D & D MOTOR SYSTEMS INC

MOTOR OUTLINE

SIZE	DRAWN DATE	RELEASE DATE	DWG NO. / PART NO.	REV
B	8-22-07		ES-117A-7 DRAFT	
SCALE	STF	DRAWN BY	MJG	REV DATE

MOTOR WIRING CONNECTIONS:
CW ROTATION DRIVE END
CONNECT A1 & F1 TO ONE BATTERY TERMINAL.
CCW ROTATION DRIVE END
CONNECT A2 & F2 TO OTHER BATTERY TERMINAL
SWITCH F1 & F2 CONNECTIONS



DRAFT

THIS PRINT IS THE PROPERTY OF D&D MOTOR SYSTEMS INC.
DO NOT SCALE
WORK TO DIMENSIONS
TOLERANCES UNLESS OTHERWISE SPECIFIED ARE AS FOLLOWS
.XX _____ .01
.XXX _____ .005
.XX ROUGH CASTING _____ .03
HOLES _____ -.001 / +.006
ANGLES _____ 0°30"