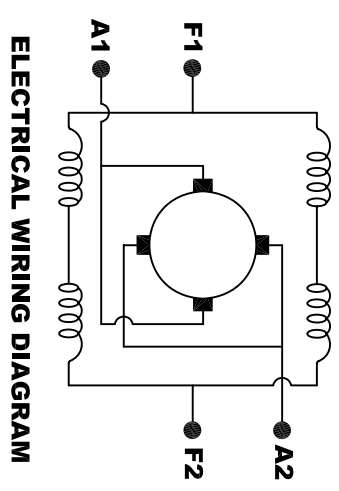
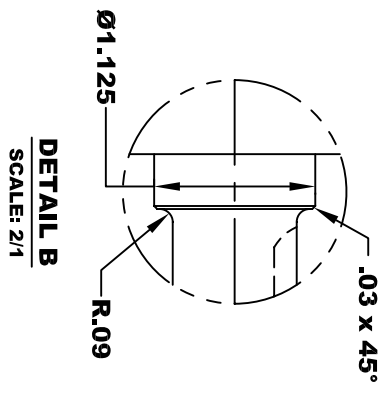
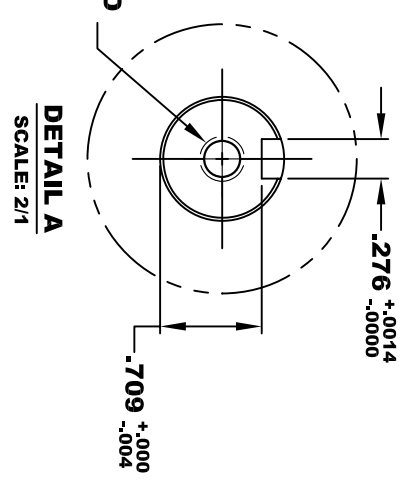
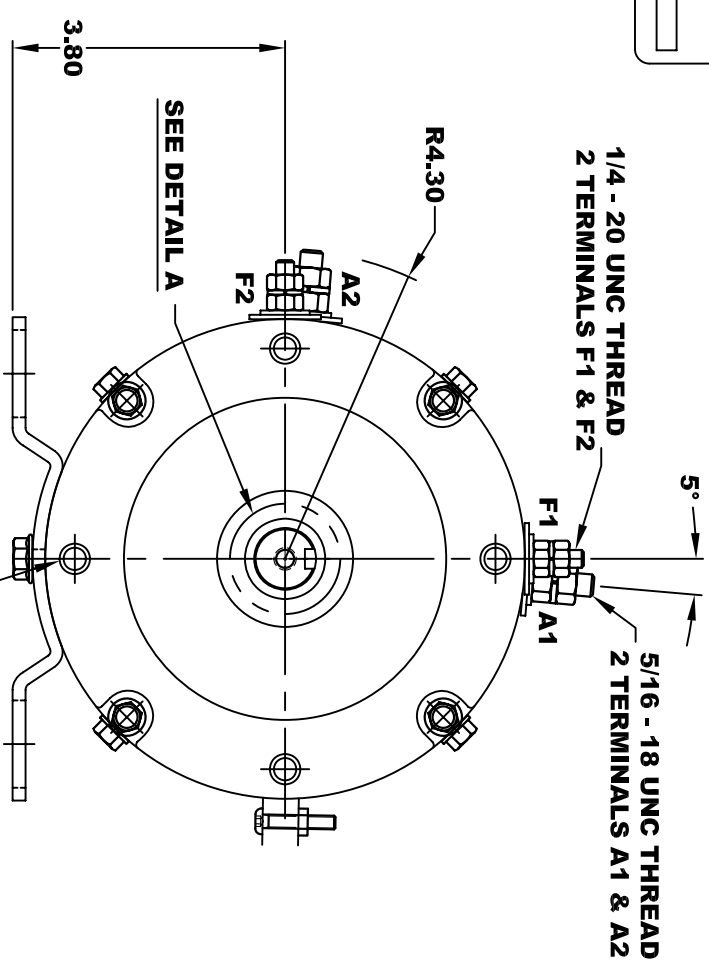
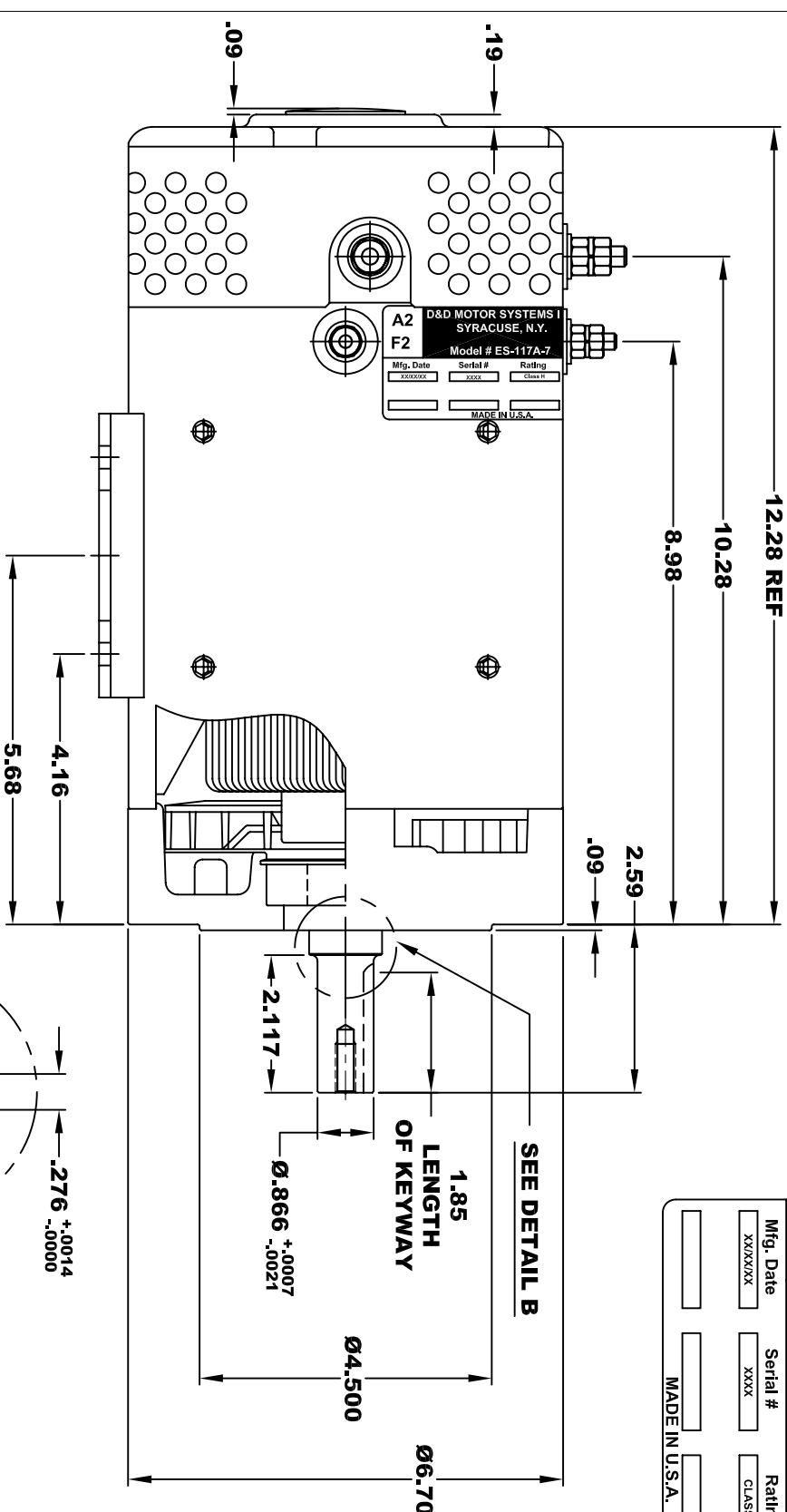


| | | | | |
|--------------------------|-----------------------------------|---------|---------|-----------|
| A2 | D&D MOTOR SYSTEMS INC. | | | A1 |
| F2 | SYRACUSE N.Y. | | | F1 |
| Model # ES-117A-7 | | | | |
| Mfg. Date | Serial # | Rating | Voltage | |
| XX/XX/XX | XXXX | CLASS H | XX | |
| MADE IN U.S.A. | | | | |

**TORQUE SPECIFICATION FOR
POWER CABLE SECURING TOP NUTS**
 5/16-18 UNC (A1 / A2) - 110 IN / LBS MAX
 1/4-20 UNC (F1 / F2) - 50 IN / LBS MAX



MOTOR WIRING CONNECTIONS:
 CW ROTATION DRIVE END
 CONNECT A1 & F1 TO ONE BATTERY TERMINAL
 CONNECT A2 & F2 TO OTHER BATTERY TERMINAL
 CCW ROTATION DRIVE END
 SWITCH F1 & F2 CONNECTIONS

3/8 - 16 UNC THREAD
 ∇ .65 MINIMUM
 .03 -.05 x 45° CHAMFER
 4 PLACES, ON A Ø5.875 B. C.

MOTOR WEIGHT: 62 LBS
CLASS "H" INSULATION
PERFORMANCE SPEC: 7

THIS PRINT IS THE PROPERTY OF D&D MOTOR SYSTEMS INC.
 DO NOT SCALE
 WORK TO DIMENSIONS
 TOLERANCES UNLESS OTHERWISE SPECIFIED ARE AS FOLLOWS

.XXX _____ .005
 .XX _____ .01
 .XX ROUGH CASTING _____ .03
 HOLES _____ -.001 / +.006
 ANGLES _____ 0°30"

| | | | |
|------------------------------------|------------|--------------------|-----|
| D & D MOTOR SYSTEMS INC | | | |
| MOTOR OUTLINE | | | |
| SIZE | DRAWN DATE | RELEASE DATE | REV |
| B | 7-24-07 | | |
| SCALE | DRAWN BY | DWG NO. / PART NO. | REV |
| STF | MJG | ES-117A-7 | |