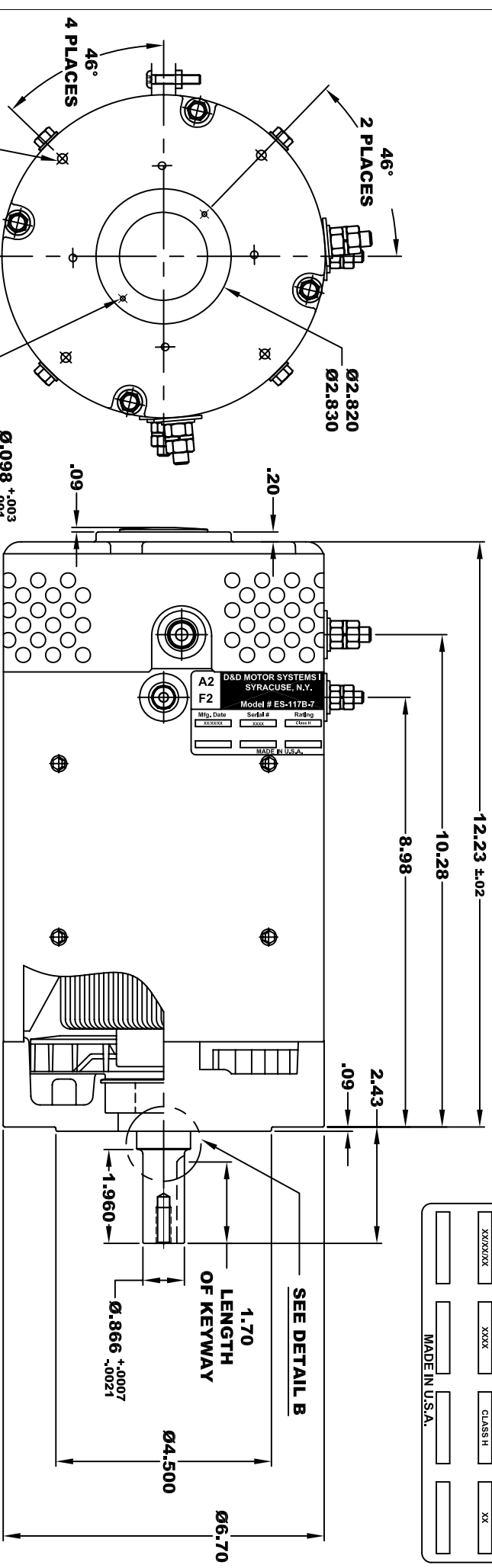
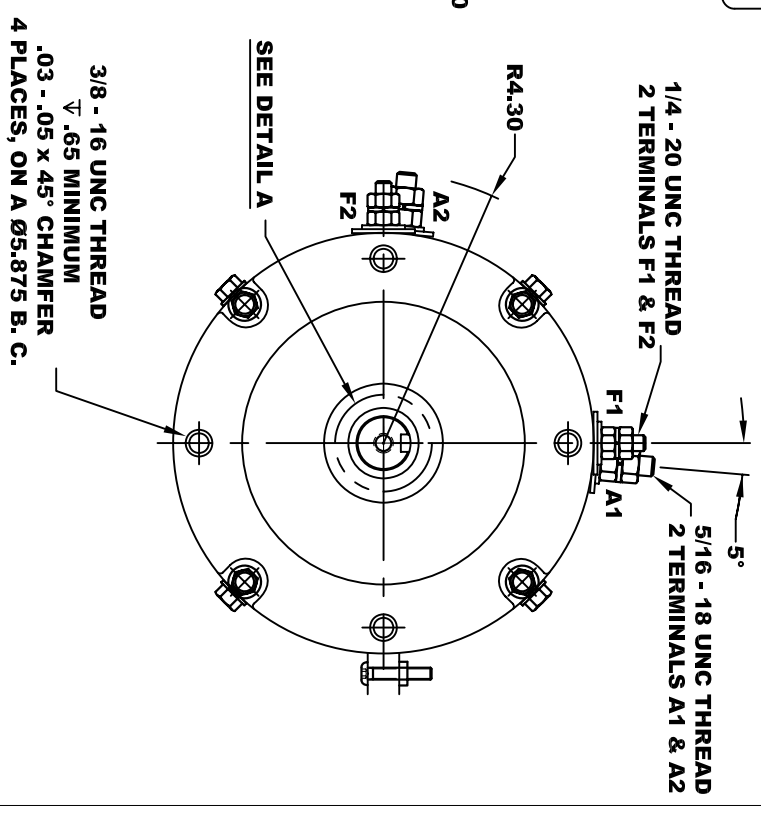
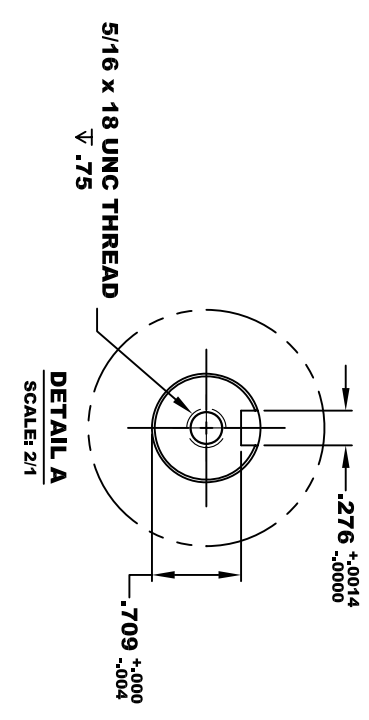
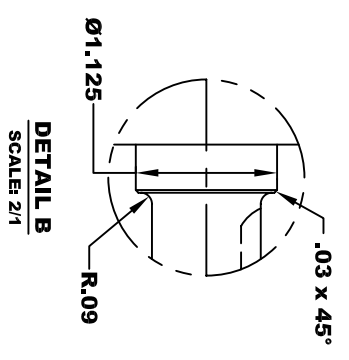


<b>D&amp;D MOTOR SYSTEMS INC.</b>			
SYRACUSE N.Y.			
<b>A2</b>	<b>Model # ES-117B-7</b>		<b>A1</b>
<b>F2</b>	Mfg. Date	Serial #	Rating
	XXXXXX	XXXX	CLASS II
			Voltage
			XX
			MADE IN U.S.A.

**TORQUE SPECIFICATION FOR  
POWER CABLE SECURING TOP NUTS**  
5/16-18 UNC (A1 / A2) - 110 IN / LBS MAX  
1/4-20 UNC (F1 / F2) - 50 IN / LBS MAX



46°  
2 PLACES  
Ø2.820  
46°  
4 PLACES  
1/4-20 UNC THREAD  
TAPPED THRU  
EQUALLY SPACED  
ON A Ø5.875 B.C.  
4 PLACES  
Ø.098<sup>+0.003</sup>  
-.001  
V .35<sup>-.040</sup>  
2 HOLES  
EQUALLY SPACED  
ON A 2.45 B.C.



3/8 - 16 UNC THREAD  
V .65 MINIMUM  
.03 - .05 x 45° CHAMFER  
4 PLACES, ON A Ø5.875 B.C.

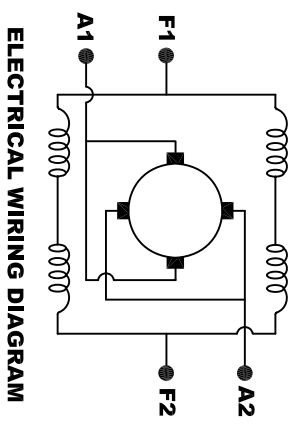
**MOTOR WEIGHT: 62 LBS**  
**CLASS "H" INSULATION**  
**PERFORMANCE SPEC: 7**

**D & D MOTOR SYSTEMS INC**

**MOTOR OUTLINE**

SIZE	DRAWN DATE	RELEASE DATE	DWG NO. / PART NO.	REV
B	9-4-08		ES-117B-7	
SCALE	STF	DRAWN BY	MJG	REV DATE

THIS PRINT IS THE PROPERTY OF D&D MOTOR SYSTEMS INC.  
DO NOT SCALE  
WORK TO DIMENSIONS  
TOLERANCES UNLESS OTHERWISE SPECIFIED ARE AS FOLLOWS  
.XX \_\_\_\_\_ .01  
.XXX \_\_\_\_\_ .005  
.XX ROUGH CASTING \_\_\_\_\_ .03  
HOLES \_\_\_\_\_ -.001 / +.006  
ANGLES \_\_\_\_\_ 0°30"



**MOTOR WIRING CONNECTIONS:**  
**CW ROTATION DRIVE END**  
CONNECT A1 & F1 TO ONE BATTERY TERMINAL.  
**CCW ROTATION DRIVE END**  
CONNECT A2 & F2 TO OTHER BATTERY TERMINAL  
SWITCH F1 & F2 CONNECTIONS