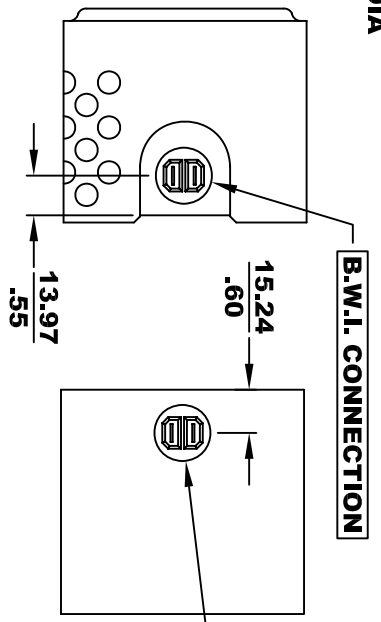
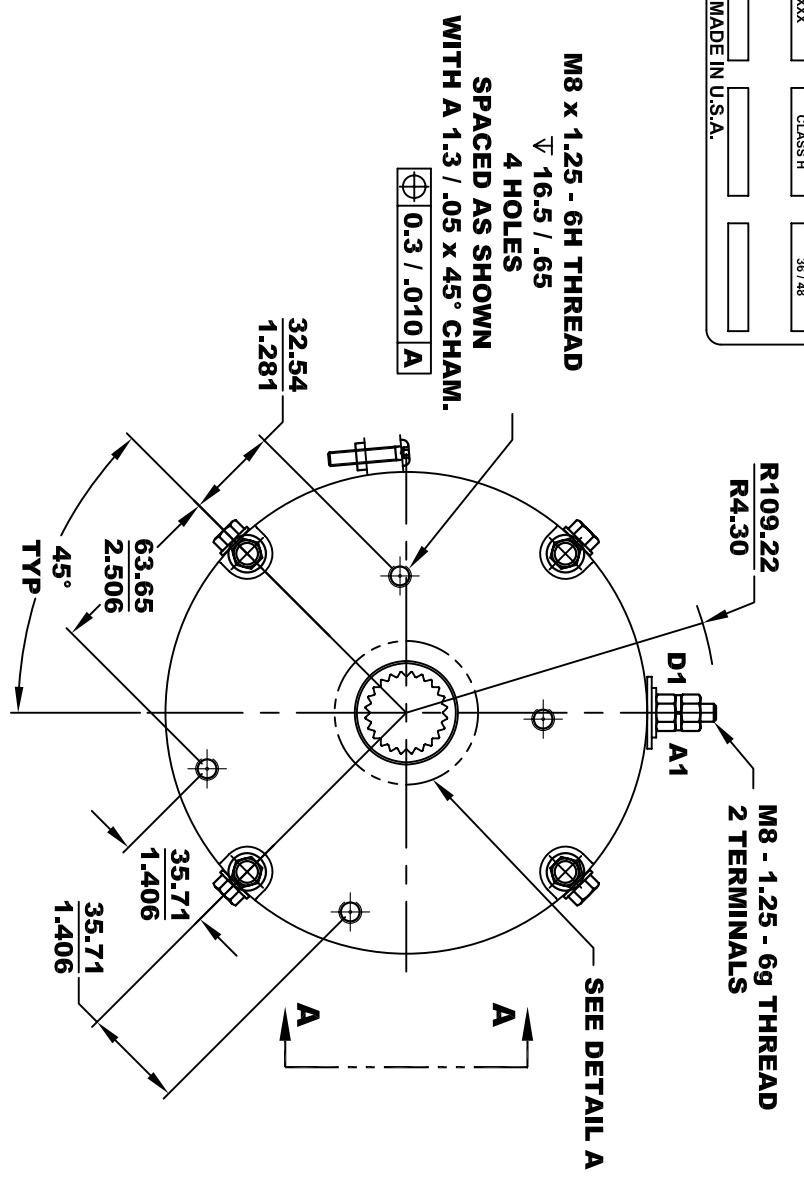


DETAIL A
 24 STRAIGHT SIDED SPLINES
 TO BS - 2059 - 1953

MOTOR WIRING CONNECTIONS:
 CCW ROTATION DRIVE END
 CONNECT ONE POWER CABLE TO TERMINAL A1
 CONNECT THE OTHER POWER CABLE TO TERMINAL D1

D&D MOTOR SYSTEMS INC.			
SYRACUSE N.Y.			
Model # ES-119-XX			
Mfg. Date	Serial #	Rating	Voltage
XXXXXX	XXXX	CLASS H	36 / 48
MADE IN U.S.A.			

**TORQUE SPECIFICATION FOR
 POWER CABLE SECURING TOP NUTS**
 M8 - 1.25 - 6g - 12 N-m MAX



THERMAL PROTECTOR ELECTRICAL SPECIFICATION:
 MAX. DC OPERATING VOLTAGE: 60 VOLTS
 140° C NORMALLY OPEN SWITCH

TERMINAL BUSHING
 1/4" SPADE CONNECTIONS
 2 PLACES

MOTOR WEIGHT: XX LBS
 CLASS "H" INSULATION
 PERFORMANCE SPEC: 62

THIS PRINT IS THE PROPERTY OF D&D MOTOR SYSTEMS INC.
 DO NOT SCALE
 WORK TO DIMENSIONS
 TOLERANCES UNLESS OTHERWISE SPECIFIED ARE AS FOLLOWS

.XXX _____ .005
 .XX _____ .01
 .XX ROUGH CASTING _____ .03
 HOLES _____ -.001 / +.006
 ANGLES _____ 0°30"

D & D MOTOR SYSTEMS INC			
MOTOR OUTLINE			
SIZE	DRAWN DATE	RELEASE DATE	DWG NO. / PART NO.
B	7-11-05		ES-119-62
SCALE	STF	DRAWN BY	MJG
			REV DATE