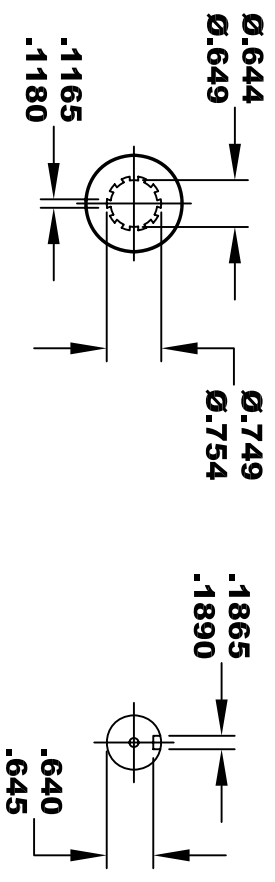
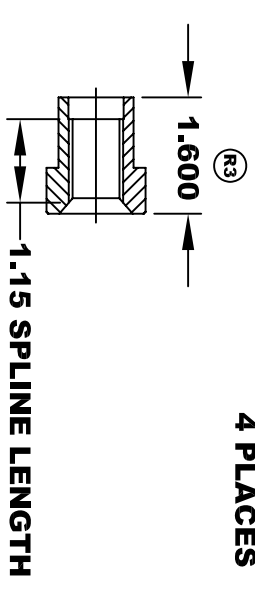
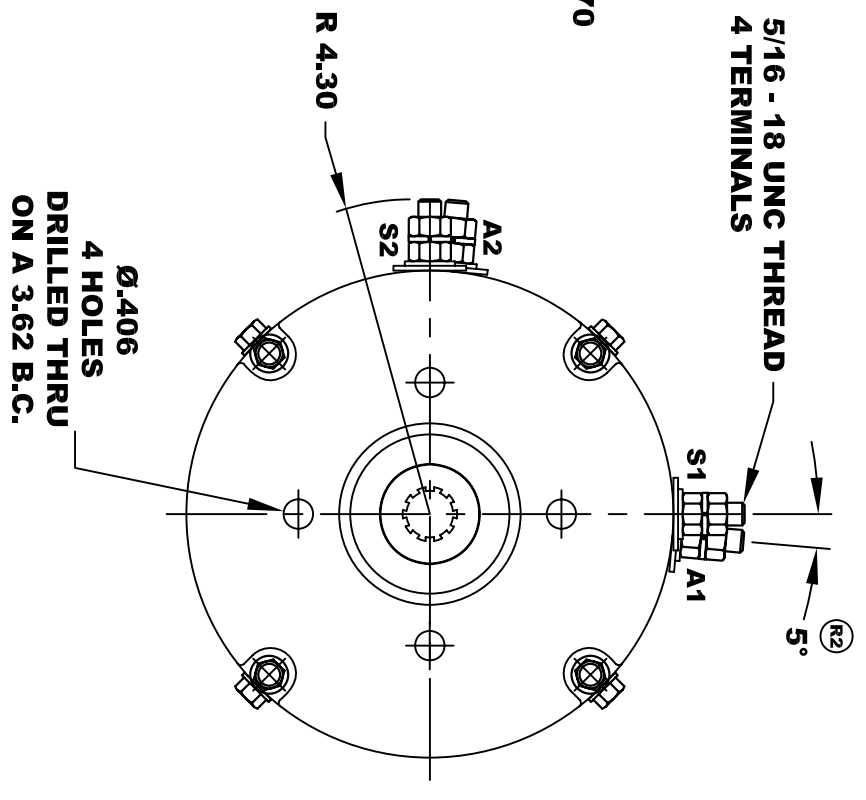
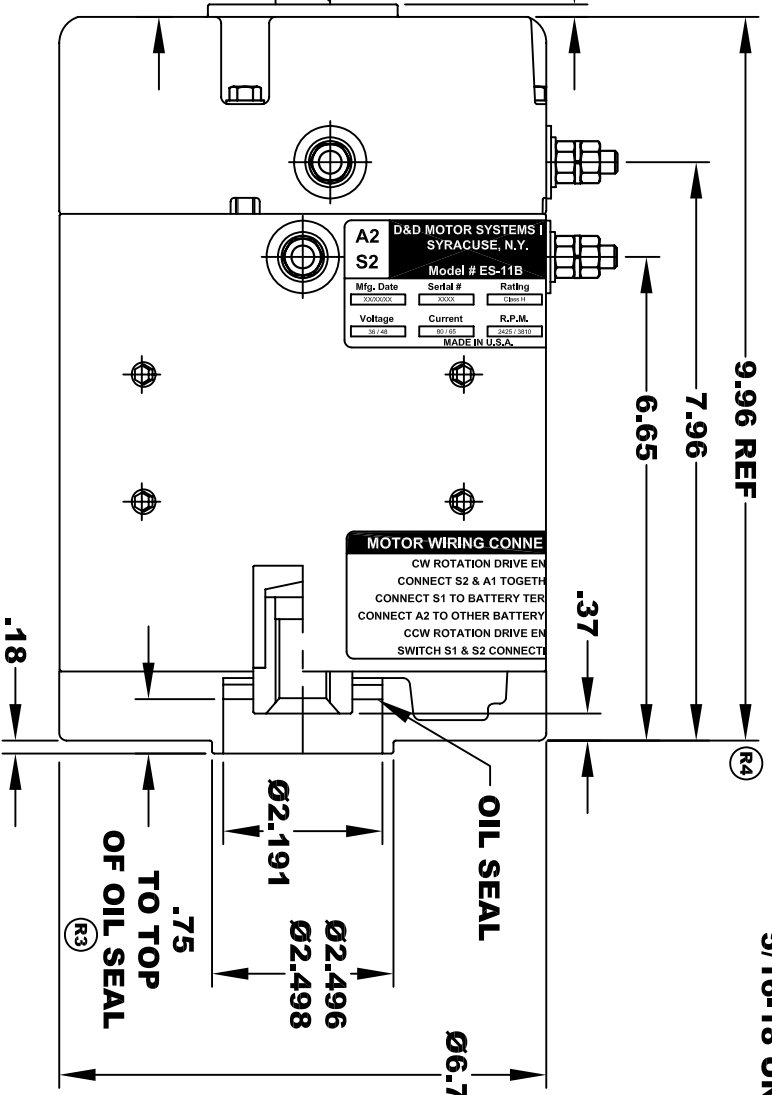
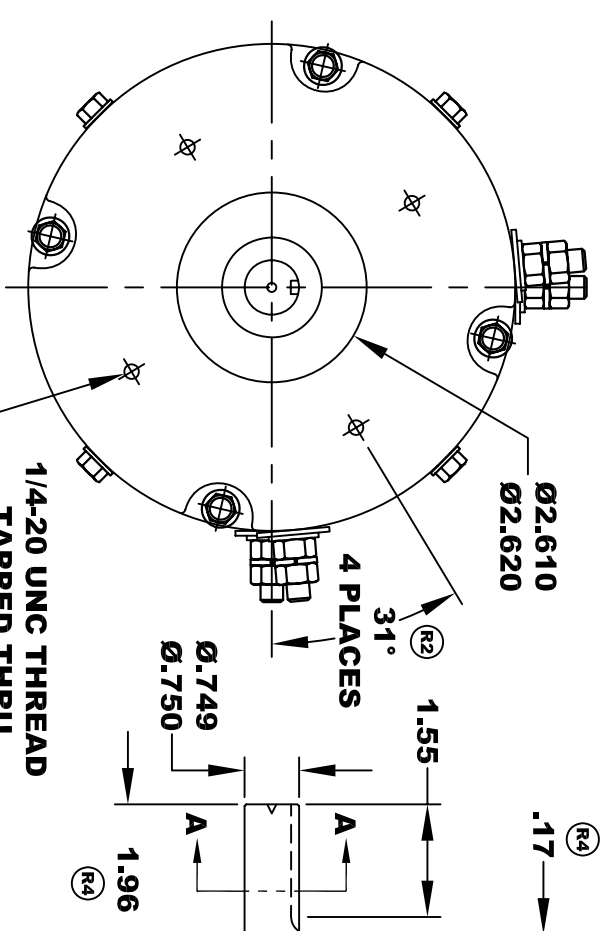


A2 D&D MOTOR SYSTEMS INC.
SYRACUSE N.Y.

A1 S1

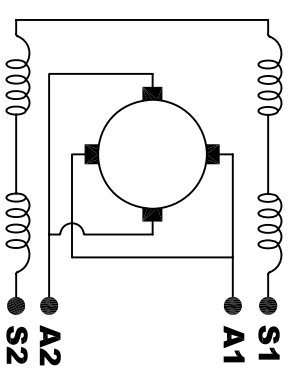
Model # ES-11B

Mfg. Date	Serial #	Rating	Duty
XXXX/XX	XXXX	Class H	S2-40 MIN
Voltage	Current	R.P.M.	H.P.
36 / 48	80 / 65	2425 / 3810	2.95 / 3.25
MADE IN U.S.A.			



10 TOOTH
INTERNAL SPLINE
HARDNESS OF SPLINE
TO BE R/C 46 - 53 (.02 DEPTH MIN)

SECTION A-A



ELECTRICAL WIRING DIAGRAM

MOTOR WIRING CONNECTIONS:
CW ROTATION DRIVE END
 CONNECT S2 & A1 TOGETHER
 CONNECT S1 TO BATTERY TERMINAL
 CONNECT A2 TO OTHER BATTERY TERMINAL
CCW ROTATION DRIVE END
 SWITCH S1 & S2 CONNECTIONS

MOTOR WEIGHT 48 LBS
CLASS "H" INSULATION
PERFORMANCE SPEC: 1

**TORQUE SPECIFICATION FOR
 POWER CABLE SECURING TOP NUTS**
5/16-18 UNC - 110 IN / LBS MAX

MOTOR WIRING CONNE
 CW ROTATION DRIVE EN
 CONNECT S2 & A1 TOGETH
 CONNECT S1 TO BATTERY TER
 CONNECT A2 TO OTHER BATTERY
 CCW ROTATION DRIVE EN
 SWITCH S1 & S2 CONNECT

THIS PRINT IS THE PROPERTY OF D&D MOTOR SYSTEMS INC.
 DO NOT SCALE
 WORK TO DIMENSIONS
 TOLERANCES UNLESS OTHERWISE SPECIFIED ARE AS FOLLOWS
 .XX _____ .01
 .XXX _____ .005
 .XX ROUGH CASTING _____ .03
 HOLES _____ -.001 / +.006
 ANGLES _____ 0°30"

D & D MOTOR SYSTEMS INC
MOTOR OUTLINE

SIZE	DRAWN DATE	RELEASE DATE	DWG NO. / PART NO.	REV
B	4-24-02		ES-11B	R4
SCALE	STF	DRAWN BY	MJG	REV DATE
				7-30-08