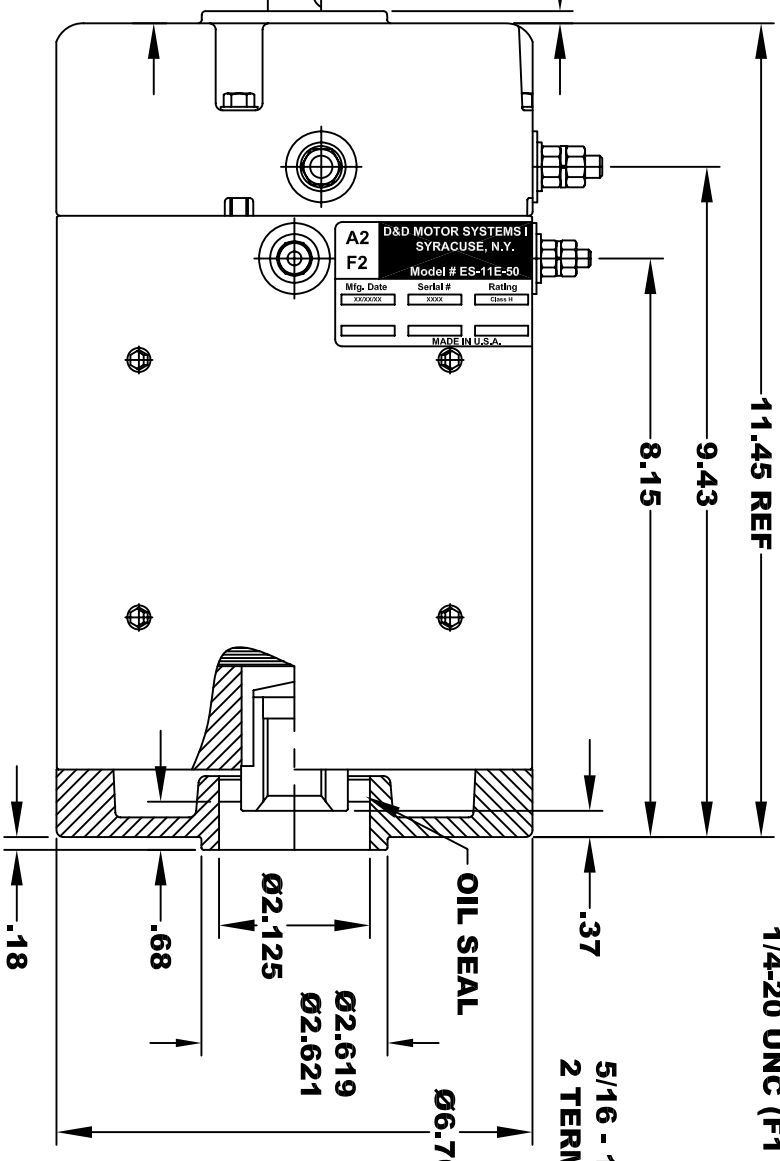
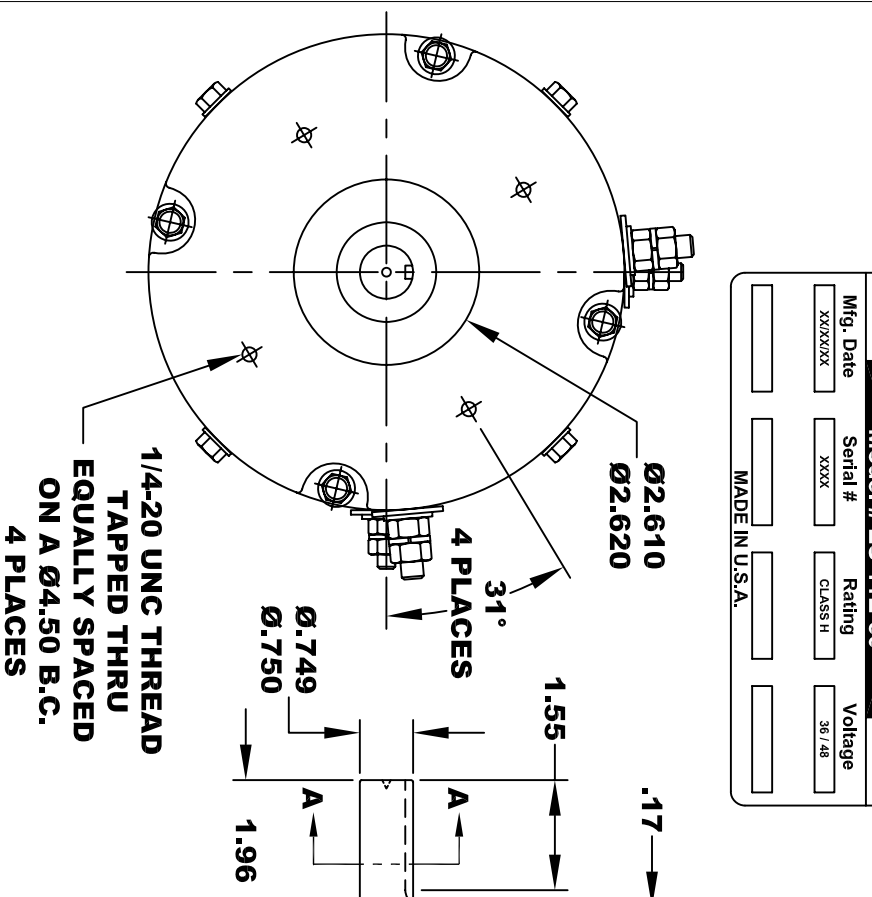
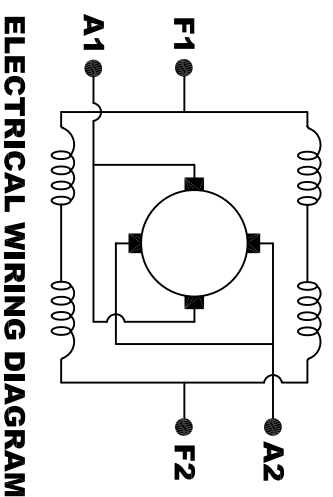
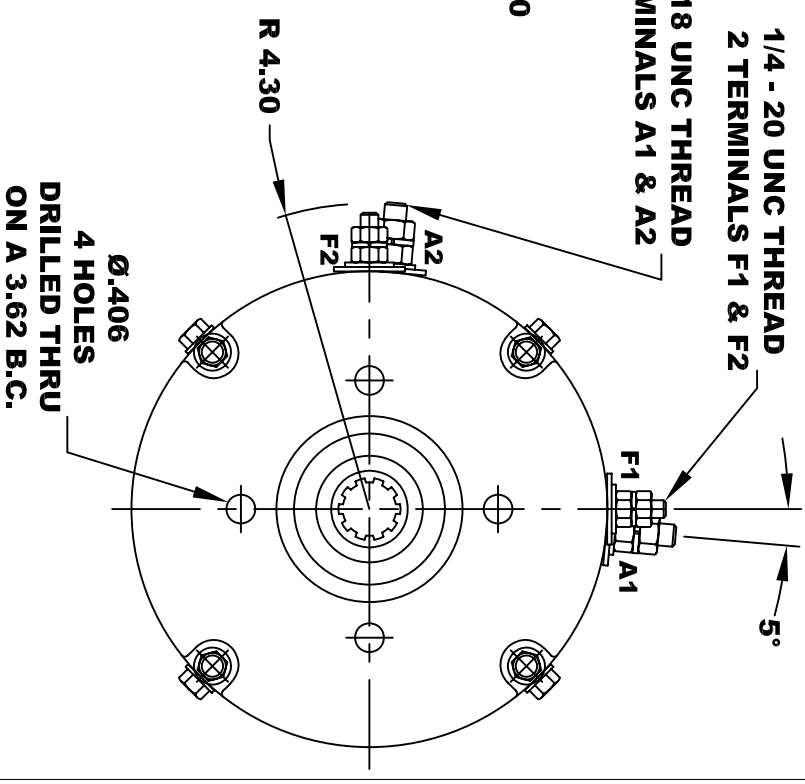


<b>D&amp;D MOTOR SYSTEMS INC.</b>			
<b>A2</b>		<b>A1</b>	
<b>SYRACUSE N.Y.</b>			
<b>Model # ES-11E-50</b>			
Mfg. Date	Serial #	Rating	Voltage
XXXXXX	XXXX	CLASS H	30 / 48
MADE IN U.S.A.			

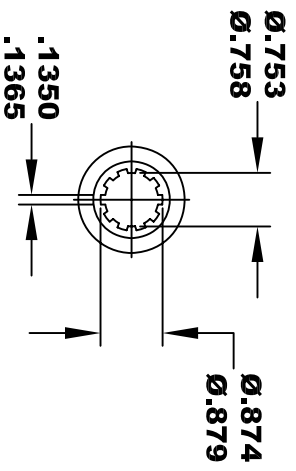


**TORQUE SPECIFICATION FOR POWER CABLE SECURING TOP NUTS**  
**5/16-18 UNC (A1 / A2) - 110 IN / LBS MAX**  
**1/4-20 UNC (F1 / F2) - 50 IN / LBS MAX**

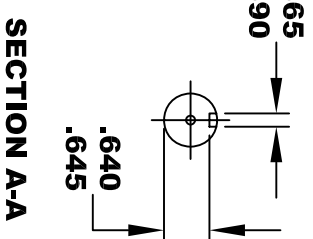


**MOTOR WIRING CONNECTIONS:**  
**CW ROTATION DRIVE END**  
**CONNECT A1 & F1 TO ONE BATTERY TERMINAL**  
**CONNECT A2 & F2 TO OTHER BATTERY TERMINAL**  
**CCW ROTATION DRIVE END**  
**SWITCH F1 & F2 CONNECTIONS**

**MOTOR WEIGHT: 57 LBS**  
**CLASS "H" INSULATION**  
**PERFORMANCE SPEC: 50**



**INTERNAL SPLINE**  
**HARDNESS OF SPLINE**  
**TO BE R/C 46 - 53 (.02 DEPTH MIN)**



THIS PRINT IS THE PROPERTY OF D&D MOTOR SYSTEMS INC.  
DO NOT SCALE  
WORK TO DIMENSIONS  
TOLERANCES UNLESS OTHERWISE SPECIFIED ARE AS FOLLOWS

.XX \_\_\_\_\_ .01  
.XXX \_\_\_\_\_ .005  
.XX ROUGH CASTING \_\_\_\_\_ .03  
HOLES \_\_\_\_\_ -.001 / +.006  
ANGLES \_\_\_\_\_ 0°30"

**D & D MOTOR SYSTEMS INC**

**MOTOR OUTLINE**

SIZE	DRAWN DATE	RELEASE DATE	DWG NO. / PART NO.	REV
B	1-23-13		ES-11E-50	
SCALE	STF	DRAWN BY	MJG	REV DATE