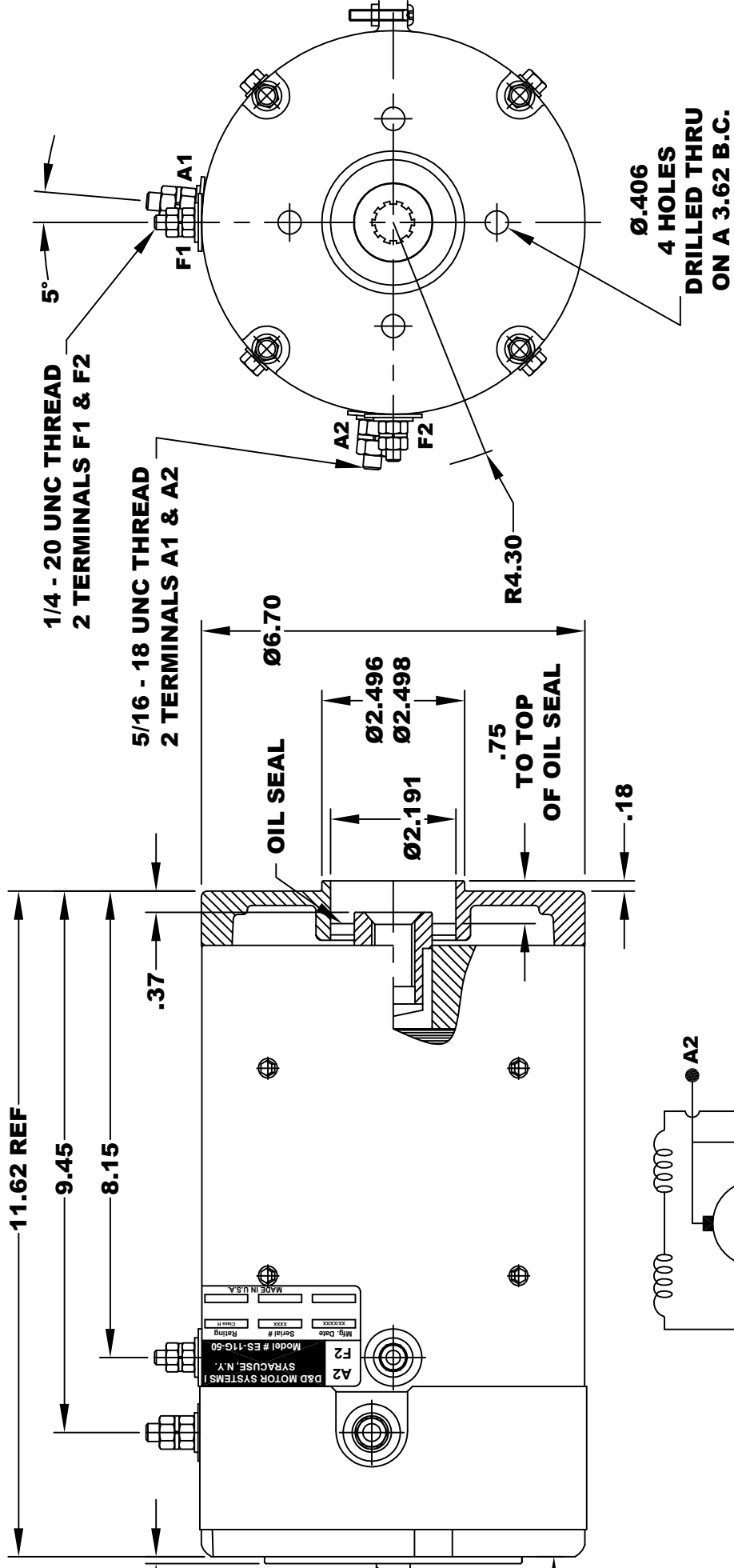
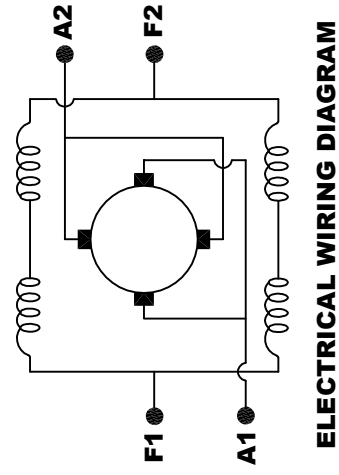


D&D MOTOR SYSTEMS INC. SYRACUSE N.Y.		A1	F1
A2	F2	Model # ES-11G-50	
Mfg. Date	Serial #	Rating	Voltage
XXXXXX	XXXX	CLASS-H	36/48
MADE IN U.S.A.			

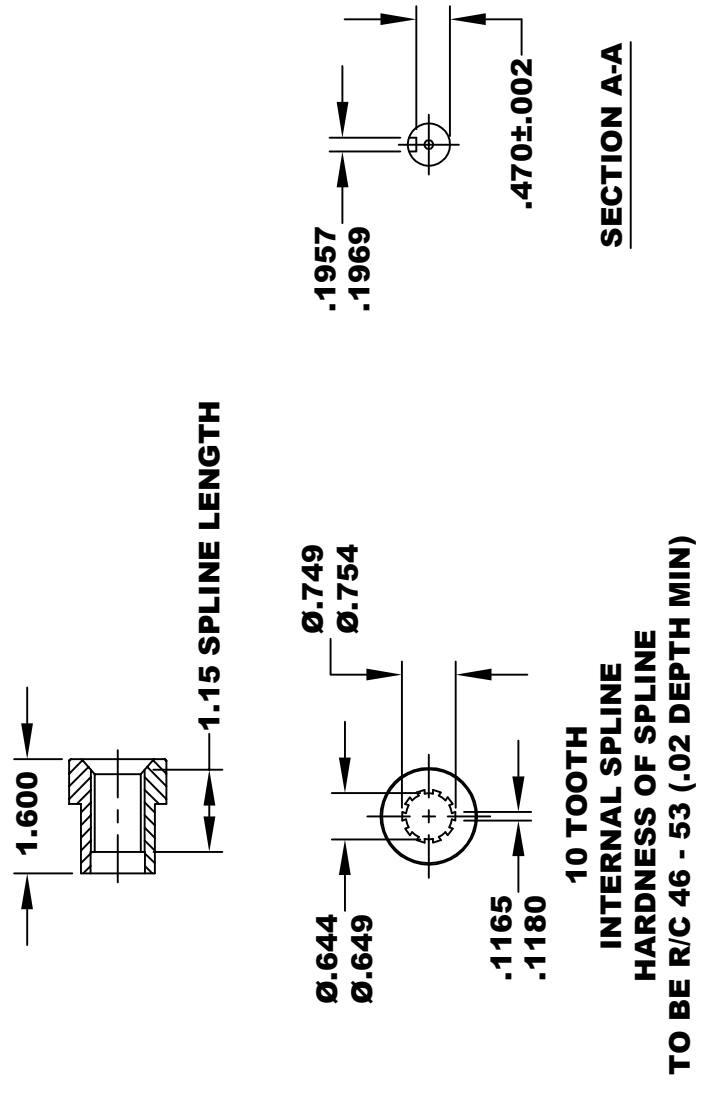
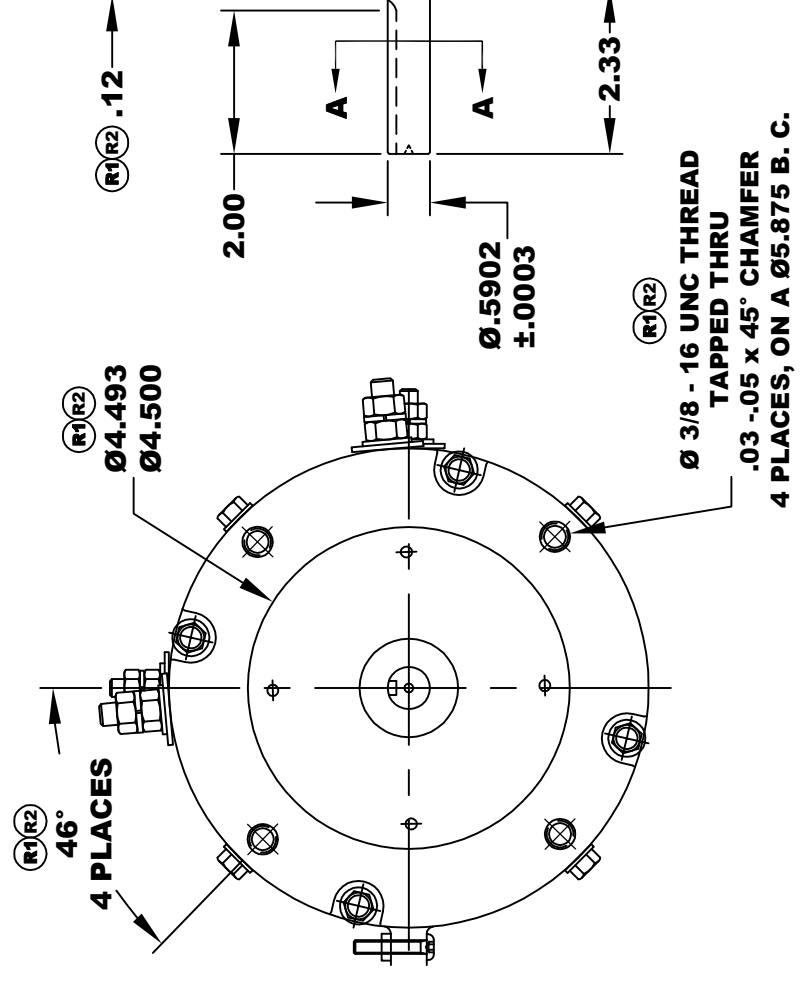
**TORQUE SPECIFICATION FOR
POWER CABLE SECURING TOP NUTS**
 5/16-18 UNC (A1 / A2) - 110 IN / LBS MAX
 1/4-20 UNC (F1 / F2) - 50 IN / LBS MAX



MOTOR WIRING CONNECTIONS:
 CW ROTATION DRIVE END
 CONNECT A1 & F1 TO ONE BATTERY TERMINAL
 CONNECT A2 & F2 TO OTHER BATTERY TERMINAL
 CCW ROTATION DRIVE END
 SWITCH F1 & F2 CONNECTIONS



**MOTOR WEIGHT: 61 LBS
 CLASS "H" INSULATION
 PERFORMANCE SPEC: 50**



THIS PRINT IS THE PROPERTY OF D&D MOTOR SYSTEMS INC.
 DO NOT SCALE
 WORK TO DIMENSIONS
 TOLERANCES UNLESS OTHERWISE SPECIFIED ARE AS FOLLOWS
 .XX _____ .01
 .XXX _____ .005
 .XX ROUGH CASTING _____ .03
 HOLES _____ .001 / +.006
 ANGLES _____ 0°30"

D & D MOTOR SYSTEMS INC			
MOTOR OUTLINE			
SIZE	DRAWN DATE	RELEASE DATE	DWG NO. / PART NO.
B	7-21-17		ES-11G-50
SCALE	STF	DRAWN BY	REV DATE
		MJG	8-27-18