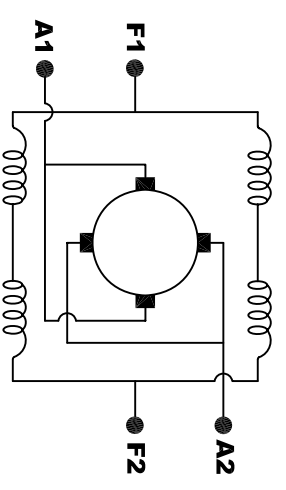
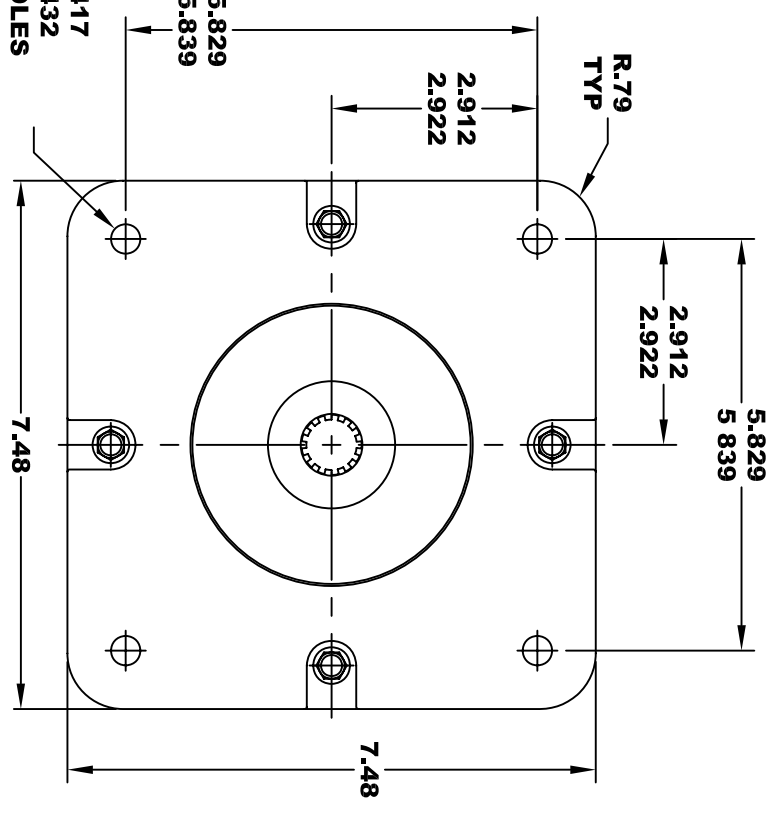
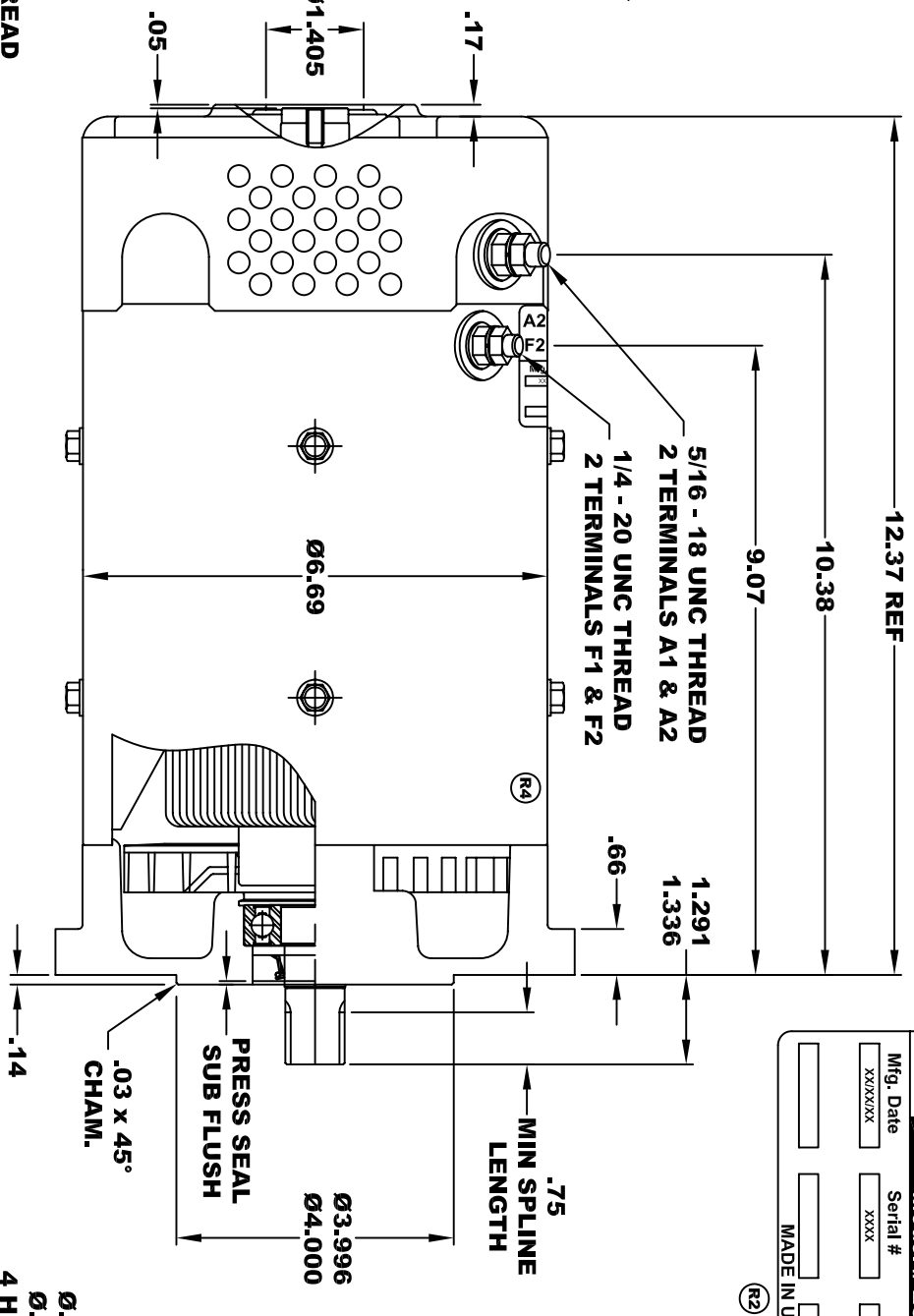
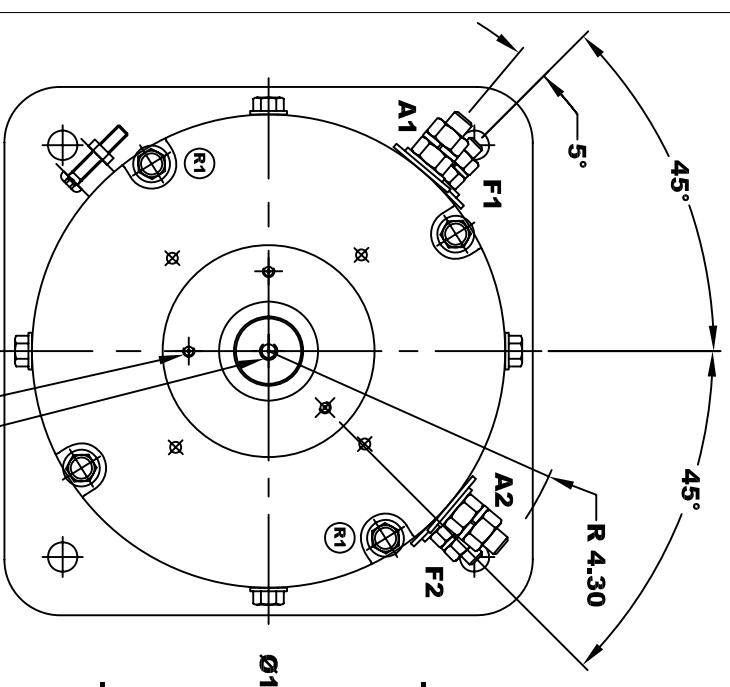


**TORQUE SPECIFICATION FOR
POWER CABLE SECURING TOP NUTS**
5/16-18 UNC (A1 / A2) - 110 IN / LBS MAX
1/4-20 UNC (F1 / F2) - 50 IN / LBS MAX

D&D MOTOR SYSTEMS INC.			
SYRACUSE N.Y.			
A2	A1	F1	F2
Model #	ES-120-8	Rating	CLASS H
Mfg. Date	xxxx/xx/xx	Serial #	xxxx
Voltage	xx	MADE IN U.S.A.	



MOTOR WIRING CONNECTIONS:
CW ROTATION DRIVE END
CONNECT A1 & F1 TO ONE BATTERY TERMINAL
CONNECT A2 & F2 TO OTHER BATTERY TERMINAL
CCW ROTATION DRIVE END
SWITCH F1 & F2 CONNECTIONS

EXTERNAL INVOLUTE SPLINE DATA	
STANDARD	ANSI B92.1 - 1996
ROOT TYPE	FLAT
FIT TYPE	SIDE
NUMBER OF TEETH	13
SPLINE PITCH	16 / 32
PRESSURE ANGLE	30°
MAJOR DIAMETER	.8535 / .8565
CIRCULAR TOOTH THICKNESS	
TOLERANCE CLASS FIT	5
MAX EFFECTIVE	0.0982
MIN ACTUAL	0.0956

MOTOR WEIGHT: 62 LBS
CLASS "H" INSULATION
PERFORMANCE SPEC: 8

THIS PRINT IS THE PROPERTY OF D&D MOTOR SYSTEMS INC.
DO NOT SCALE
WORK TO DIMENSIONS
TOLERANCES UNLESS OTHERWISE SPECIFIED ARE AS FOLLOWS
.XX _____ .01
.XXX _____ .005
.XX ROUGH CASTING _____ .03
HOLES _____ -.001 / +.006
ANGLES _____ 0°30"

D & D MOTOR SYSTEMS INC
MOTOR OUTLINE

SIZE	DRAWN DATE	RELEASE DATE	DWG NO. / PART NO.	REV
B	8-5-05		ES-120-8	R4
SCALE	STF	DRAWN BY	MJG	REV DATE
				5-29-13