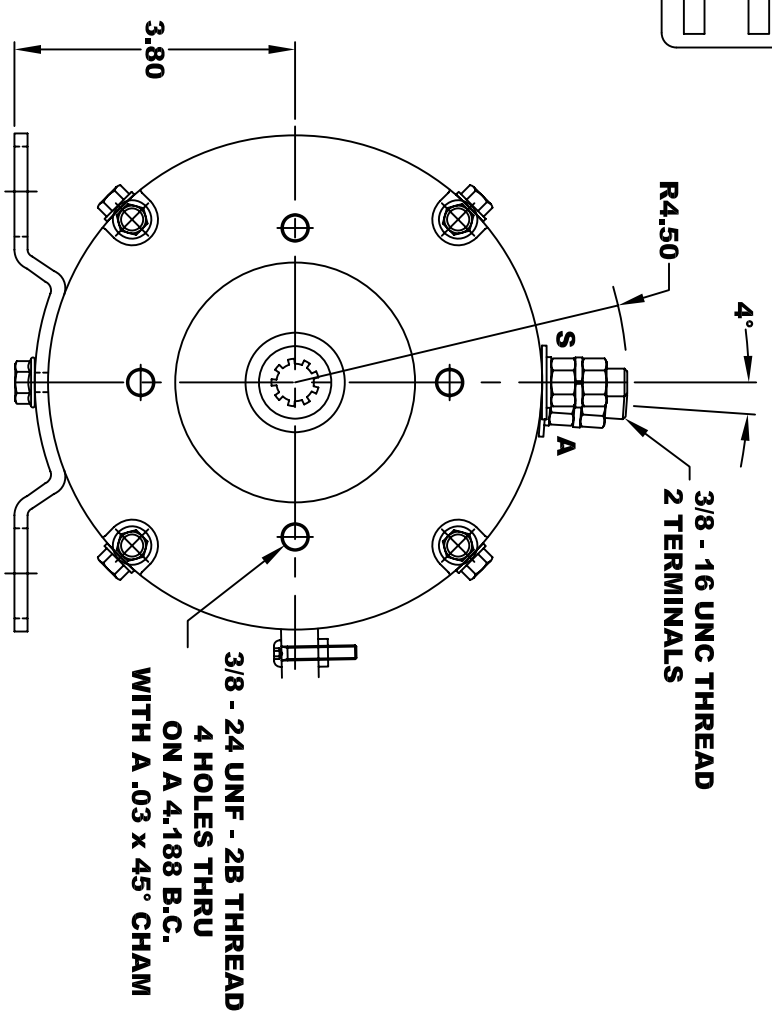
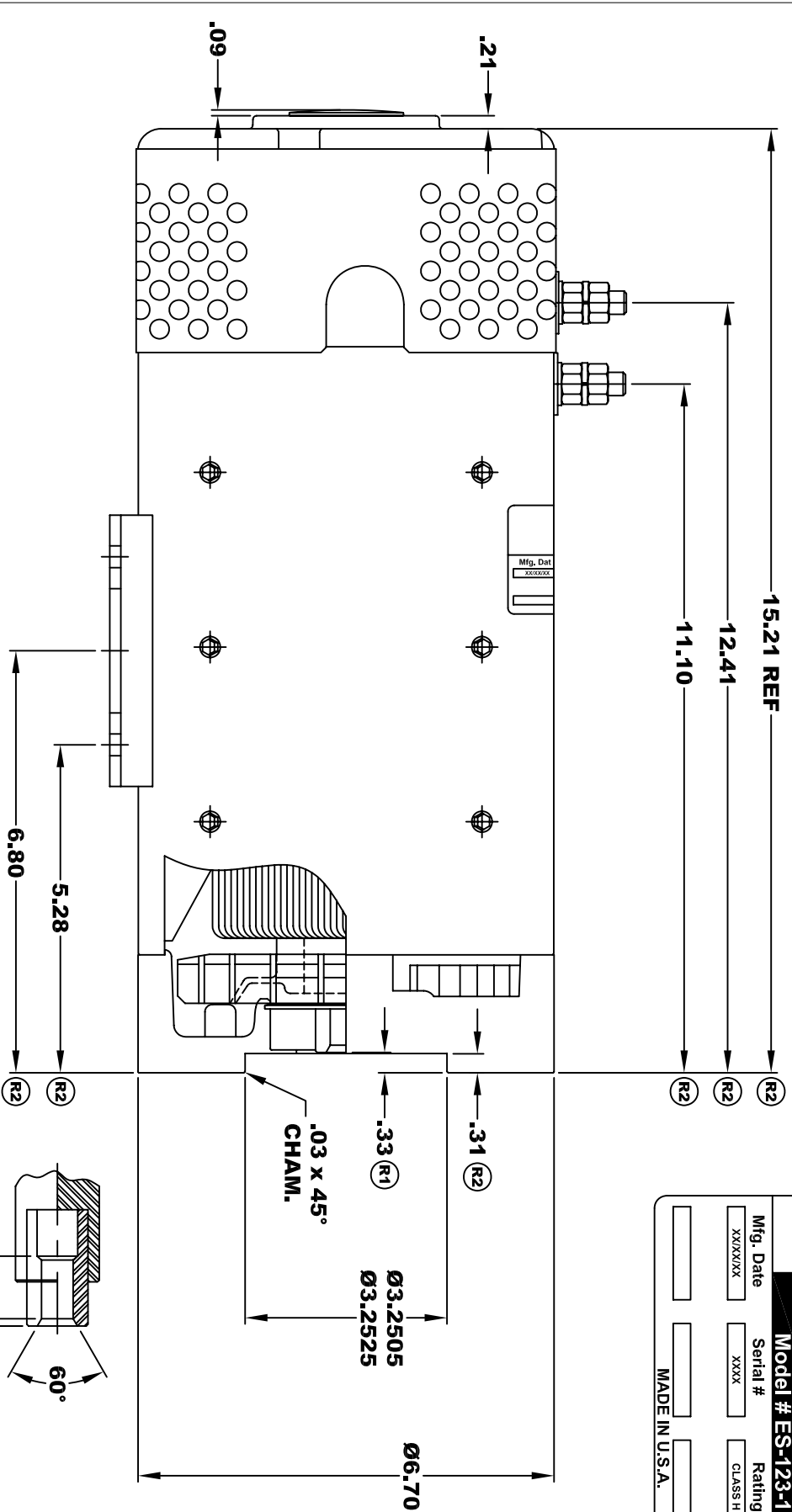


D&D MOTOR SYSTEMS INC.
SYRACUSE N.Y.

Model # ES-123-16

Mfg. Date	Serial #	Rating	Voltage
XXXX/XX	XXXX	CLASS H	XXXX
MADE IN U.S.A.			

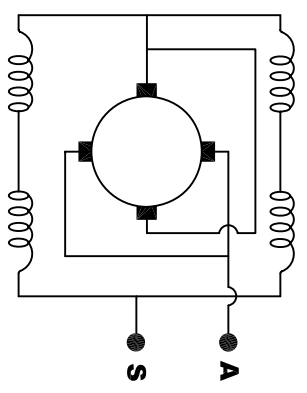
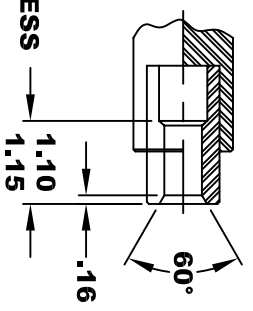
**TORQUE SPECIFICATION FOR
POWER CABLE SECURING TOP NUTS**
3/8 - 16 UNC - 140 IN / LBS MAX



**INTERNAL INVOLUTE SPLINE SPECIFICATION
FLAT ROOT SIDE FIT (PER A.N.S.I. B92.1 CLASS 5)**

- NO. OF TEETH _____ 9
- SPLINE PITCH _____ 16 / 32
- PRESSURE ANGLE _____ 30°
- BASE Ø _____ .4871 REF
- PITCH Ø _____ .5625 REF
- MAJOR Ø _____ .651
- FORM Ø _____ .629
- MINOR Ø _____ .509 - .514

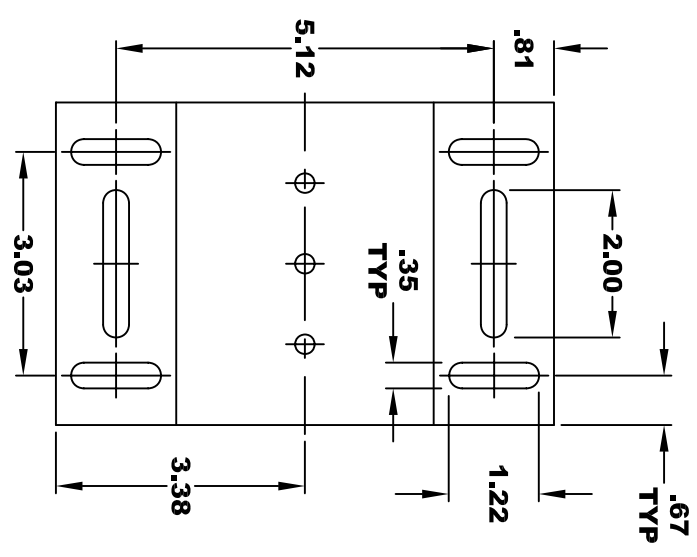
SPLINE HARDNESS
R/C 46 - 52



ELECTRICAL WIRING DIAGRAM

MOTOR WIRING CONNECTIONS:
CCW ROTATION DRIVE END
CONNECT ONE POWER CABLE TO TERMINAL A
CONNECT THE OTHER POWER CABLE TO TERMINAL S

MOTOR WEIGHT: XX LBS
CLASS "H" INSULATION
PERFORMANCE SPEC: 16



- CIRCULAR SPACE WIDTH**
- MAX ACTUAL _____ .1008
- MIN EFFECTIVE _____ .0982
- MAX DIMENSION BETWEEN TWO PINS _____ .3972
- PIN Ø _____ .1080

⊙	.010	A
⊙	.010	B

THIS PRINT IS THE PROPERTY OF D&D MOTOR SYSTEMS INC.
DO NOT SCALE
WORK TO DIMENSIONS
TOLERANCES UNLESS OTHERWISE SPECIFIED ARE AS FOLLOWS

- XX _____ .01
- .XXX _____ .005
- .XX ROUGH CASTING _____ .03
- HOLES _____ -.001 / +.006
- ANGLES _____ 0°30"

D & D MOTOR SYSTEMS INC

MOTOR OUTLINE

SIZE	DRAWN DATE	RELEASE DATE	DWG NO. / PART NO.	REV
B	3-16-07		ES-123-16	R2
SCALE	STF	DRAWN BY	MJG	REV DATE
				2-16-16