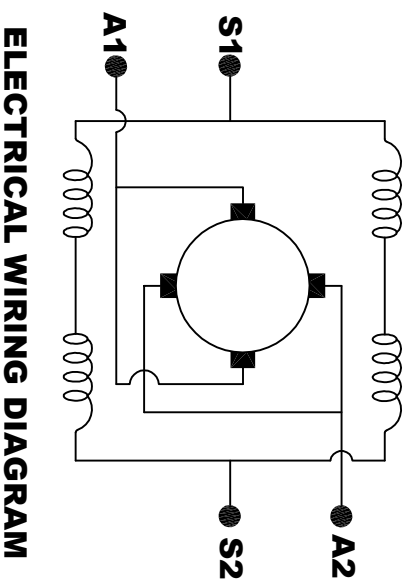
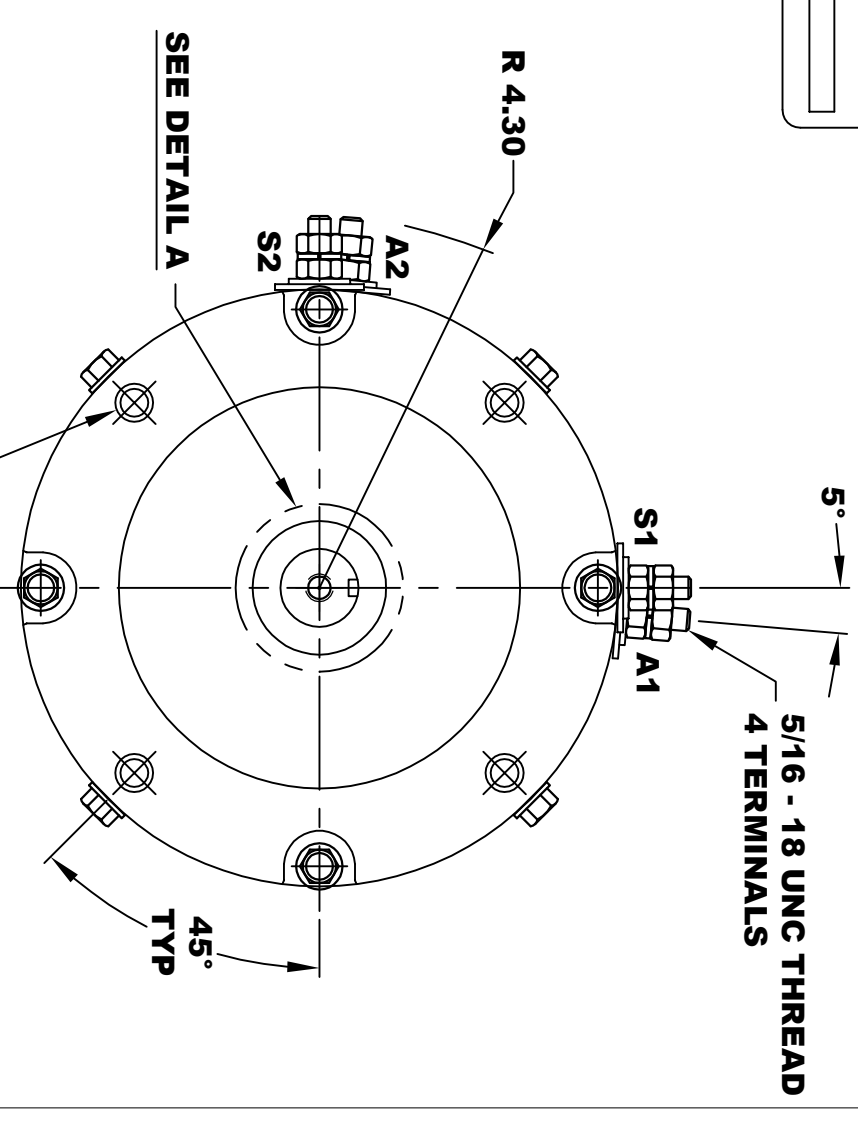
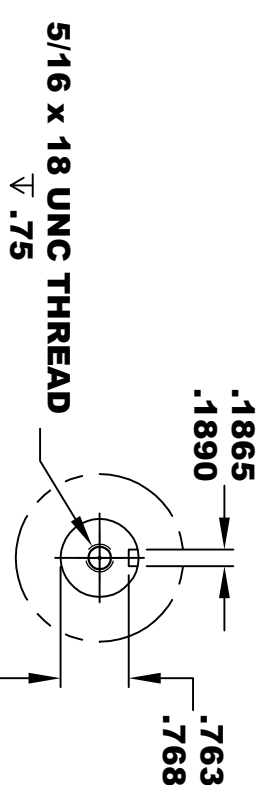
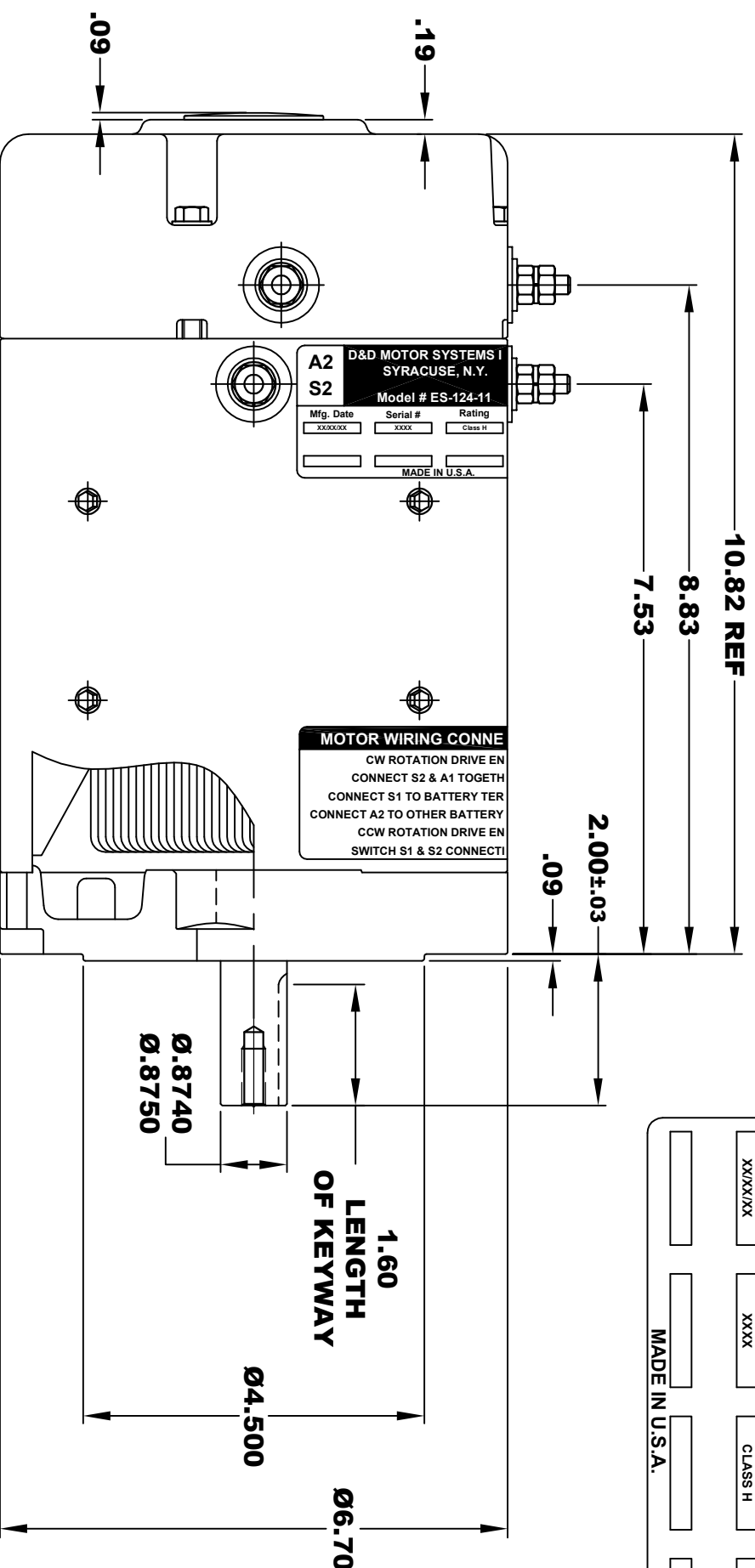


**TORQUE SPECIFICATION FOR  
POWER CABLE SECURING TOP NUTS  
5/16-18 UNC - 110 IN / LBS MAX**

<b>D&amp;D MOTOR SYSTEMS INC.</b>				<b>A1</b>
<b>SYRACUSE N.Y.</b>				<b>S1</b>
<b>Model # ES-124-11</b>				
Mfg. Date	Serial #	Rating	Voltage	
XXXXXX	XXXX	CLASS H	XX	
MADE IN U.S.A.				



**MOTOR WIRING CONNECTIONS:**  
**CW ROTATION DRIVE END**  
 CONNECT S2 & A1 TOGETHER  
 CONNECT S1 TO BATTERY TERMINAL  
**CCW ROTATION DRIVE END**  
 SWITCH S1 & S2 CONNECTIONS

**DETAIL A**

THIS PRINT IS THE PROPERTY OF D&D MOTOR SYSTEMS INC.  
 DO NOT SCALE  
 WORK TO DIMENSIONS  
 TOLERANCES UNLESS OTHERWISE SPECIFIED ARE AS FOLLOWS

XX .01  
 .XXX .005  
 .XX ROUGH CASTING .03  
 HOLES .001 / +.006  
 ANGLES 0°30"

**D & D MOTOR SYSTEMS INC**

**MOTOR OUTLINE**

SIZE	DRAWN DATE	RELEASE DATE	DWG NO. / PART NO.	REV
B	12-10-19		ES-124-11	R1
SCALE	STF	DRAWN BY	MJG	REV DATE
				12-11-19