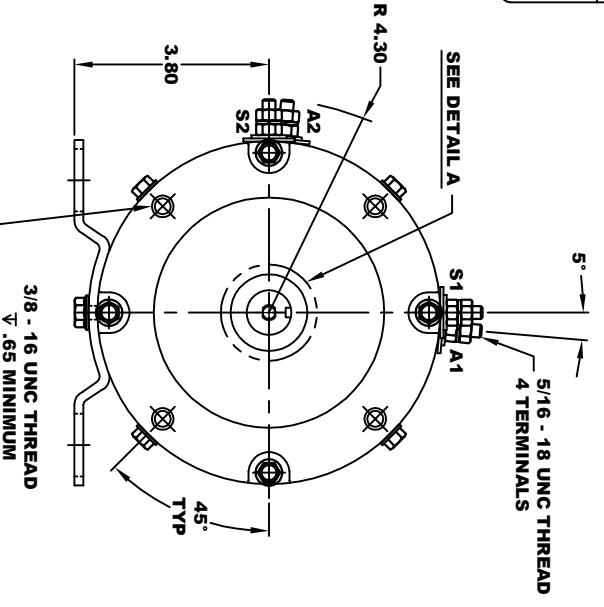
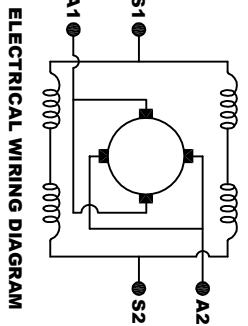
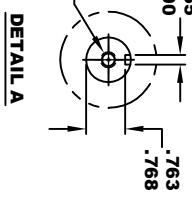
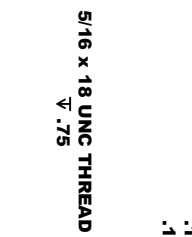
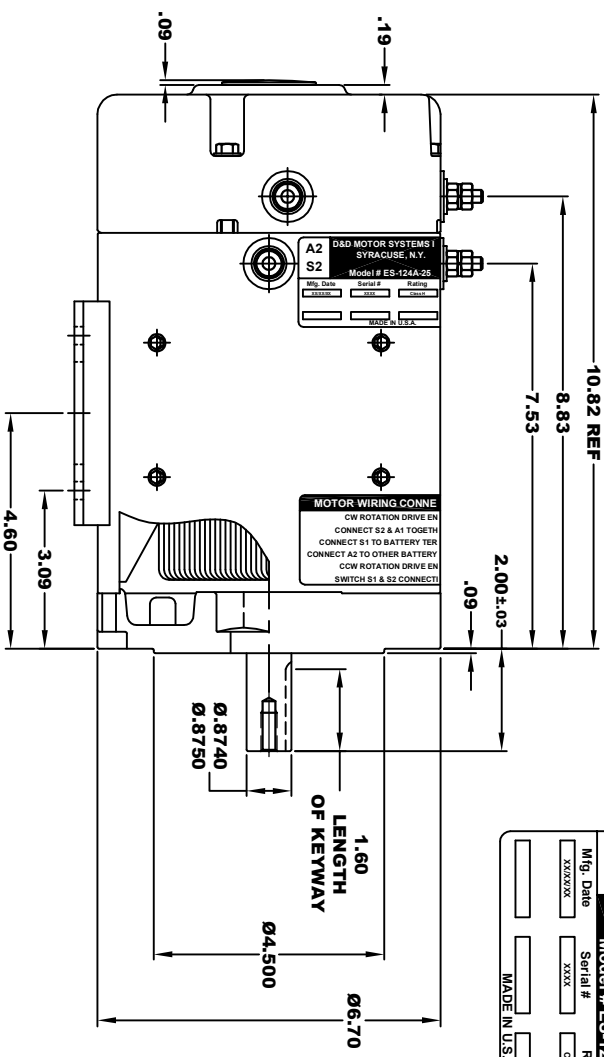


<b>D&amp;D MOTOR SYSTEMS INC.</b>		<b>A1</b>
SYRACUSE N.Y.		<b>S1</b>
<b>A2</b>	<b>S2</b>	<b>A1</b>
Model # ES-124A-25		
Mfg. Date	Serial #	Rating
XXXXXX	XXXX	CLASS H
		12V - 20V
		Voltage
		MADE IN U.S.A.



**MOTOR WIRING CONNECTIONS:**  
 CW ROTATION DRIVE END  
 CONNECT S2 & A1 TOGETHER  
 CONNECT S1 TO BATTERY TERMINAL  
 CONNECT A2 TO OTHER BATTERY TERMINAL  
 CCW ROTATION DRIVE END  
 SWITCH S1 & S2 CONNECTIONS

**MOTOR WEIGHT: 58 LBS**  
**CLASS "H" INSULATION**  
**PERFORMANCE SPEC: 25**

THIS PRINT IS THE PROPERTY OF D&D MOTOR SYSTEMS INC.  
 DO NOT SCALE  
 WORK TO DIMENSIONS  
 TOLERANCES UNLESS OTHERWISE SPECIFIED ARE AS FOLLOWS  
 .XX .01  
 .XXX .005  
 .XX ROUNDED CASTING .03  
 HOLES .001 / +.006  
 ANGLES 0-30°

<b>D &amp; D MOTOR SYSTEMS INC</b>	
<b>MOTOR OUTLINE</b>	
SIZE	DRAWN DATE
B	9-5-24
SCALE	STF
RELEASE DATE	DWG NO. / PART NO.
	ES-124A-25
DRAWN BY	REV DATE
MJG	