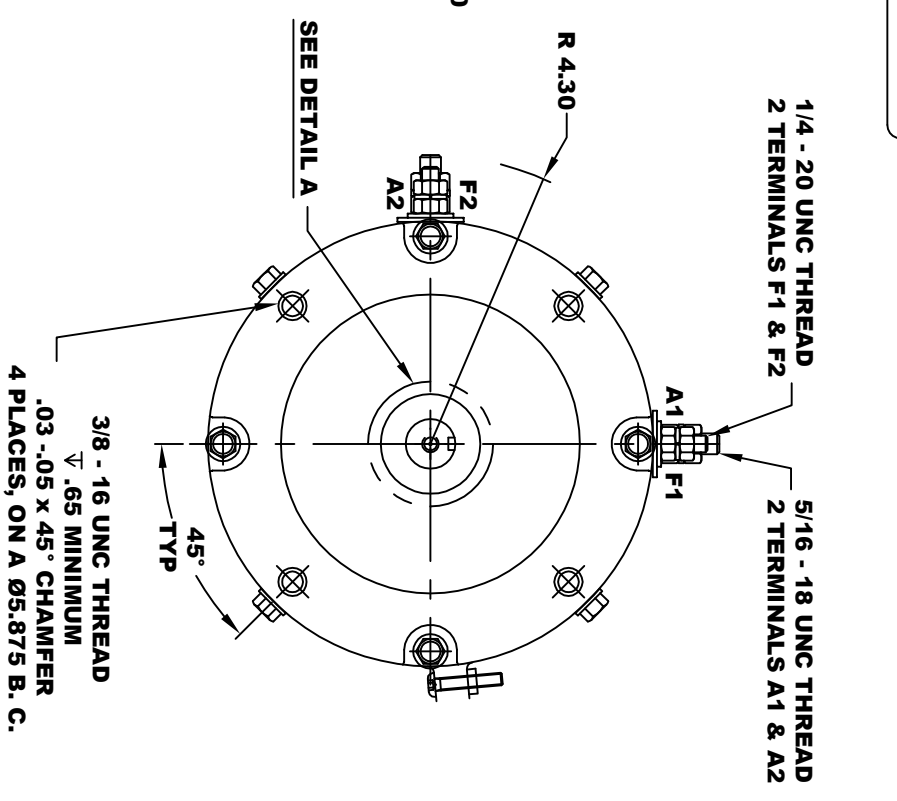
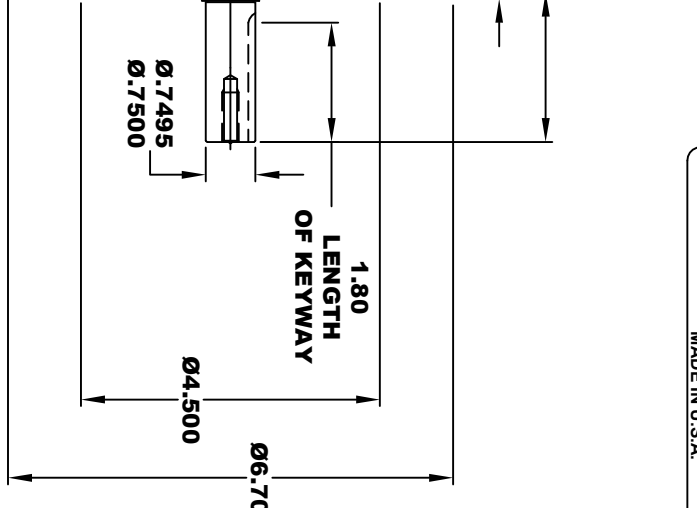
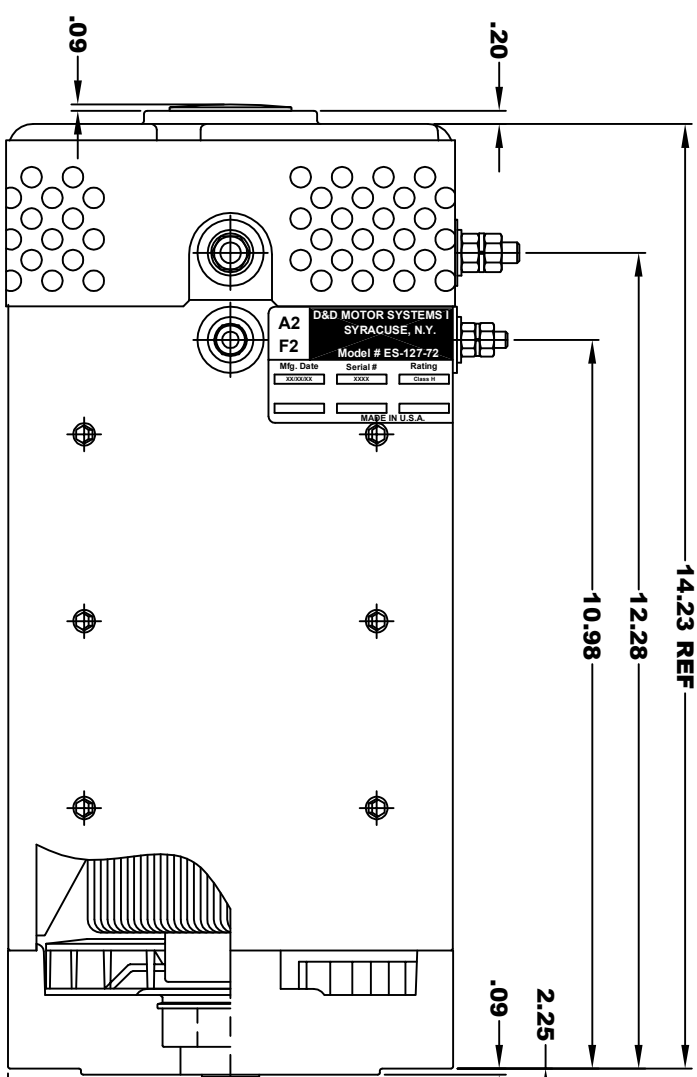
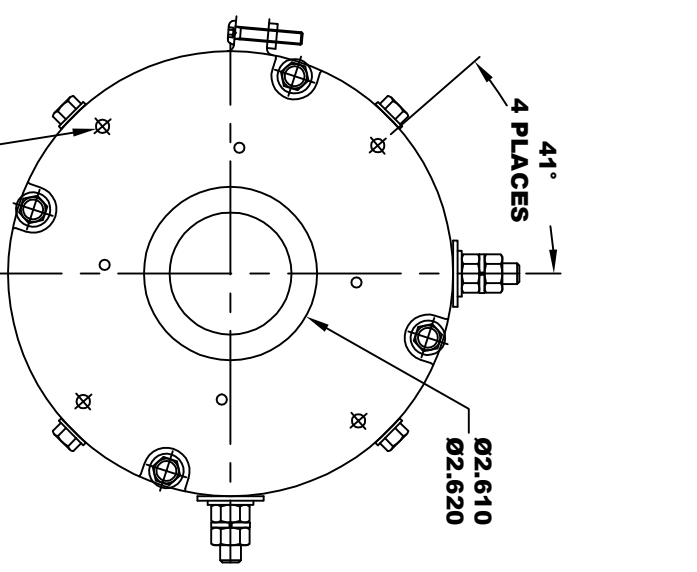
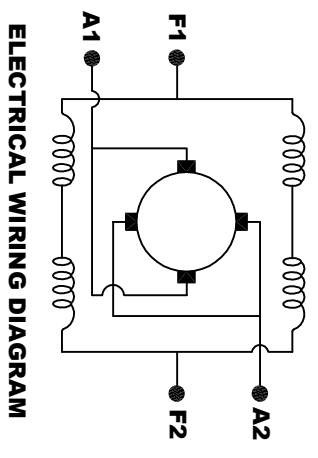


**TORQUE SPECIFICATION FOR  
POWER CABLE SECURING TOP NUTS**  
5/16-18 UNC (A1 / A2) - 110 IN / LBS MAX  
1/4-20 UNC (F1 / F2) - 50 IN / LBS MAX

<b>D&amp;D MOTOR SYSTEMS INC.</b>		<b>A1</b>	
SYRACUSE N.Y.		<b>F1</b>	
<b>Model # ES-127-72</b>			
Mfg. Date	Serial #	Rating	Voltage
XX/XX/XX	XXXX	Class H	XX
MADE IN U.S.A.			



**MOTOR WEIGHT: 79 LBS**  
**CLASS "H" INSULATION**  
**PERFORMANCE SPEC: 72**



**MOTOR WIRING CONNECTIONS:**  
**CW ROTATION DRIVE END**  
CONNECT A1 & F1 TO ONE BATTERY TERMINAL  
CONNECT A2 & F2 TO OTHER BATTERY TERMINAL  
**CCW ROTATION DRIVE END**  
SWITCH F1 & F2 CONNECTIONS

THIS PRINT IS THE PROPERTY OF D&D MOTOR SYSTEMS INC.  
DO NOT SCALE  
WORK TO DIMENSIONS  
TOLERANCES UNLESS OTHERWISE SPECIFIED ARE AS FOLLOWS  
.XX \_\_\_\_\_ .01  
.XXX \_\_\_\_\_ .005  
.XX ROUGH CASTING \_\_\_\_\_ .03  
HOLES \_\_\_\_\_ .001 / +.006  
ANGLES \_\_\_\_\_ 0.30"

**D & D MOTOR SYSTEMS INC**

# MOTOR OUTLINE

SIZE	DRAWN DATE	RELEASE DATE	DWG NO. / PART NO.	REV
B	8-5-20		ES-127-72	
SCALE	STF	DRAWN BY	MJG	REV DATE