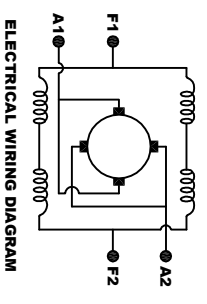
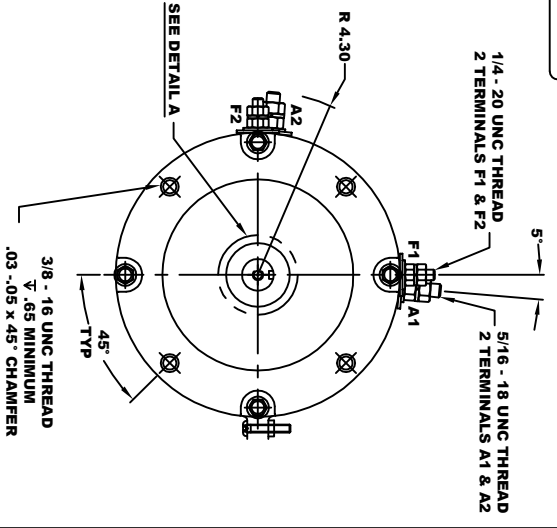
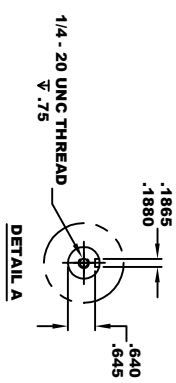
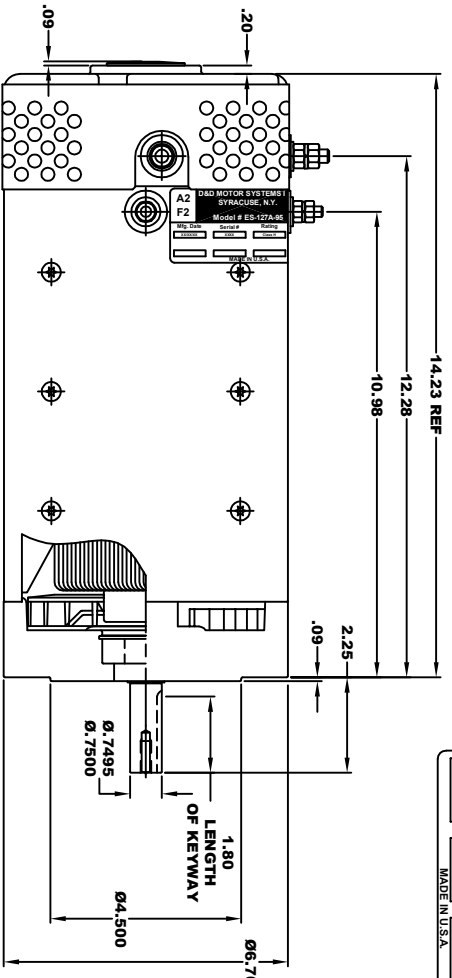
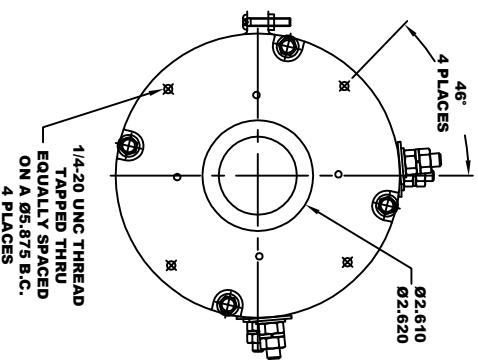


D&D MOTOR SYSTEMS INC.		A1	
SYRACUSE, N.Y.		F1	
Model # ES-127A-95			
Mfg. Date	Serial #	Factory	Voltage
SIZE	SIZE	SIZE	AX
MADE IN U.S.A.			

**TORQUE SPECIFICATION FOR
POWER CABLE SECURING TOP NUTS**
 5/16-18 UNC (A1 / A2) - 110 IN / LBS MAX
 1/4-20 UNC (F1 / F2) - 50 IN / LBS MAX



MOTOR WIRING CONNECTIONS:
 CCM ROTATION DRIVE END
 CONNECT A1 & F1 TO ONE BATTERY TERMINAL
 CCM ROTATION DRIVE END
 CONNECT A2 & F2 TO OTHER BATTERY TERMINAL
 SWITCH F1 & F2 CONNECTIONS

THIS PRINT IS THE PROPERTY OF D&D MOTOR SYSTEMS INC.
 DO NOT SCALE
 WORK TO DIMENSIONS
 TOLERANCES UNLESS OTHERWISE SPECIFIED ARE AS FOLLOWS
 .XX _____ .01
 .XXX _____ .005
 .XXX _____ .03
 HOLES _____ .001 / +.006
 ANGLES _____ 0°-30°

MOTOR WEIGHT: 79 LBS
 CLASS "H" INSULATION
 PERFORMANCE SPEC: 66

D & D MOTOR SYSTEMS INC		MOTOR OUTLINE	
SIZE	DRAWN DATE	RELEASE DATE	DRG NO. / PART NO.
B	4-13-23	ES-127A-95	
SCALE	DRAWN BY	REV DATE	REV
STF	AGD		