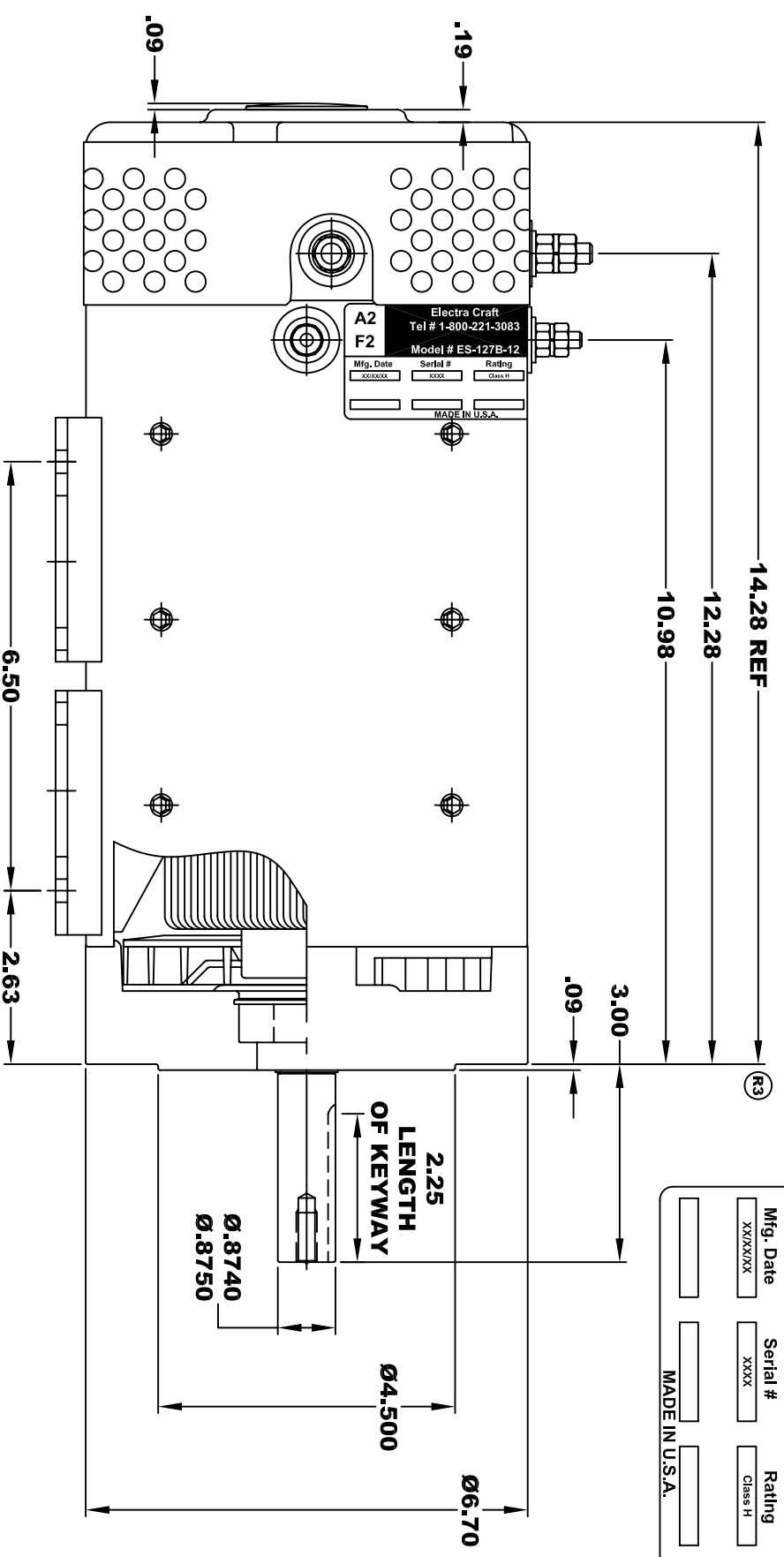
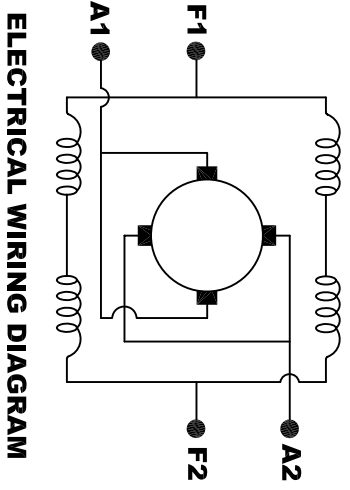
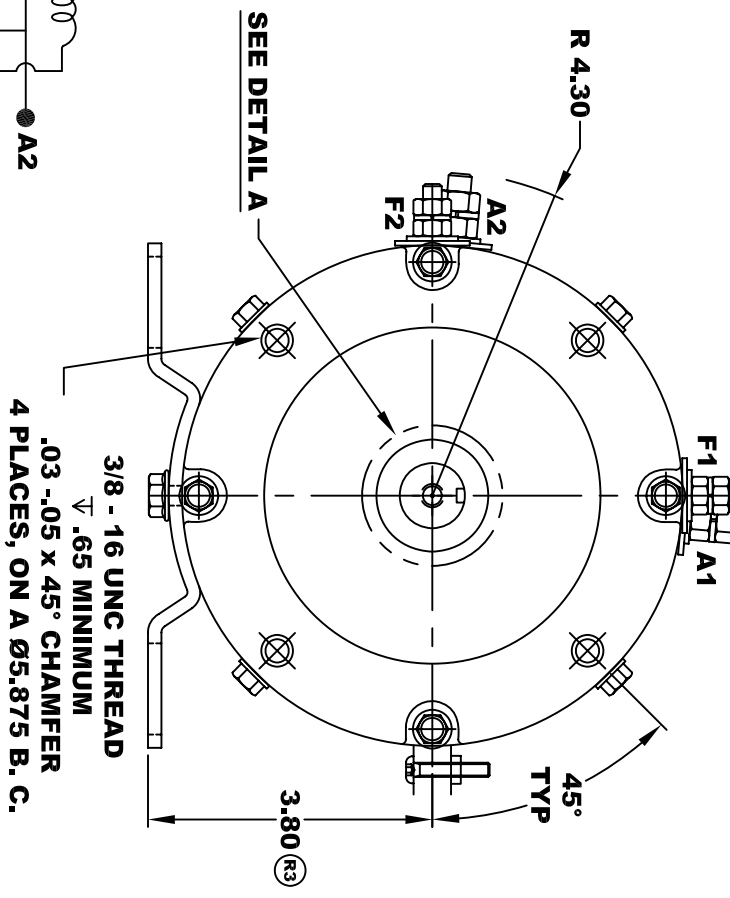


<b>A2</b>		Electra Craft		<b>A1</b>	
<b>F2</b>		Tel # 1-800-221-2083		<b>F1</b>	
Model # ES-127B-12		MADE IN U.S.A.			
Mfg. Date	Serial #	Rating	Voltage		
XXXXXX	XXXX	Class H	36 / 48 / 72		



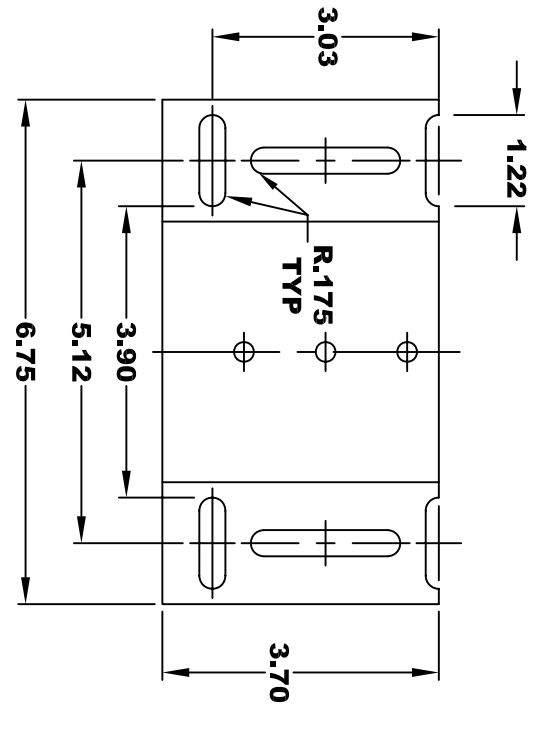
**TORQUE SPECIFICATION FOR  
POWER CABLE SECURING TOP NUTS**  
5/16-18 UNC (A1 / A2) - 110 IN / LBS MAX  
1/4-20 UNC (F1 / F2) - 50 IN / LBS MAX

5°  
1/4 - 20 UNC THREAD  
2 TERMINALS F1 & F2  
5/16 - 18 UNC THREAD  
2 TERMINALS A1 & A2



**ELECTRICAL WIRING DIAGRAM**

**MOTOR WIRING CONNECTIONS:**  
**CW ROTATION DRIVE END**  
CONNECT A1 & F1 TO ONE BATTERY TERMINAL.  
CONNECT A2 & F2 TO OTHER BATTERY TERMINAL  
**CCW ROTATION DRIVE END**  
SWITCH F1 & F2 CONNECTIONS



**5/16 x 18 UNC THREAD**  
TYP .75  
**DETAIL A**

**MOTOR WEIGHT: 82 LBS**  
**CLASS "H" INSULATION**  
**PERFORMANCE SPEC: 12**

THIS PRINT IS THE PROPERTY OF D&D MOTOR SYSTEMS INC.  
DO NOT SCALE  
WORK TO DIMENSIONS  
TOLERANCES UNLESS OTHERWISE SPECIFIED ARE AS FOLLOWS  
.XX \_\_\_\_\_ .01  
.XXX \_\_\_\_\_ .005  
.XX ROUGH CASTING \_\_\_\_\_ .03  
HOLES \_\_\_\_\_ -.001 / +.006  
ANGLES \_\_\_\_\_ 0°30"

**D & D MOTOR SYSTEMS INC**

**MOTOR OUTLINE**

SIZE	DRAWN DATE	RELEASE DATE	DWG NO. / PART NO.	REV
B	2-10-11		ES-127B-12	R3
SCALE	STF	DRAWN BY	MJG	REV DATE
				6-26-15