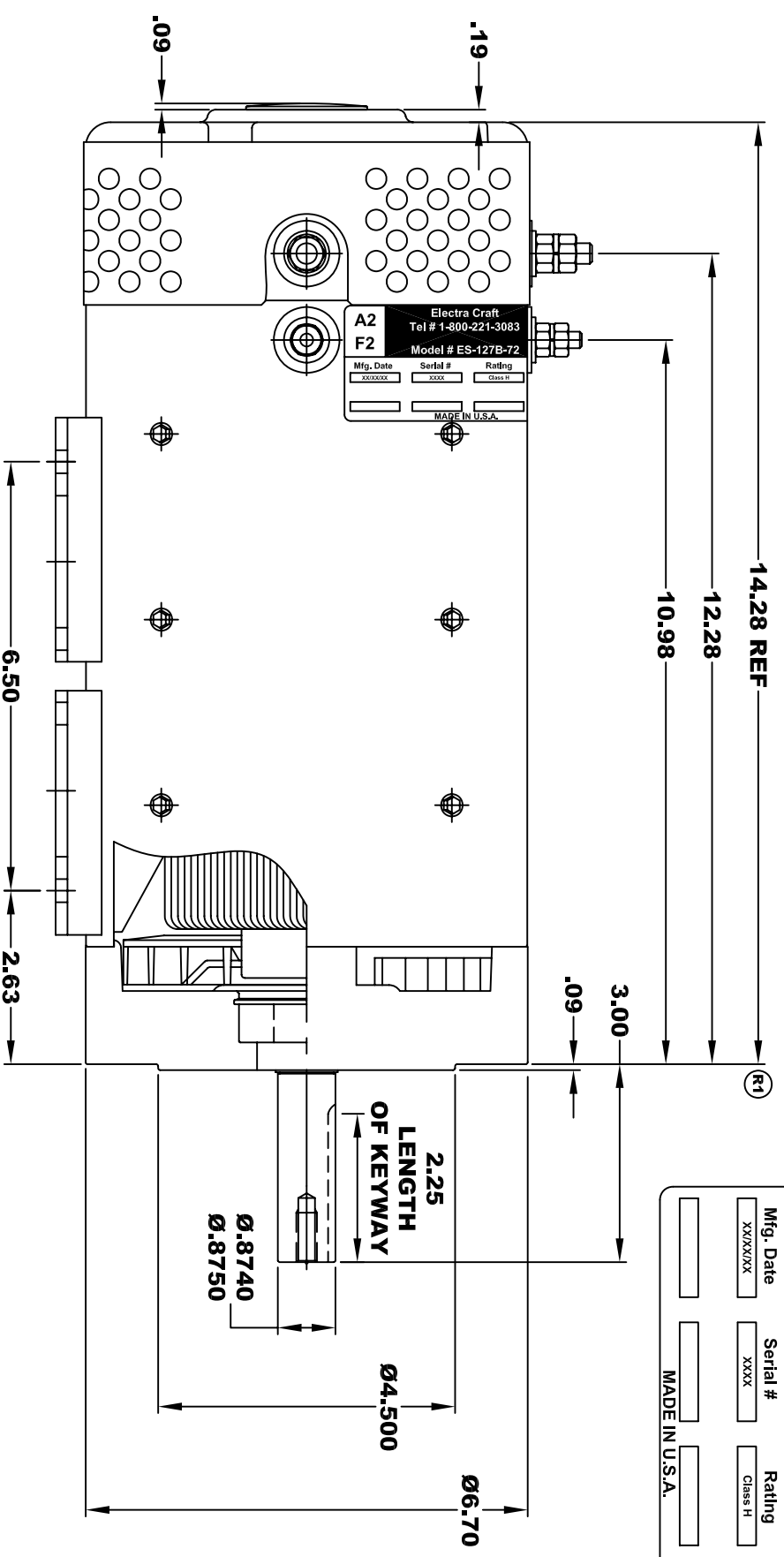


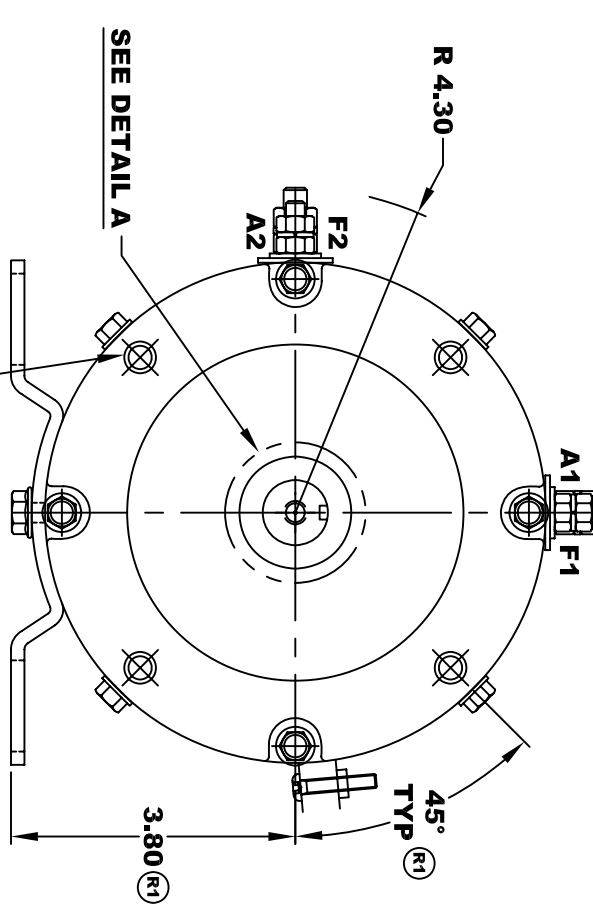
A2		Electra Craft		A1	
Tel # 1-800-221-2083		Tel # 1-800-221-2083			
F2		Model # ES-127B-72		F1	
Mfg. Date	Serial #	Rating	Voltage		
XXXXXX	XXXX	Class H	36 / 48 / 72		
MADE IN U.S.A.					



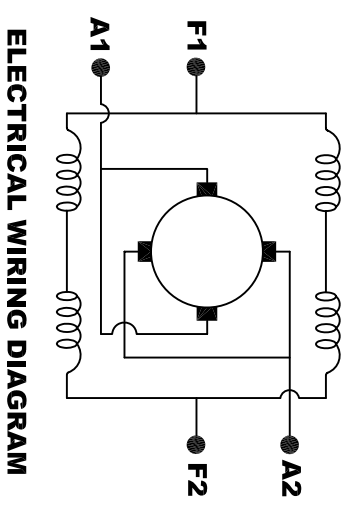
**TORQUE SPECIFICATION FOR
POWER CABLE SECURING TOP NUTS**
5/16-18 UNC (A1 / A2) - 110 IN / LBS MAX
1/4-20 UNC (F1 / F2) - 50 IN / LBS MAX

1/4 - 20 UNC THREAD
2 TERMINALS F1 & F2

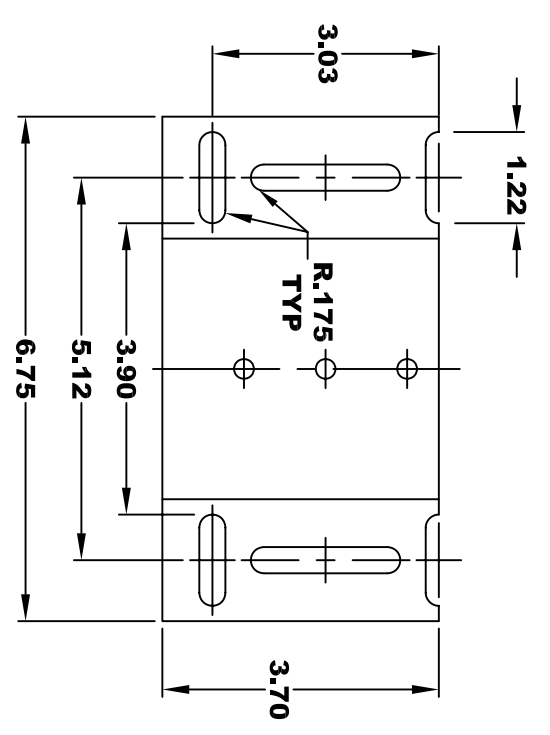
5/16 - 18 UNC THREAD
2 TERMINALS A1 & A2



5/16 x 18 UNC THREAD
TYP .75
DETAIL A



MOTOR WIRING CONNECTIONS:
CW ROTATION DRIVE END
CONNECT A1 & F1 TO ONE BATTERY TERMINAL
CONNECT A2 & F2 TO OTHER BATTERY TERMINAL
CCW ROTATION DRIVE END
SWITCH F1 & F2 CONNECTIONS



MOTOR WEIGHT: 82 LBS
CLASS "H" INSULATION
PERFORMANCE SPEC: 72

THIS PRINT IS THE PROPERTY OF D&D MOTOR SYSTEMS INC.
DO NOT SCALE
WORK TO DIMENSIONS
TOLERANCES UNLESS OTHERWISE SPECIFIED ARE AS FOLLOWS
.XX _____ .01
.XXX _____ .005
.XX ROUGH CASTING _____ .03
HOLES _____ -.001 / +.006
ANGLES _____ 0°30"

D & D MOTOR SYSTEMS INC			
MOTOR OUTLINE			
SIZE	DRAWN DATE	RELEASE DATE	DWG NO. / PART NO.
B	9-30-13		ES-127B-72
SCALE	STF	DRAWN BY	MJG
			REV DATE
			R1 6-26-15