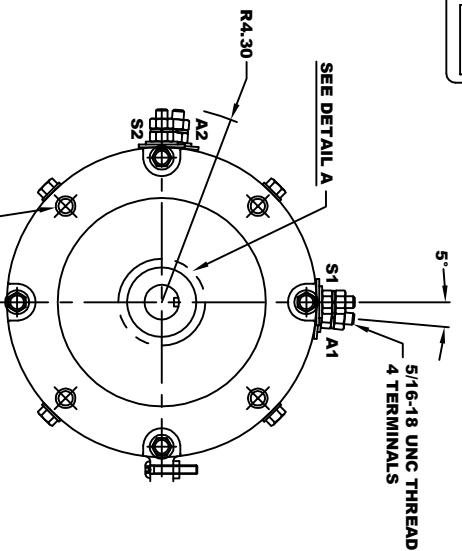
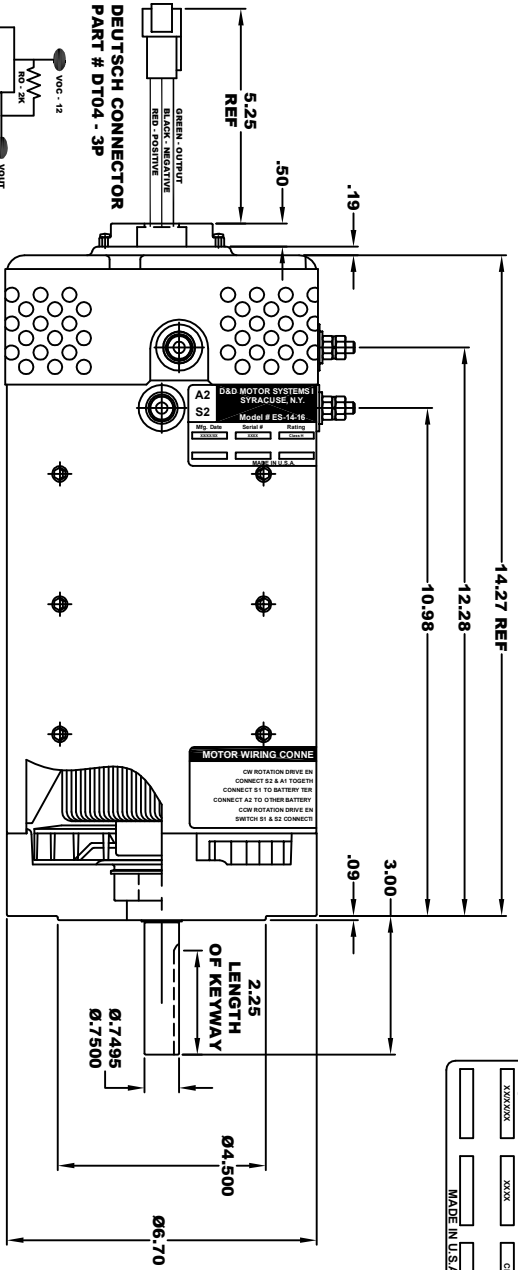


D&D MOTOR SYSTEMS INC.		A1
SYRACUSE N.Y.		A2
Mfg. Date	Serial #	Model # ES-14-16
XXXXXX	XXXX	Rating
		Class II
		Voltage
		48V / 72V
MADE IN U.S.A.		

**TORQUE SPECIFICATION FOR
POWER CABLE SECURING TOP NUTS**
5/16-18 UNC - 110 IN / LBS MAX

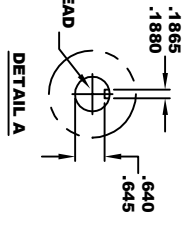


3/8 - 16 UNC THREAD ∇ .65
.03 - .05 x 45° CHAMFER
4 PLACES, ON A Ø5.875 B. C.

MOTOR WEIGHT: 79 LBS
CLASS "H" INSULATION
PERFORMANCE SPEC. 16

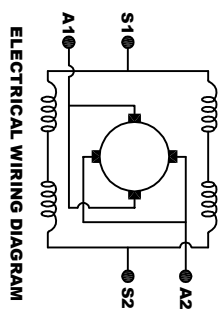
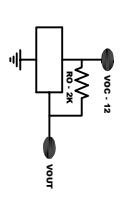
1/4 - 20 UNC THREAD
 ∇ .75

DETAIL A



SPEED SENSOR ELECTRICAL SPECIFICATION:

- 4.5V TO 24V OPERATING VOLTAGE
- 20°C TO 85°C OPERATING TEMPERATURE
- CURRENT SINKING UP TO 25mA
- AN EXTERNAL OUTPUT PULL UP RESISTOR IS REQUIRED
- SENSOR IS DESIGNED TO OPERATE WITH 4 NIS POLEPAIRS AND THE HOUSING, INCLUDING ANY RUNOUT SHOULD NOT EXCEED .030 INCHES



MOTOR WIRING CONNECTIONS:
CW ROTATION DRIVE END
CONNECT S2 & A1 TOGETHER
CONNECT S1 TO BATTERY TERMINAL
CCW ROTATION DRIVE END
CONNECT A2 TO OTHER BATTERY TERMINAL
CONNECT S1 & S2 CONNECTIONS

THIS PRINT IS THE PROPERTY OF D&D MOTOR SYSTEMS INC.
DO NOT SCALE
WORK TO DIMENSIONS
TOLERANCES UNLESS OTHERWISE SPECIFIED ARE AS FOLLOWS
XX01
XXX005
XX ROUGH CASTING03
HOLES001 / +.006
ANGLES0-30°

D & D MOTOR SYSTEMS INC

MOTOR OUTLINE

SIZE	DRAWN DATE	RELEASE DATE	DWG NO. / PART NO.	REV
B	10-22-09		ES-14-16	
SCALE	STF	DRAWN BY	MJG	REV DATE