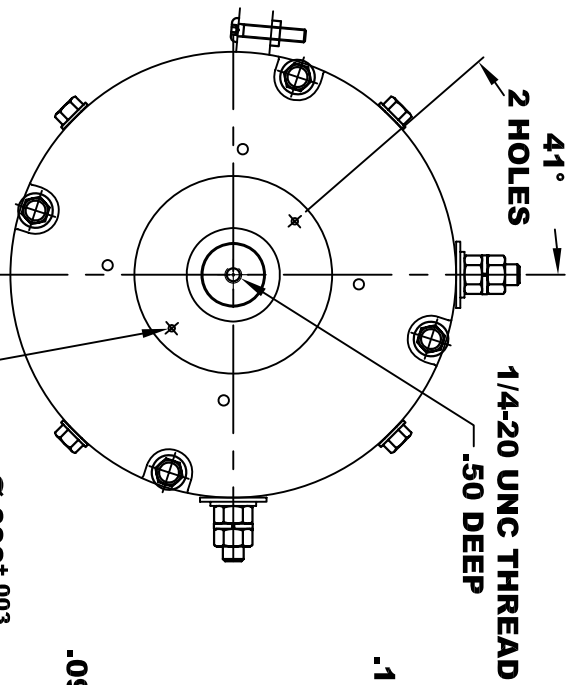
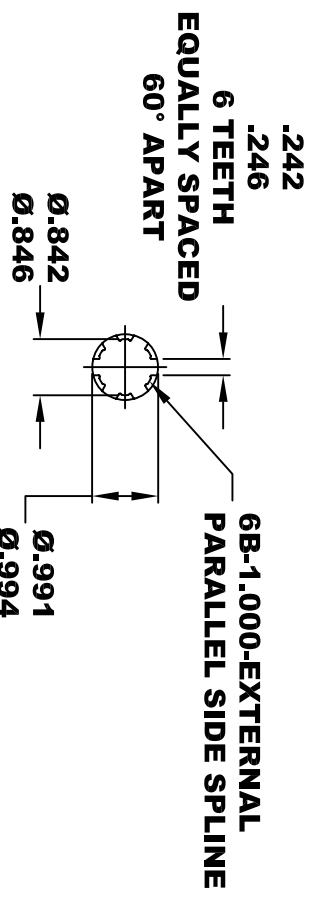
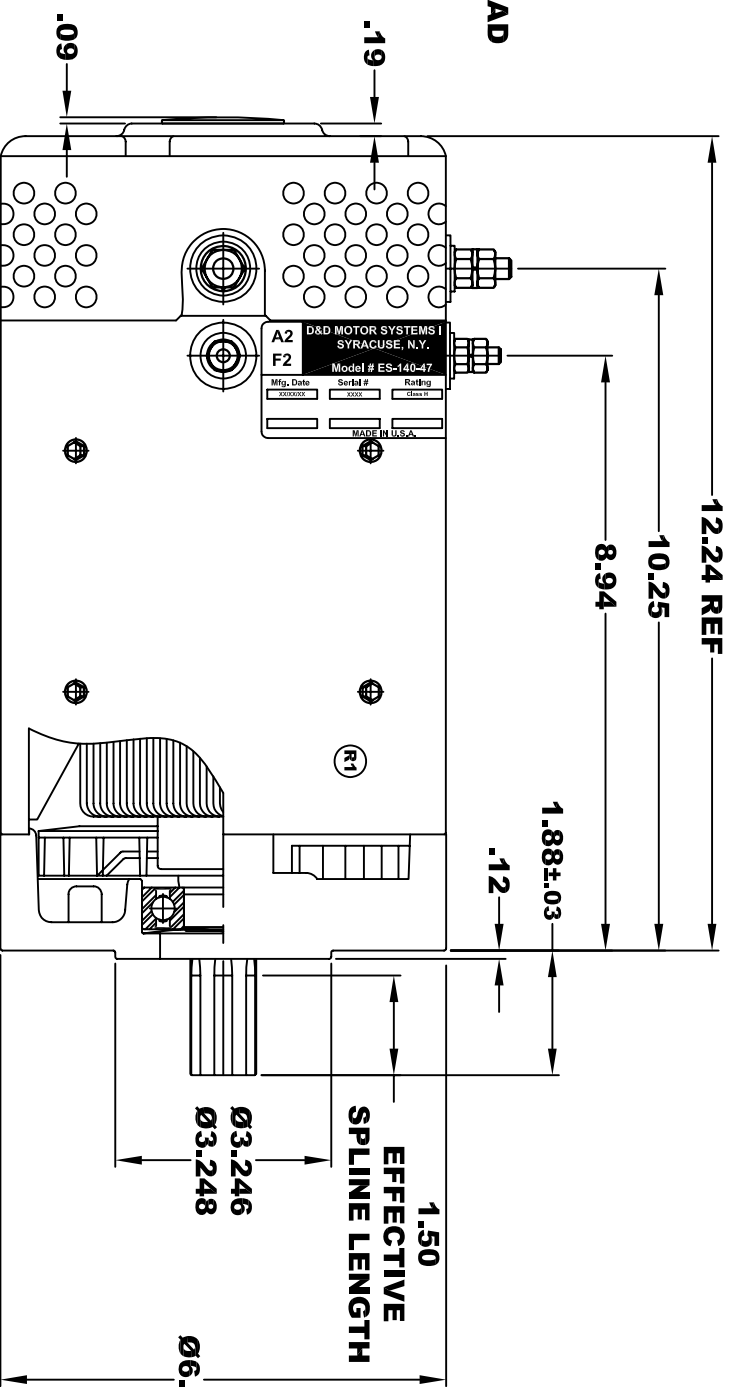


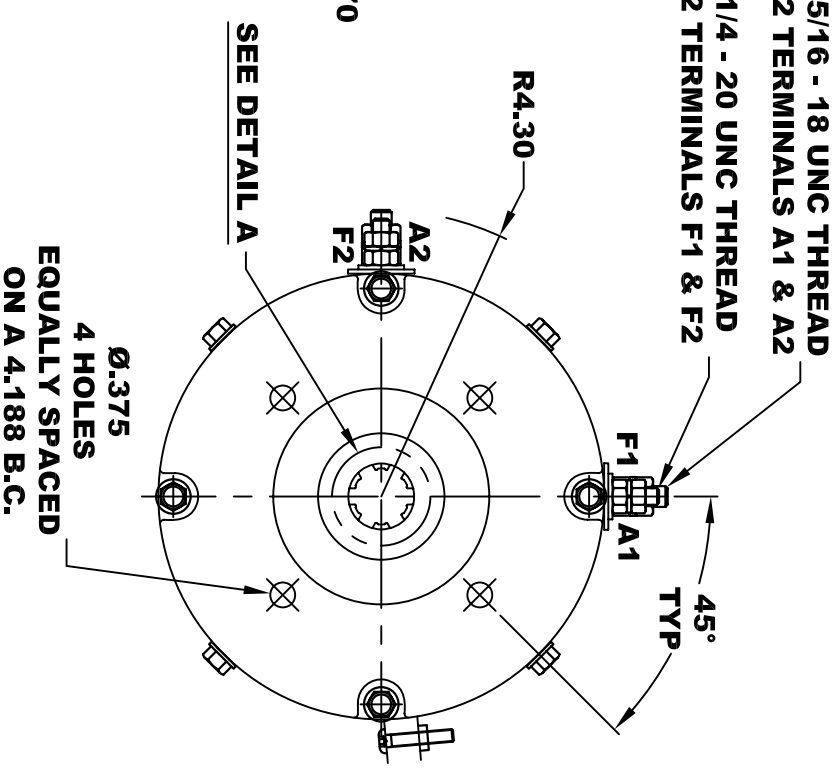
<b>D&amp;D MOTOR SYSTEMS INC.</b>				<b>A1</b>
<b>SYRACUSE N.Y.</b>				<b>F1</b>
<b>F2</b>	<b>A2</b>	<b>Model # ES-140-47</b>		
Mfg. Date	Serial #	Rating	Voltage	
XXXXXX	XXXX	CLASS -I-	48	
MADE IN U.S.A.				



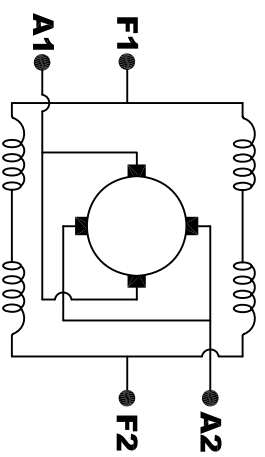
Ø.098<sup>+0.003</sup>  
V.35 - .40  
2 HOLES  
EQUALLY SPACED  
ON A 2.45 B.C.



6 B - MALE SPLINE  
DETAIL A



**TORQUE SPECIFICATION FOR  
POWER CABLE SECURING TOP NUTS**  
5/16-18 UNC (A1 / A2) - 110 IN / LBS MAX  
1/4-20 UNC (F1 / F2) - 50 IN / LBS MAX



ELECTRICAL WIRING DIAGRAM

**MOTOR WIRING CONNECTIONS:**  
**CW ROTATION DRIVE END**  
CONNECT A1 & F1 TO ONE BATTERY TERMINAL  
CONNECT A2 & F2 TO OTHER BATTERY TERMINAL  
**CCW ROTATION DRIVE END**  
SWITCH F1 & F2 CONNECTIONS

THIS PRINT IS THE PROPERTY OF D&D MOTOR SYSTEMS INC.  
DO NOT SCALE  
WORK TO DIMENSIONS  
TOLERANCES UNLESS OTHERWISE SPECIFIED ARE AS FOLLOWS  
.XX \_\_\_\_\_ .01  
.XXX \_\_\_\_\_ .005  
.XX ROUGH CASTING \_\_\_\_\_ .03  
HOLES \_\_\_\_\_ -.001 / +.006  
ANGLES \_\_\_\_\_ 0°30"

**MOTOR WEIGHT: 63 LBS**  
**CLASS "H" INSULATION**  
**PERFORMANCE SPEC: 47**

**D & D MOTOR SYSTEMS INC**

**MOTOR OUTLINE**

SIZE	DRAWN DATE	RELEASE DATE	DWG NO. / PART NO.	REV
B	11-13-08		ES-140-47	R1
SCALE	STF	DRAWN BY	MJG	REV DATE
				5-29-13