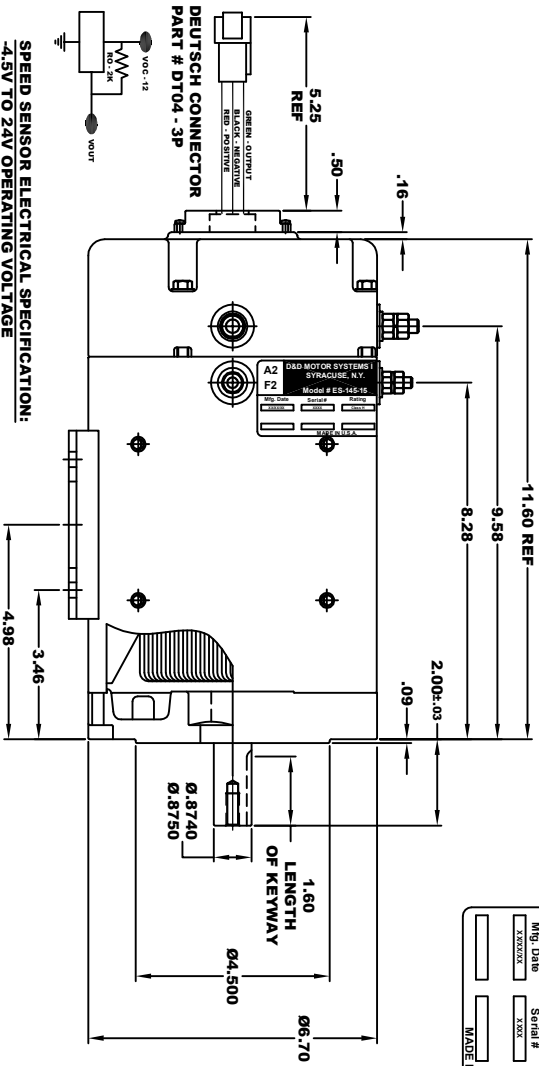


A2	D&D MOTOR SYSTEMS INC.			A1
F2	SYRACUSE N.Y.			
Mfg. Date	Model #	Rating	Class	Voltage
XXXXXX	ES-145-15	XXXX	XXXX	XXXX
Serial #	Class	Class	Class	Class
XXXXXX	XXXX	XXXX	XXXX	XXXX
MADE IN U.S.A.				

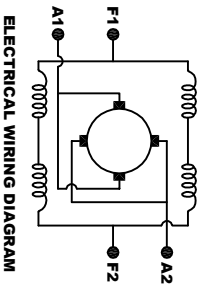
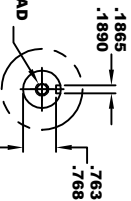
TORQUE SPECIFICATION FOR POWER CABLE SECURING TOP NUTS
 5/16-18 UNC (A1 / A2) - 110 IN / LBS MAX
 1/4-20 UNC (F1 / F2) - 50 IN / LBS MAX



SPEED SENSOR ELECTRICAL SPECIFICATION:
 -4.5V TO 24V OPERATING VOLTAGE
 -20°C TO 85°C OPERATING TEMPERATURE
 -CURRENT SINKING UP TO 25mA
 -AN EXTERNAL OUTPUT PULL UP RESISTOR IS REQUIRED
 -SENSOR IS DESIGNED TO OPERATE WITH 4 N/S POLEPAIRS
 THE OPERATIONAL DISTANCE BETWEEN THE MAGNET
 AND THE HOUSING, INCLUDING ANY RUNOUT
 SHOULD NOT EXCEED .030 INCHES

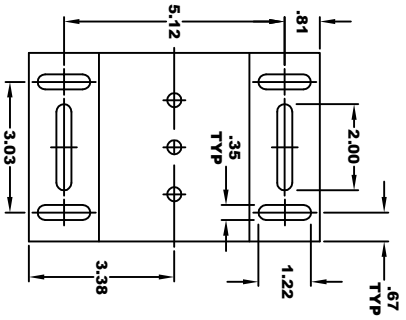
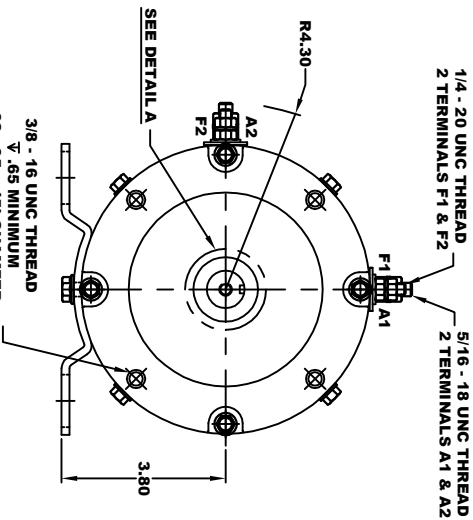
5/16 x 18 UNC THREAD
 V .75

DETAIL A



MOTOR WIRING CONNECTIONS:
 CW ROTATION DRIVE END
 CONNECT A1 & F1 TO ONE BATTERY TERMINAL
 CCW ROTATION DRIVE END
 CONNECT A2 & F2 TO OTHER BATTERY TERMINAL
 SWITCH F1 & F2 CONNECTIONS

3/8 - 16 UNC THREAD
 V .65 MINIMUM
 .03 - .05 X 45° CHAMFER
 4 PLACES, ON A Ø5.875 B. C.



MOTOR WEIGHT: XX LBS
CLASS "H" INSULATION
PERFORMANCE SPEC: 15

THIS PRINT IS THE PROPERTY OF D&D MOTOR SYSTEMS INC.
 DO NOT SCALE
 WORK TO DIMENSIONS
 TOLERANCES UNLESS OTHERWISE SPECIFIED ARE AS FOLLOWS
 .XX .005
 .XXX .01
 .XX RUGH CASTING .03
 HOLES .001 / +.006
 ANGLES .030"

D & D MOTOR SYSTEMS INC			
MOTOR OUTLINE			
SIZE	DRAWN DATE	RELEASE DATE	DWG NO. / PART NO.
B	10-1-20		ES-145-47
SCALE	DRAWN BY	REV	REV DATE
STF	MJG		