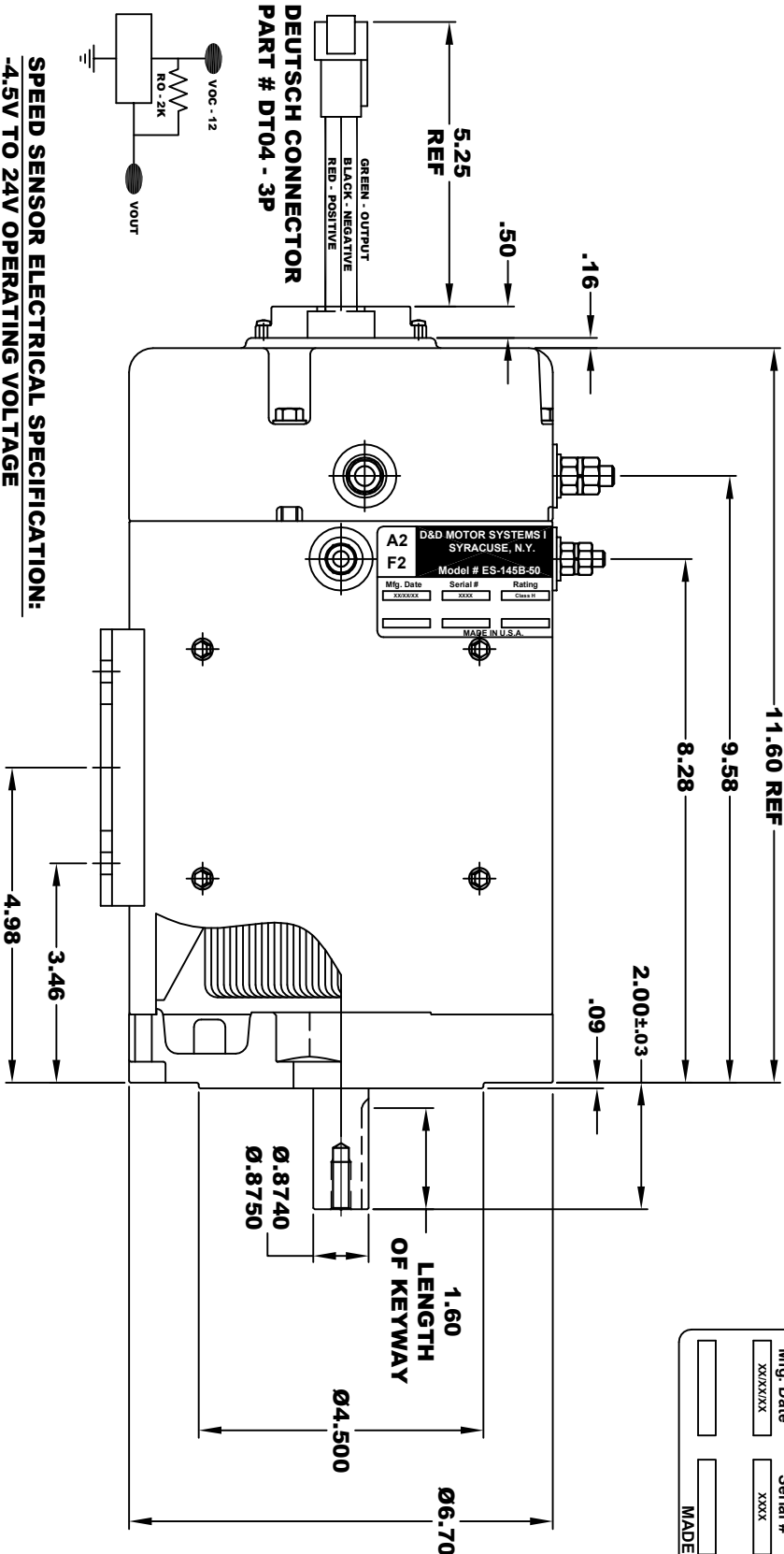


D&D MOTOR SYSTEMS INC.				
A2	SYRACUSE N.Y.			A1
F2	Model # ES-145B-50			F1
Mfg. Date	Serial #	Rating	Voltage	
XXXX/XX	XXXX	CLASS H	XX	
		MADE IN U.S.A.		

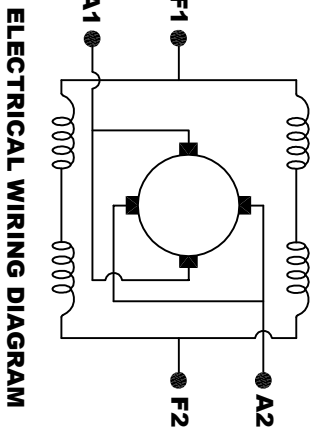
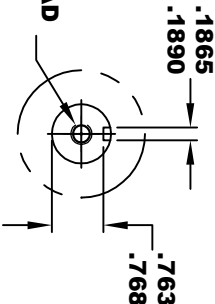
TORQUE SPECIFICATION FOR
POWER CABLE SECURING TOP NUTS
5/16-18 UNC (A1 / A2) - 110 IN / LBS MAX
1/4-20 UNC (F1 / F2) - 50 IN / LBS MAX



- SPEED SENSOR ELECTRICAL SPECIFICATION:**
- 4.5V TO 24V OPERATING VOLTAGE
 - 20°C TO 85°C OPERATING TEMPERATURE
 - CURRENT SINKING UP TO 25mA
 - AN EXTERNAL OUTPUT PULL UP RESISTOR IS REQUIRED
 - SENSOR IS DESIGNED TO OPERATE WITH 4 N/S POLEPAIRS
 - THE OPERATIONAL DISTANCE BETWEEN THE MAGNET AND THE HOUSING, INCLUDING ANY RUNOUT SHOULD NOT EXCEED .030 INCHES

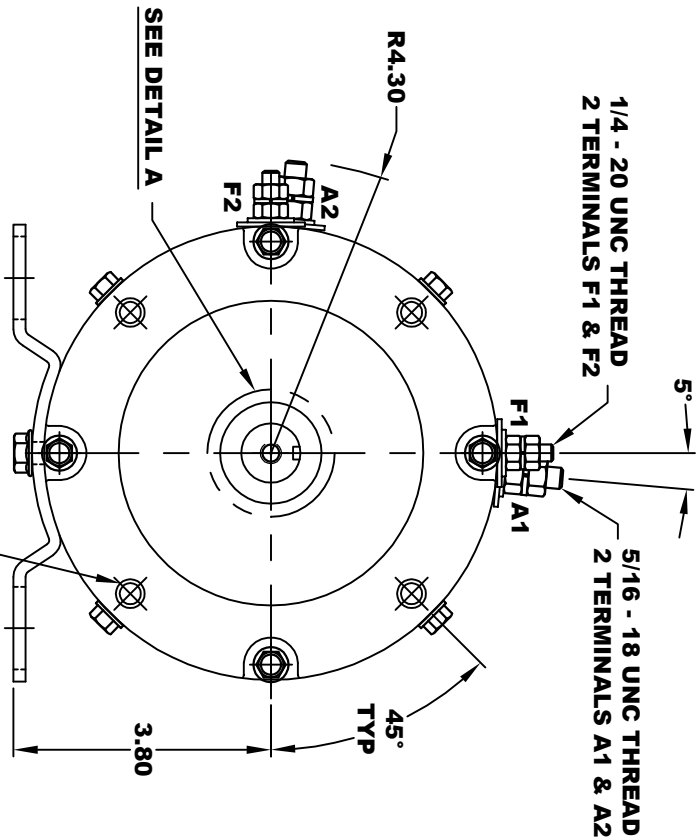
5/16 x 18 UNC THREAD
V .75

DETAIL A

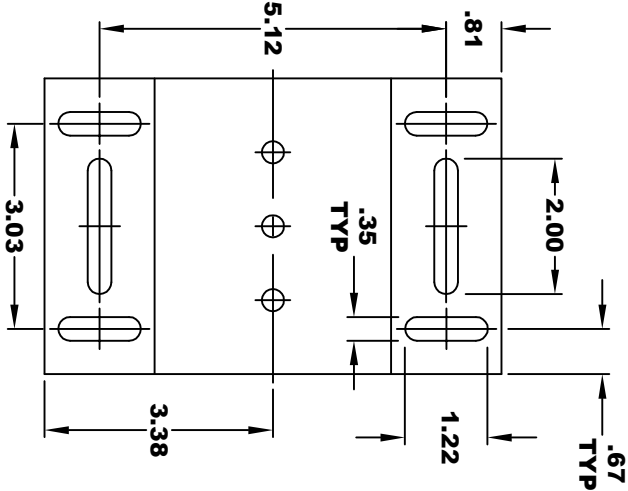


ELECTRICAL WIRING DIAGRAM

3/8 - 16 UNC THREAD
V .65 MINIMUM
.03 -.05 x 45° CHAMFER
4 PLACES, ON A Ø5.875 B. C.



MOTOR WIRING CONNECTIONS:
CW ROTATION DRIVE END
CONNECT A1 & F1 TO ONE BATTERY TERMINAL
CONNECT A2 & F2 TO OTHER BATTERY TERMINAL
CCW ROTATION DRIVE END
SWITCH F1 & F2 CONNECTIONS



MOTOR WEIGHT: 63 LBS
CLASS "H" INSULATION
PERFORMANCE SPEC: 50

THIS PRINT IS THE PROPERTY OF D&D MOTOR SYSTEMS INC.

DO NOT SCALE

WORK TO DIMENSIONS

TOLERANCES UNLESS OTHERWISE SPECIFIED ARE AS FOLLOWS

.XX_____ .01

.XXX_____ .005

.XX ROUGH CASTING_____ .03

HOLES_____ .001 / +.006

ANGLES_____ 0°30"

D & D MOTOR SYSTEMS INC

MOTOR OUTLINE

SIZE	DRAWN DATE	RELEASE DATE	DWG NO. / PART NO.	REV
B	1-11-18		ES-145B-50	
SCALE	STF	DRAWN BY	MJG	REV DATE