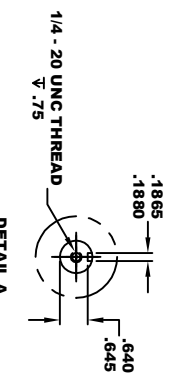
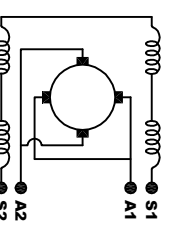
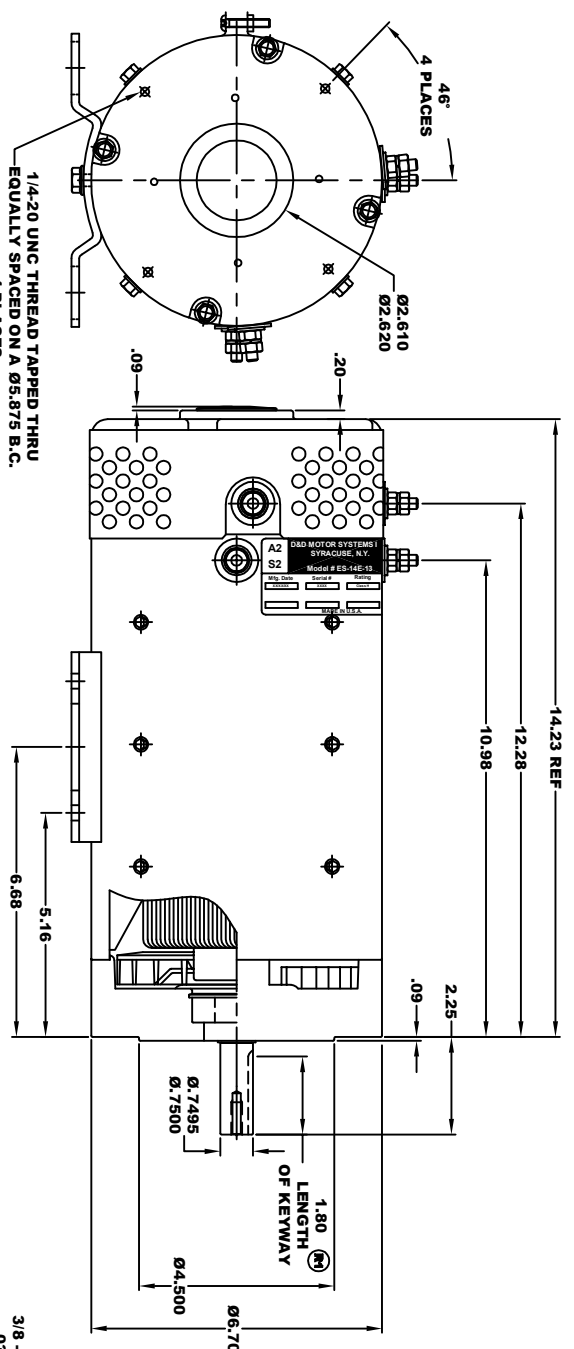


<b>D&amp;D MOTOR SYSTEMS INC.</b>		<b>A2</b>	<b>A1</b>
SYRACUSE N.Y.		<b>S2</b>	<b>S1</b>
Model # ES-14E-13			
Mfg. Date	Serial #	Rating	Voltage
XXXXXX	XXXX	CLASS 13	312.00
MADE IN U.S.A.			

**TORQUE SPECIFICATION FOR POWER CABLE SECURING TOP NUTS**  
 5/16-18 UNC - 110 IN / LBS MAX



**MOTOR WIRING CONNECTIONS:**  
 CW ROTATION DRIVE END  
 CONNECT S2 & A1 TOGETHER  
 CONNECT S1 TO OTHER BATTERY TERMINAL  
 CONNECT A2 TO OTHER BATTERY TERMINAL  
 CCW ROTATION DRIVE END  
 SWITCH S1 & S2 CONNECTIONS

MOTOR WEIGHT: 79 LBS  
 CLASS "H" INSULATION  
 PERFORMANCE SPEC: 13

THIS PRINT IS THE PROPERTY OF D&D MOTOR SYSTEMS INC.  
 DO NOT SCALE  
 WORK TO DIMENSIONS  
 TOLERANCES UNLESS OTHERWISE SPECIFIED ARE AS FOLLOWS  
 .XX — .01  
 .XXX — .005  
 .XXX — .03  
 HOLES — .001 / +.006  
 ANGLES — 0°30"

<b>D &amp; D MOTOR SYSTEMS INC</b>			
<b>MOTOR OUTLINE</b>			
SIZE	DRAWN DATE	RELEASE DATE	DWG NO. / PART NO.
B	4-11-19		ES-14E-13
SCALE	DRAWN BY	REV	REV DATE
STF	MJG		