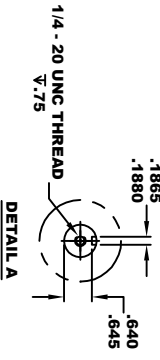
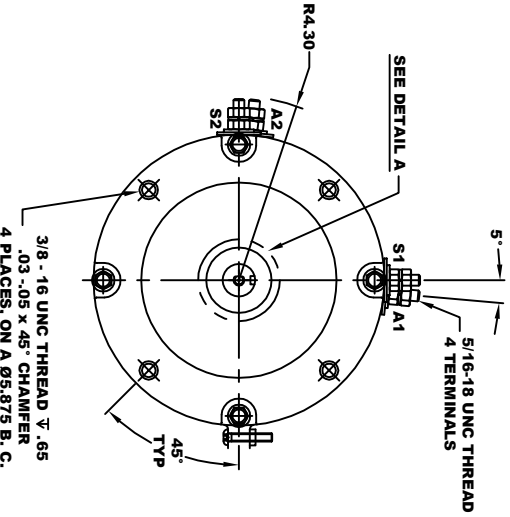
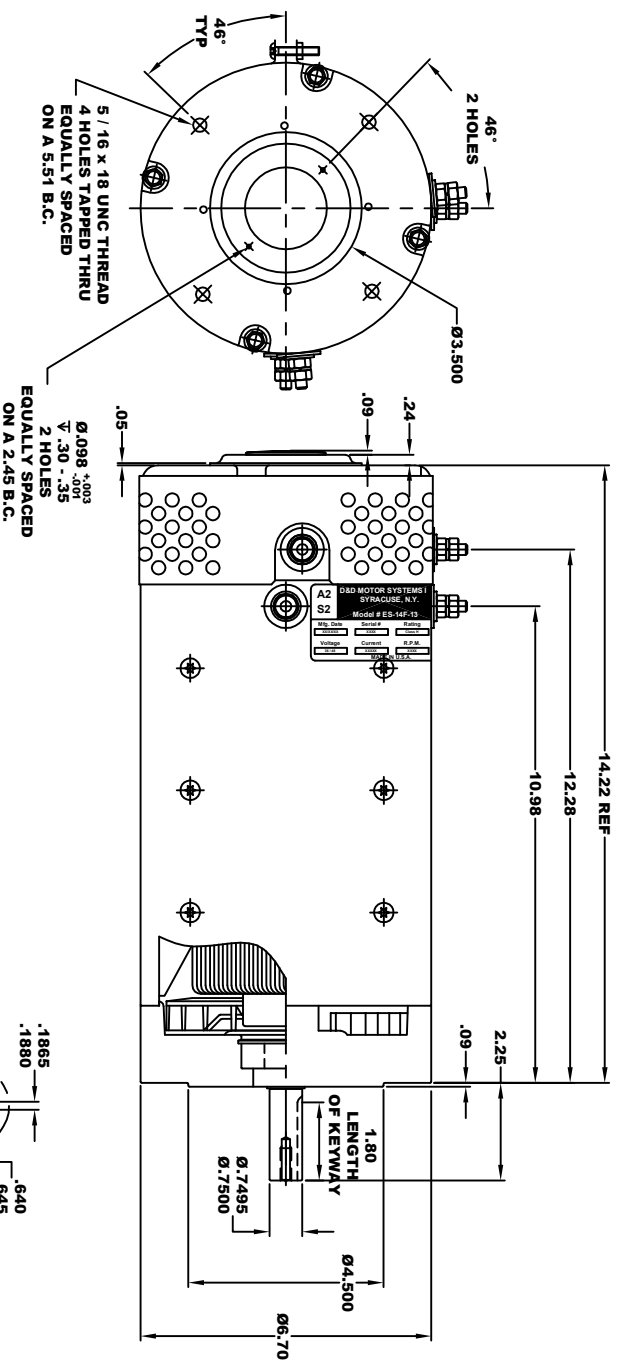


D&D MOTOR SYSTEMS INC.		A1	
SYRACUSE N.Y.		A2	
Model # ES-14F-13			
Mfg Date	Serial #	Rating	Duty
2000000	XXXX	SCOTT	SCOTT
Voltage	Current	R.P.M.	H.P.
3.6/24	XXXX	XXXX	XXXX
MADE IN U.S.A.			

**TORQUE SPECIFICATION FOR
POWER CABLE SECURING TOP NUTS**
5/16-18 UNC - 110 IN / LBS MAX



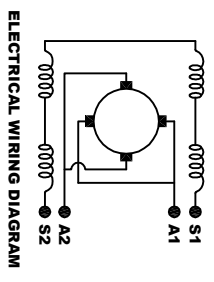
MOTOR WEIGHT: 79 LBS
CLASS "H" INSULATION
PERFORMANCE SPEC: 13 / K-254

D & D MOTOR SYSTEMS INC

MOTOR OUTLINE

SIZE	DRAWN DATE	RELEASE DATE	DRG NO. / PART NO.	REV
B	11-22-24		ES-14F-13	
SCALE	DRAWN BY	MUG	REV DATE	

THIS PRINT IS THE PROPERTY OF D&D MOTOR SYSTEMS INC.
DO NOT SCALE
WORK TO DIMENSIONS
TOLERANCES UNLESS OTHERWISE SPECIFIED ARE AS FOLLOWS
XX .005
XX .01
XX ROUNDED CASTING .03
HOLES .001 / +.006
ANGLES 0-30°



MOTOR WIRING CONNECTIONS:
CW ROTATION DRIVE END
CONNECT S2 & A1 TOGETHER
CONNECT S1 TO BATTERY TERMINAL
CCW ROTATION DRIVE END
CONNECT A2 TO OTHER BATTERY TERMINAL
SWITCH S1 & S2 CONNECTIONS