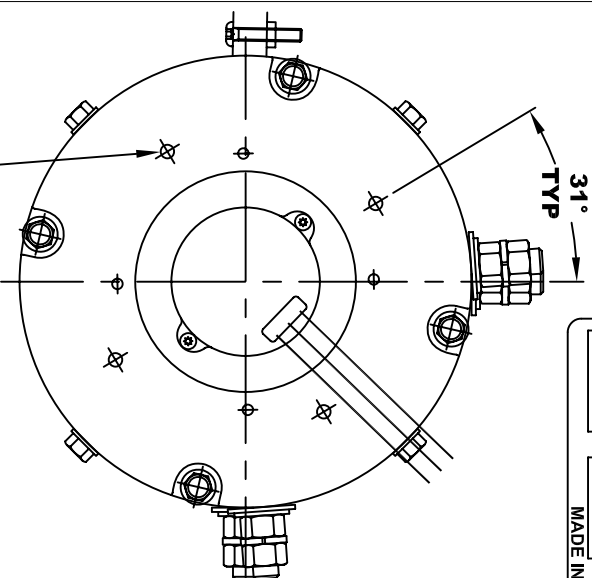
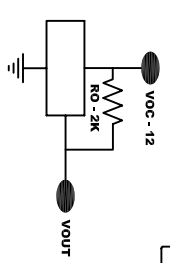


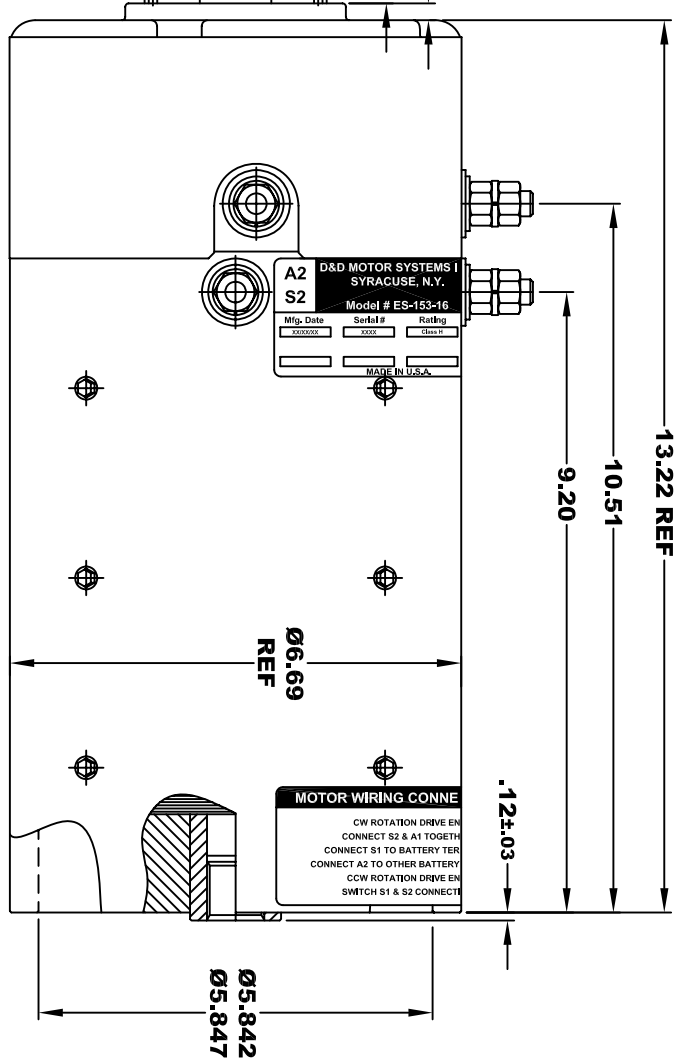
D&D MOTOR SYSTEMS INC.		A1
SYRACUSE N.Y.		S1
Model # ES-153-16		
Mfg. Date	Serial #	Rating
XXXXXX	XXXX	CLASS II
MADE IN U.S.A.		Voltage
		XX



1/4-20 UNC THREAD
TAPPED THRU
EQUALLY SPACED
ON A Ø4.50 B.C.
4 PLACES

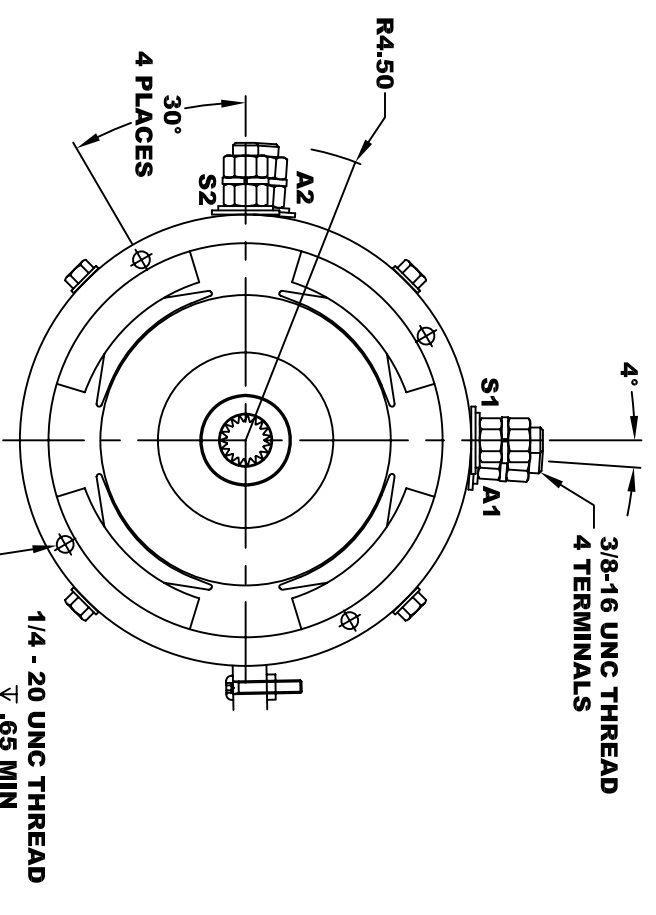


ELECTRICAL SPECIFICATION:
 -4.5V TO 24V OPERATING VOLTAGE
 -20°C TO 85°C OPERATING TEMPERATURE
 -CURRENT SINKING UP TO 25mA
 -AN EXTERNAL OUTPUT PULL UP RESISTOR IS REQUIRED
 -SENSOR IS DESIGNED TO OPERATE WITH 4 N/S POLEPAIRS
 THE OPERATIONAL DISTANCE BETWEEN THE MAGNET
 AND THE HOUSING, INCLUDING ANY RUNOUT
 SHOULD NOT EXCEED .030 INCHES



D&D MOTOR SYSTEMS INC.
SYRACUSE, N.Y.
Model # ES-153-16
Mfg. Date: XXXXXX Serial #: XXXX Rating: CLASS II Voltage: XX
MADE IN U.S.A.

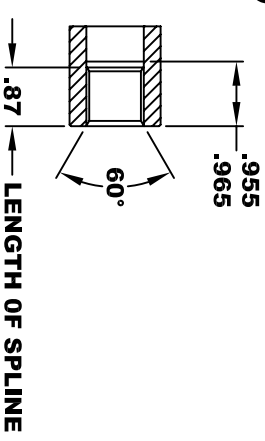
MOTOR WIRING CONNE
 CW ROTATION DRIVE EN
 CONNECT S2 & A1 TOGETH
 CONNECT S1 TO BATTERY TER
 CONNECT A2 TO OTHER BATTERY
 CCW ROTATION DRIVE EN
 SWITCH S1 & S2 CONNECT



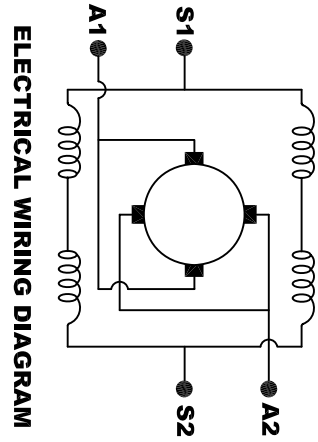
**TORQUE SPECIFICATION FOR
POWER CABLE SECURING TOP NUTS**
 3/8-16 UNC - 140 IN / LBS MAX

**INTERNAL INVOLUTE SPLINE SPECIFICATION
CLASS 5 FILLET ROOT SIDE FIT (PER A.N.S.I. B92.1)**

NO. OF TEETH	19
SPLINE PITCH	24 / 48
PRESSURE ANGLE	45°
BASE Ø	.5597 REF
PITCH Ø	.7916 REF
MAJOR Ø	.850 - .859
FORM Ø	.835
MINOR Ø	.767 - .772
CIRCULAR SPACE WIDTH	.0764
EFFECTIVE SPACE WIDTH	.0738
MAX. DIMENSION BETWEEN TWO PINS	.6714
PIN Ø	.0800
SPLINE HARDNESS TO BE R/C	26-34



MOTOR WEIGHT 77 LBS
CLASS "H" INSULATION
PERFORMANCE SPEC: 16



ELECTRICAL WIRING DIAGRAM

MOTOR WIRING CONNECTIONS:
CW ROTATION DRIVE END
 CONNECT S2 & A1 TOGETHER
 CONNECT S1 TO BATTERY TERMINAL
CCW ROTATION DRIVE END
 CONNECT A2 TO OTHER BATTERY TERMINAL
 SWITCH S1 & S2 CONNECTIONS

D & D MOTOR SYSTEMS INC

MOTOR OUTLINE

THIS PRINT IS THE PROPERTY OF D&D MOTOR SYSTEMS INC.
 DO NOT SCALE
 WORK TO DIMENSIONS
 TOLERANCES UNLESS OTHERWISE SPECIFIED ARE AS FOLLOWS
 .XX _____ .01
 .XXX _____ .005
 .XX ROUGH CASTING _____ .03
 HOLES _____ -.001 / +.006
 ANGLES _____ 0°30"

SIZE	DRAWN DATE	RELEASE DATE	DWG NO. / PART NO.	REV
B	9-22-10		ES-153-16	
SCALE	STF	DRAWN BY	MJG	REV DATE