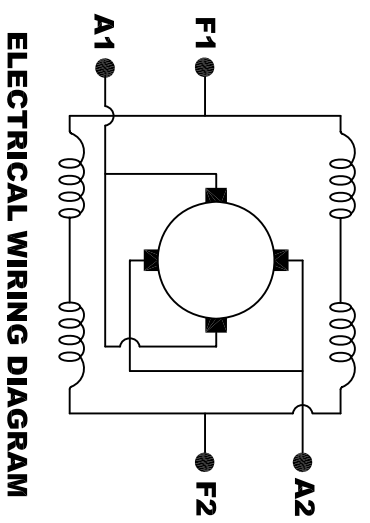
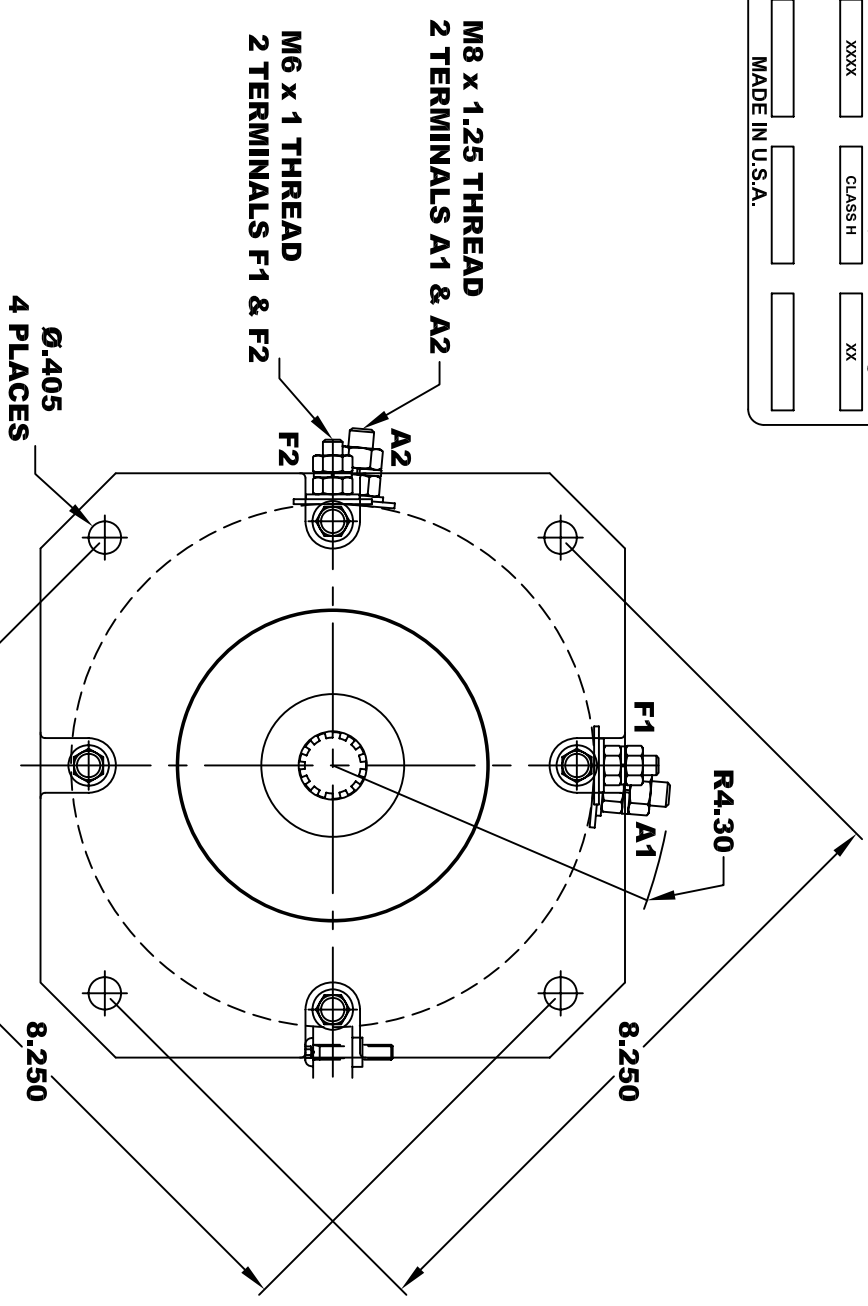
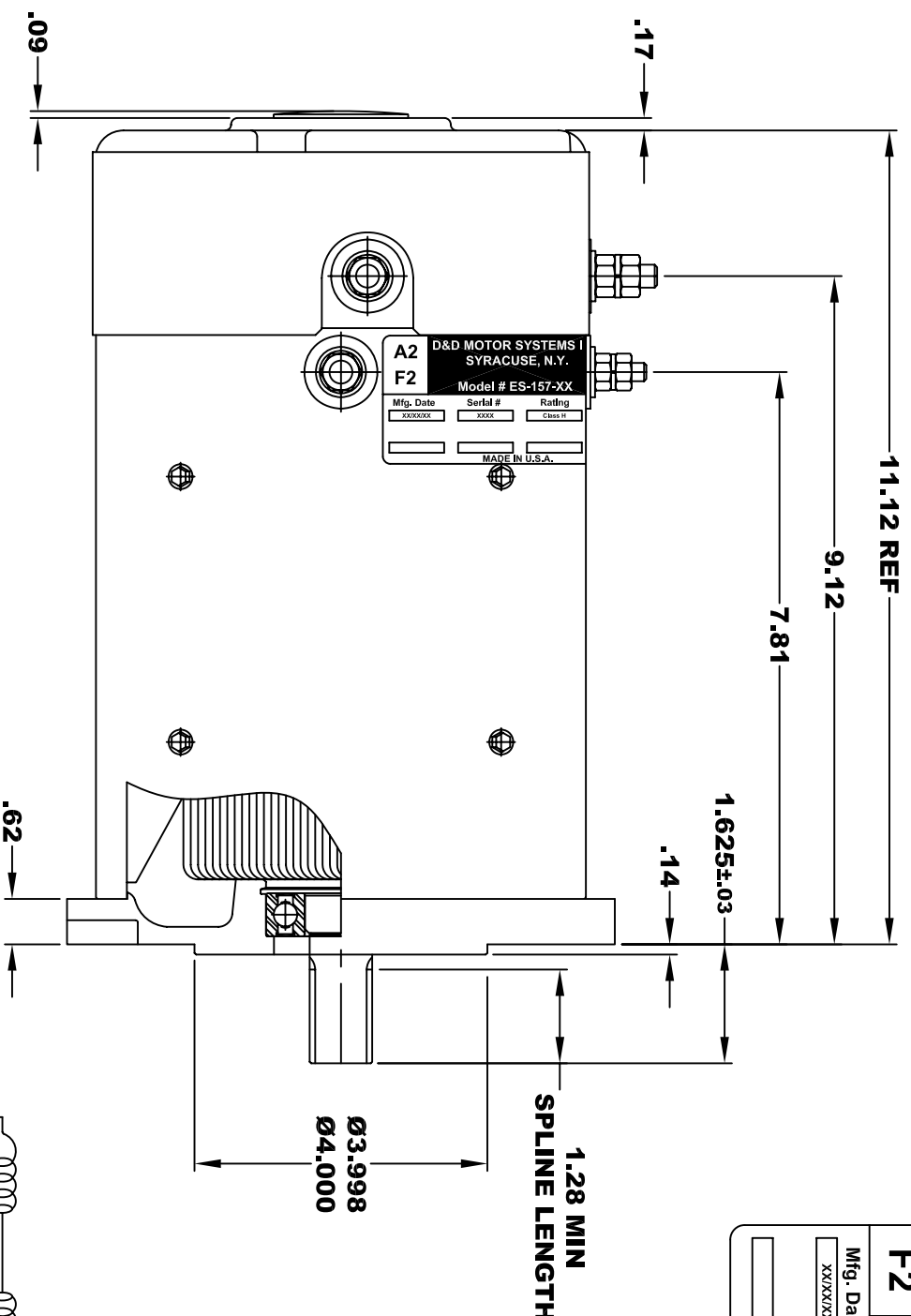


A2	D&D MOTOR SYSTEMS INC.			A1
F2	SYRACUSE N.Y.			F1
Model # ES-157-XX				
Mfg. Date	Serial #	Rating	Voltage	
XXXXXX	XXXX	CLASS H	XX	
MADE IN U.S.A.				

**TORQUE SPECIFICATION FOR
POWER CABLE SECURING TOP NUTS**
M8 x 1.25 (A1 / A2) - 110 IN / LBS MAX
M6 x 1 (F1 / F2) - 50 IN / LBS MAX



MOTOR WIRING CONNECTIONS:
CW ROTATION DRIVE END
CONNECT A1 & F1 TO ONE BATTERY TERMINAL
CONNECT A2 & F2 TO OTHER BATTERY TERMINAL
CCW ROTATION DRIVE END
SWITCH F1 & F2 CONNECTIONS

EXTERNAL INVOLUTE SPLINE DATA	
STANDARD	ANSI B92.1 - 1996
ROOT TYPE	FLAT
FIT TYPE	SIDE
NUMBER OF TEETH	13
SPLINE PITCH	16 / 32
PRESSURE ANGLE	30°
MAJOR DIAMETER	.873±.001
CIRCULAR TOOTH THICKNESS	
TOLERANCE CLASS FIT	5
MAX EFFECTIVE	0.0982
MIN ACTUAL	0.0956

MOTOR WEIGHT: XX LBS
CLASS "H" INSULATION
PERFORMANCE SPEC: XX

THIS PRINT IS THE PROPERTY OF D&D MOTOR SYSTEMS INC.
DO NOT SCALE
WORK TO DIMENSIONS
TOLERANCES UNLESS OTHERWISE SPECIFIED ARE AS FOLLOWS

.XX _____ .01
.XXX _____ .005
.XX ROUGH CASTING _____ .03
HOLES _____ -.001 / +.006
ANGLES _____ 0°30"

D & D MOTOR SYSTEMS INC			
MOTOR OUTLINE			
SIZE	DRAWN DATE	RELEASE DATE	DWG NO. / PART NO.
B	6-27-13		ES-157-XX
SCALE	STF	DRAWN BY	MJG
			REV DATE