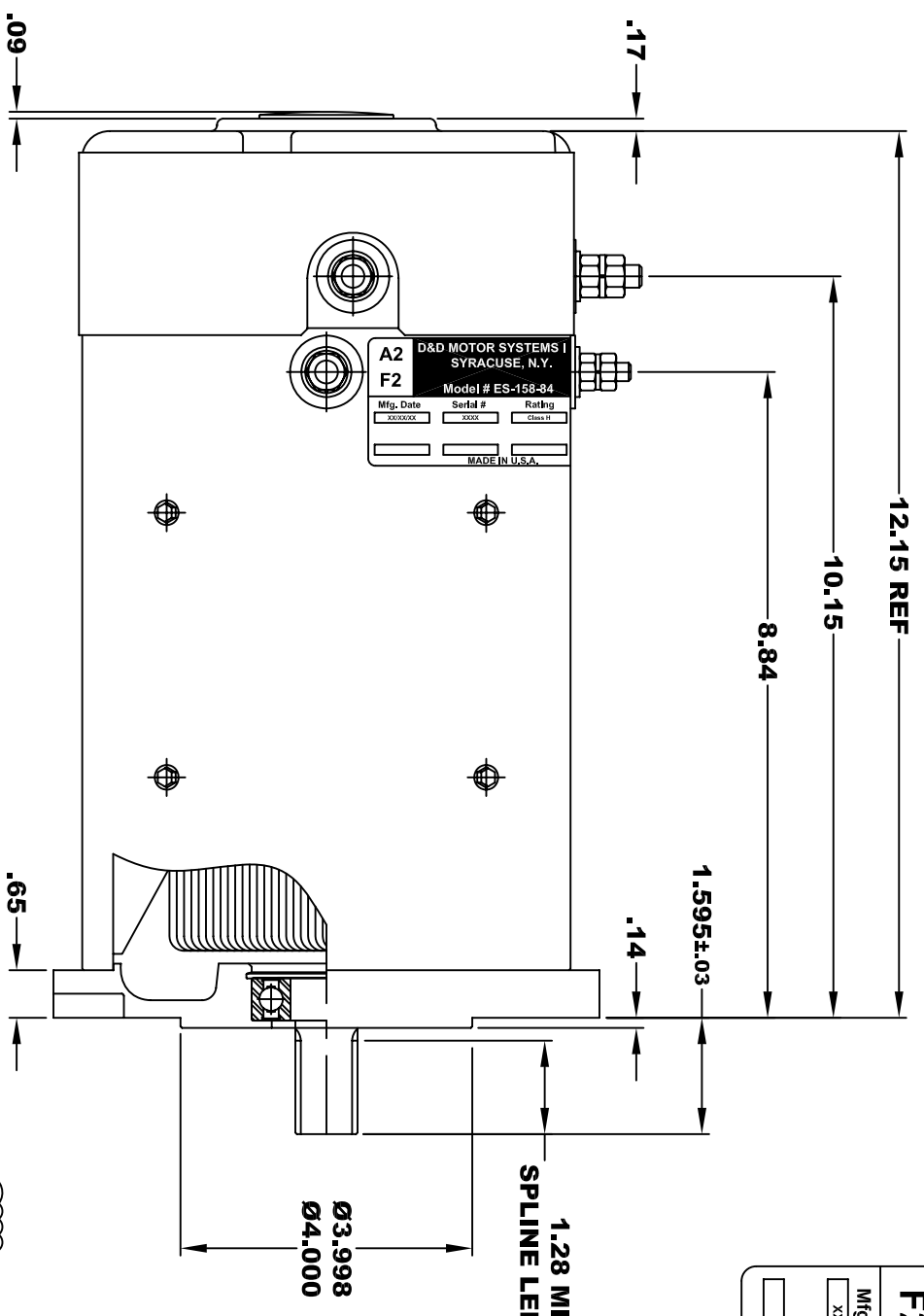
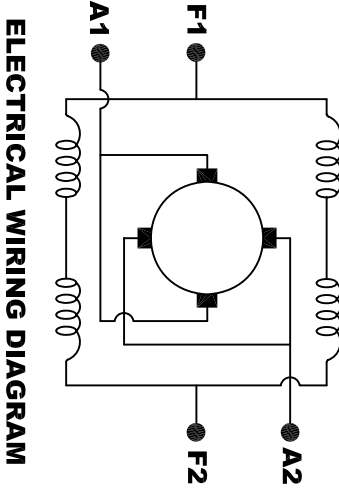
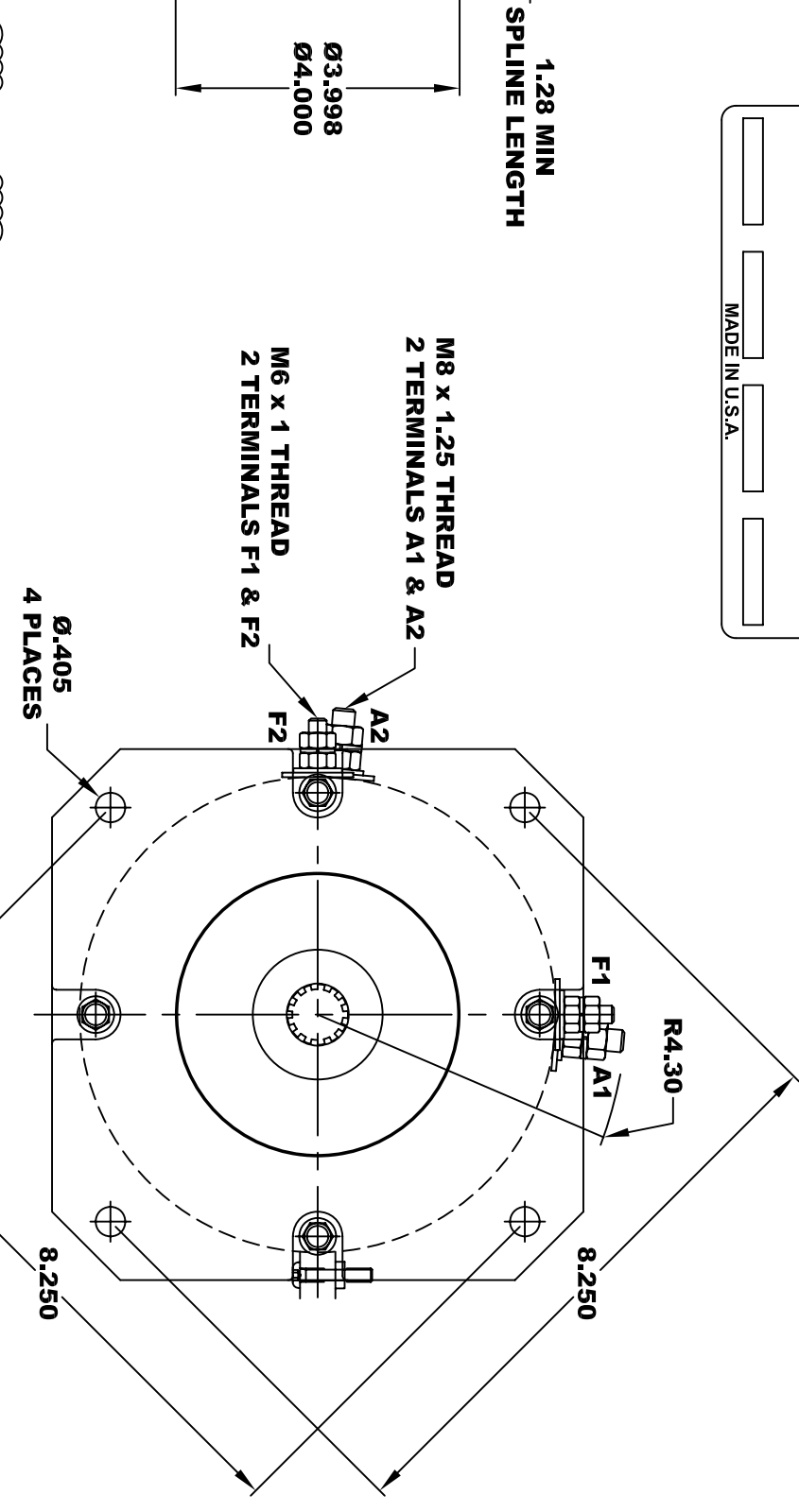


R1 REVISE DIMENSIONS



D&D MOTOR SYSTEMS INC.		A1	
SYRACUSE N.Y.		F1	
Model # ES-158-84			
Mfg. Date	Serial #	Rating	Voltage
XXXXXX	XXXX	CLASS H	XX
MADE IN U.S.A.			

TORQUE SPECIFICATION FOR POWER CABLE SECURING TOP NUTS
M8 x 1.25 (A1 / A2) - 110 IN / LBS MAX
M6 x 1 (F1 / F2) - 50 IN / LBS MAX



MOTOR WIRING CONNECTIONS:
CW ROTATION DRIVE END
CONNECT A1 & F1 TO ONE BATTERY TERMINAL
CONNECT A2 & F2 TO OTHER BATTERY TERMINAL
CCW ROTATION DRIVE END
SWITCH F1 & F2 CONNECTIONS

EXTERNAL INVOLUTE SPLINE DATA	
STANDARD	ANSI B92.1 - 1996
ROOT TYPE	FLAT
FIT TYPE	SIDE
NUMBER OF TEETH	13
SPLINE PITCH	16 / 32
PRESSURE ANGLE	30°
MAJOR DIAMETER	.873±.001
CIRCULAR TOOTH THICKNESS	
TOLERANCE CLASS FIT	5
MAX EFFECTIVE	0.0982
MIN ACTUAL	0.0956

MOTOR WEIGHT: XX LBS
CLASS "H" INSULATION
PERFORMANCE SPEC: 84

THIS PRINT IS THE PROPERTY OF D&D MOTOR SYSTEMS INC.
 DO NOT SCALE
 WORK TO DIMENSIONS
 TOLERANCES UNLESS OTHERWISE SPECIFIED ARE AS FOLLOWS
 .XX _____ .01
 .XXX _____ .005
 .XX ROUGH CASTING _____ .03
 HOLES _____ -.001 / +.006
 ANGLES _____ 0°30"

D & D MOTOR SYSTEMS INC			
MOTOR OUTLINE			
SIZE	DRAWN DATE	RELEASE DATE	DWG NO. / PART NO.
B	1-3-13		ES-158-84
SCALE	STF	DRAWN BY	REV DATE
		MJG	4-25-13