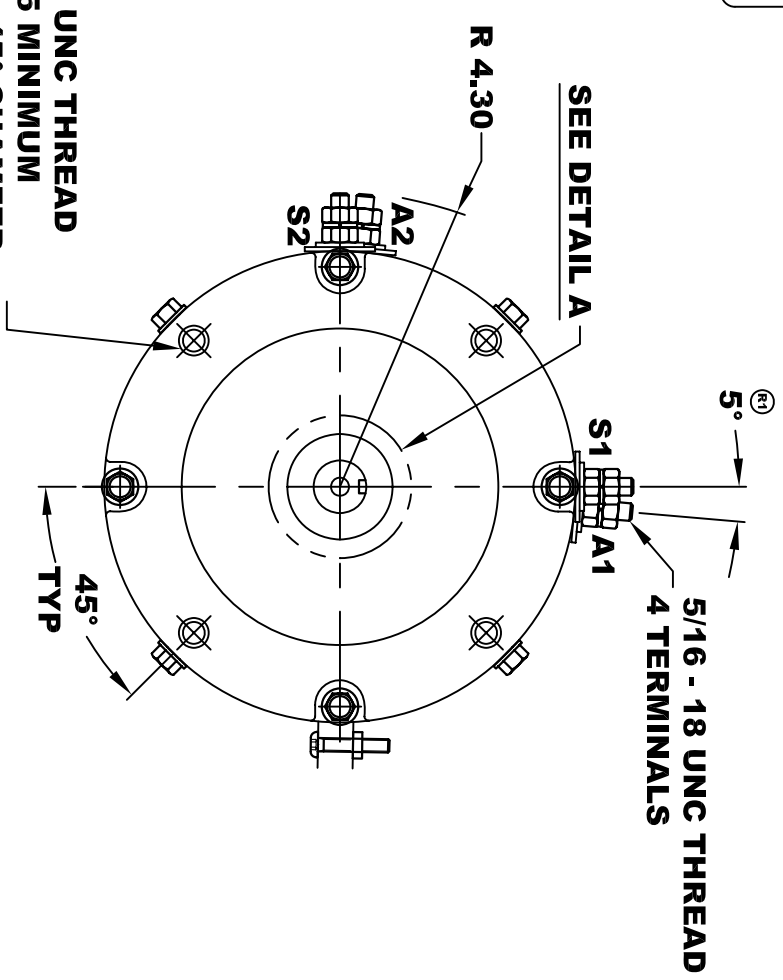


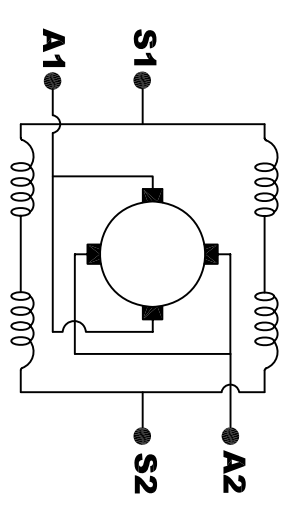
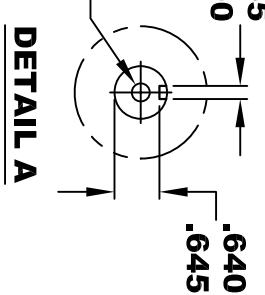
D&D MOTOR SYSTEMS INC.		SYRACUSE N.Y.		Model # ES-15B	
A2	S2	A1	S1	Mfg. Date	Serial #
				XXXXXX	XXXX
				Voltage	Current
				XX	XXXX
				Rating	Duty
				CLASS-H	S2-60 MIN
				R.P.M.	H.P.
				XXXX	XX
				MADE IN U.S.A.	

**TORQUE SPECIFICATION FOR
POWER CABLE SECURING TOP NUTS
5/16-18 UNC - 110 IN / LBS MAX**



**3/8 - 16 UNC THREAD
↓ .65 MINIMUM
.03-.05 X 45° CHAMFER
4 PLACES, ON A Ø5.875 B. C.**

**5/16 - 18 UNC THREAD
↓ .75**



ELECTRICAL WIRING DIAGRAM

MOTOR WIRING CONNECTIONS:
CW ROTATION DRIVE END
 CONNECT S2 & A1 TOGETHER
 CONNECT S1 TO BATTERY TERMINAL
CCW ROTATION DRIVE END
 CONNECT A2 TO OTHER BATTERY TERMINAL
 SWITCH S1 & S2 CONNECTIONS

**MOTOR WEIGHT: 63 LBS
CLASS "H" INSULATION
PERFORMANCE SPEC: 6**

THIS PRINT IS THE PROPERTY OF D&D MOTOR SYSTEMS INC.
 DO NOT SCALE
 WORK TO DIMENSIONS
 TOLERANCES UNLESS OTHERWISE SPECIFIED ARE AS FOLLOWS
 .XX _____ .01
 .XXX _____ .005
 .XX ROUGH CASTING _____ .03
 HOLES _____ -.001 / +.006
 ANGLES _____ 0°30"

D & D MOTOR SYSTEMS INC

MOTOR OUTLINE

SIZE	DRAWN DATE	RELEASE DATE	DWG NO. / PART NO.	REV
B	5-21-03		ES-15B	R1
SCALE	STF	DRAWN BY	MJG	REV DATE
				11-3-03