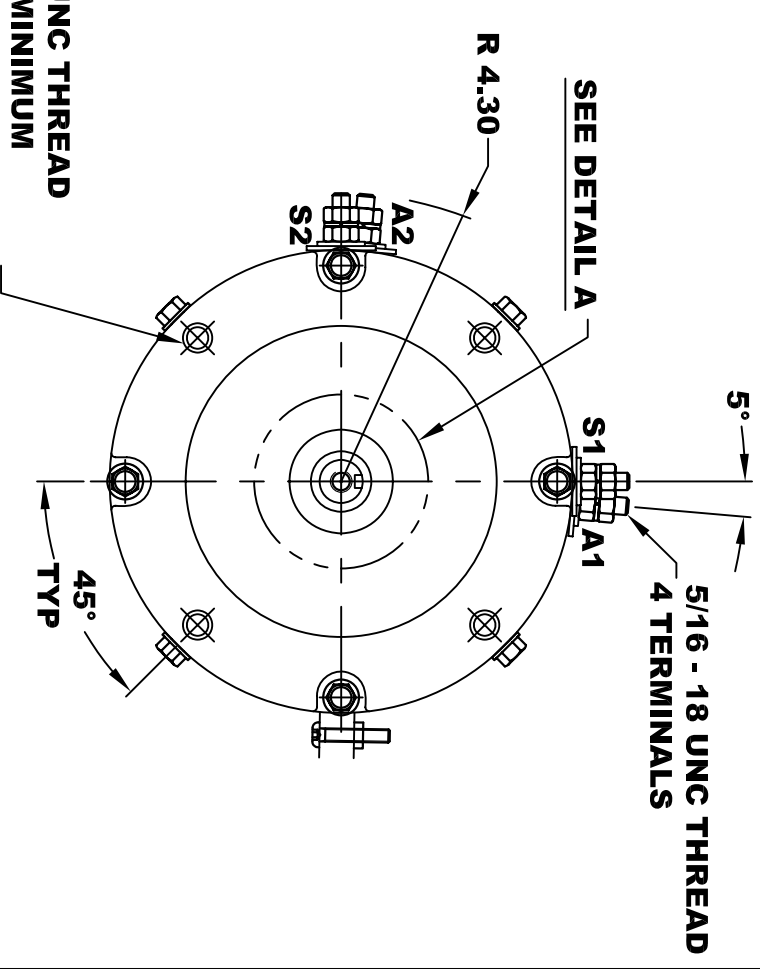
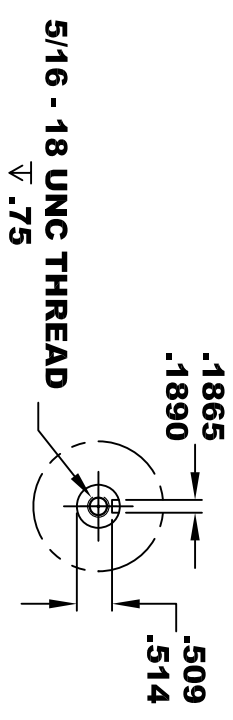
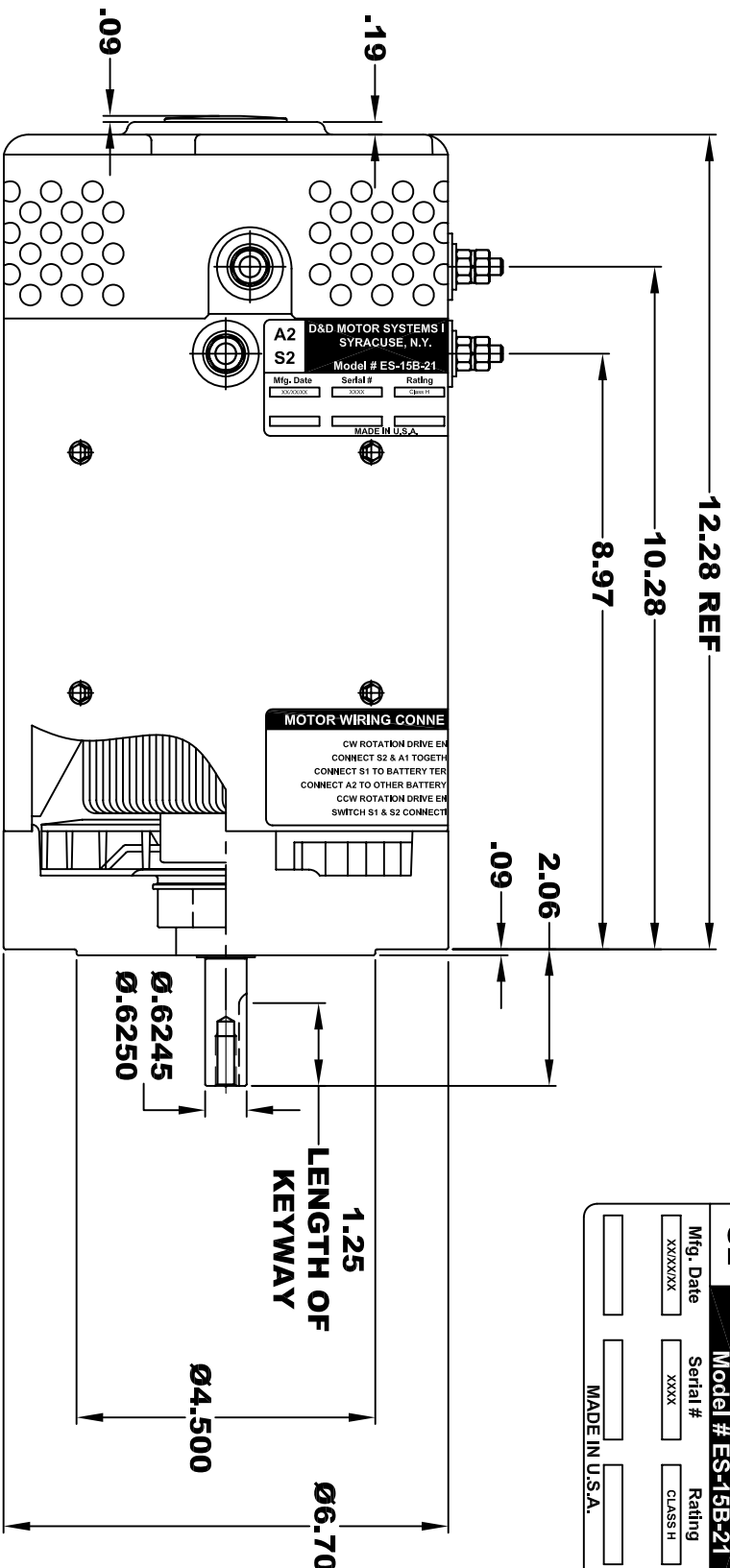


<b>D&amp;D MOTOR SYSTEMS INC.</b>			
<b>A2</b>	<b>SYRACUSE N.Y.</b>		<b>A1</b>
<b>S2</b>	<b>Model # ES-15B-21</b>		<b>S1</b>
Mfg. Date	Serial #	Rating	Voltage
XXXXXX	XXXX	CLASS H	24 / 36 / 48
MADE IN U.S.A.			



**TORQUE SPECIFICATION FOR  
POWER CABLE SECURING TOP NUTS  
5/16-18 UNC - 110 IN / LBS MAX**

**3/8 - 16 UNC THREAD  
▽ .65 MINIMUM  
.03-.05 x 45° CHAMFER  
4 PLACES, ON A Ø5.875 B. C.**

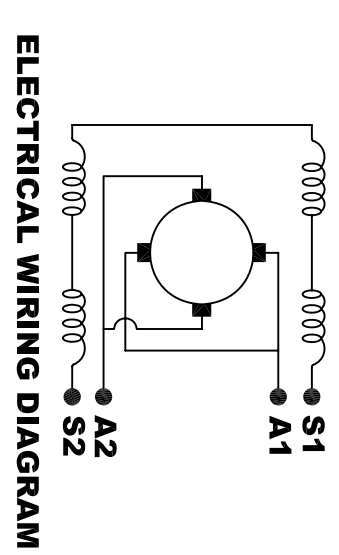
**MOTOR WEIGHT: 63 LBS  
CLASS "H" INSULATION  
PERFORMANCE SPEC: 21**

**D & D MOTOR SYSTEMS INC**

**MOTOR OUTLINE**

THIS PRINT IS THE PROPERTY OF D&D MOTOR SYSTEMS INC.  
DO NOT SCALE  
WORK TO DIMENSIONS  
TOLERANCES UNLESS OTHERWISE SPECIFIED ARE AS FOLLOWS  
.XX \_\_\_\_\_ .01  
.XXX \_\_\_\_\_ .005  
.XX ROUGH CASTING \_\_\_\_\_ .03  
HOLES \_\_\_\_\_ -.001 / +.006  
ANGLES \_\_\_\_\_ 0°30"

SIZE	DRAWN DATE	RELEASE DATE	DWG NO. / PART NO.	REV
B	7-20-09		ES-15B-21	
SCALE	STF	DRAWN BY	MJG	REV DATE



**MOTOR WIRING CONNECTIONS:**  
**CW ROTATION DRIVE END**  
**CONNECT S2 & A1 TOGETHER**  
**CONNECT S1 TO BATTERY TERMINAL**  
**CCW ROTATION DRIVE END**  
**CONNECT A2 TO OTHER BATTERY TERMINAL**  
**CONNECT S1 & S2 CONNECTIONS**

**ELECTRICAL WIRING DIAGRAM**