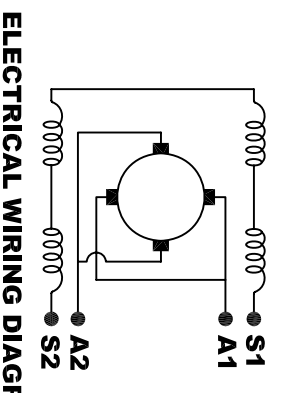
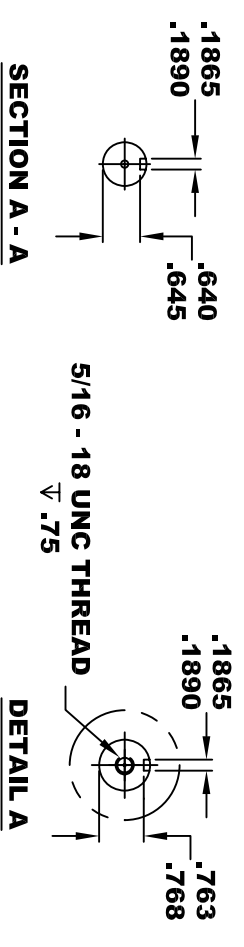
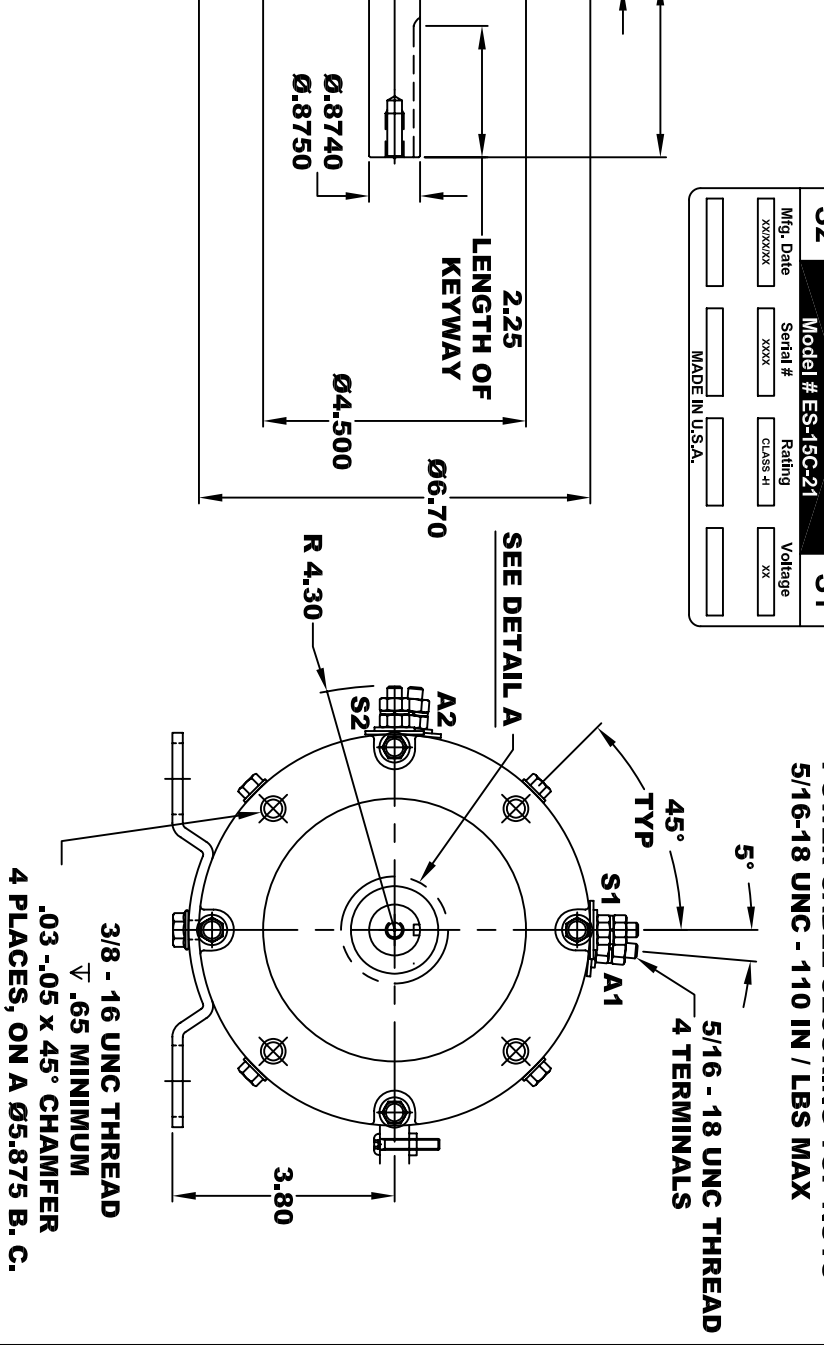
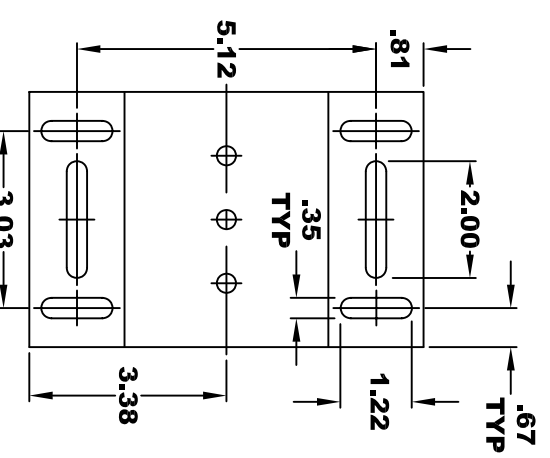


D&D MOTOR SYSTEMS INC.		A2	A1
SYRACUSE N.Y.		S2	S1
Model # ES-15C-21			
Mfg. Date	Serial #	Rating	Voltage
XXXXXX	XXXX	CLASS 41	XX
MADE IN U.S.A.			



MOTOR WIRING CONNECTIONS:
CW ROTATION DRIVE END
 CONNECT S2 & A1 TOGETHER
 CONNECT S1 TO BATTERY TERMINAL
CCW ROTATION DRIVE END
 SWITCH S1 & S2 CONNECTIONS



MOTOR WEIGHT: 66 LBS
CLASS "H" INSULATION
PERFORMANCE SPEC: 21

THIS PRINT IS THE PROPERTY OF D&D MOTOR SYSTEMS INC.
 DO NOT SCALE
 WORK TO DIMENSIONS
 TOLERANCES UNLESS OTHERWISE SPECIFIED ARE AS FOLLOWS
 .XX _____ .01
 .XXX _____ .005
 .XX ROUGH CASTING _____ .03
 HOLES _____ -.001 / +.006
 ANGLES _____ 0°30"

D & D MOTOR SYSTEMS INC			
MOTOR OUTLINE			
SIZE	DRAWN DATE	RELEASE DATE	DWG NO. / PART NO.
B	8-19-10		ES-15C-21
SCALE	STF	DRAWN BY	MJG
			REV DATE