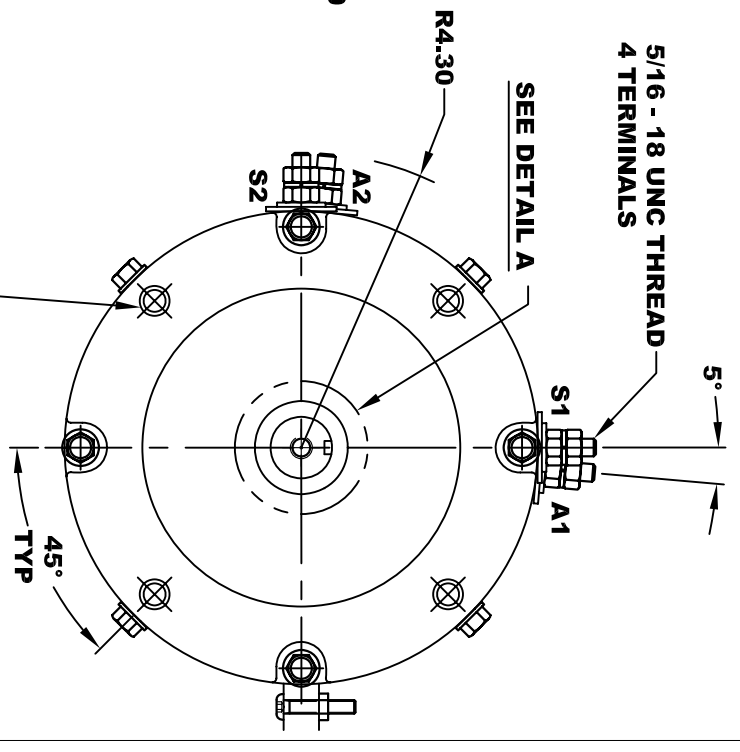
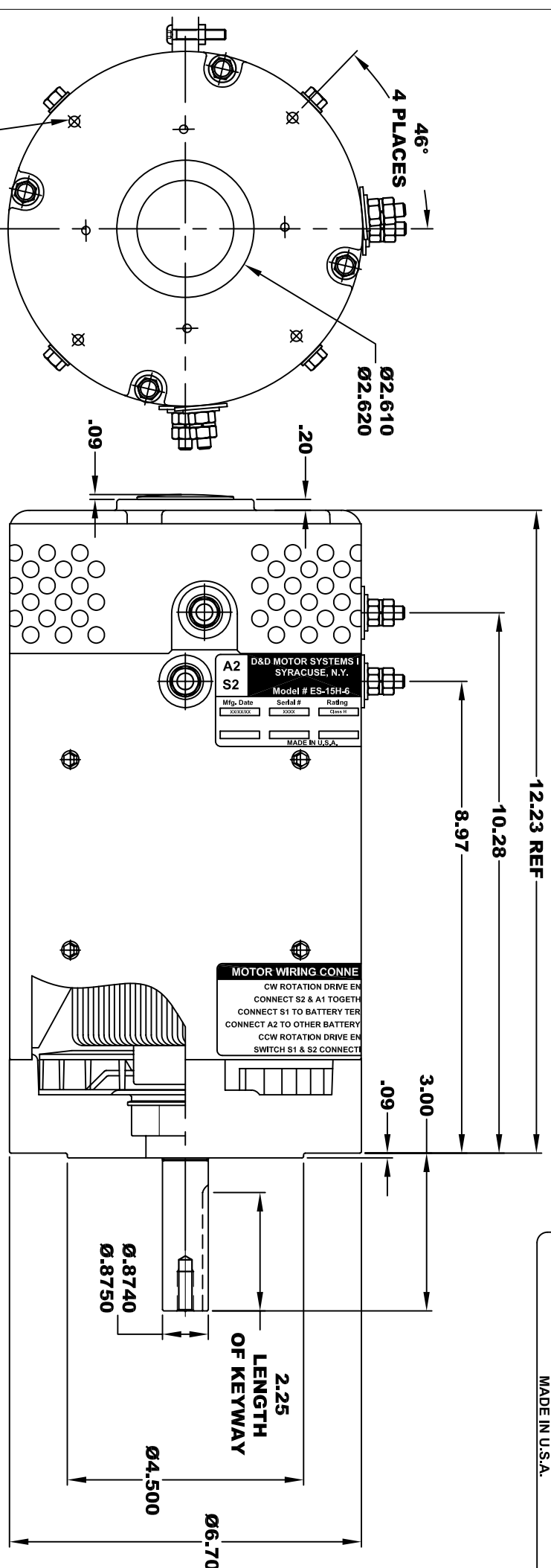


**TORQUE SPECIFICATION FOR
POWER CABLE SECURING TOP NUTS
5/16-18 UNC - 110 IN / LBS MAX**

A2	D&D MOTOR SYSTEMS INC.			A1
S2	SYRACUSE N.Y.			S1
Model # ES-15H-6				
Mfg. Date XX/XX/XX	Serial # XXXX	Rating CLASS-H	Voltage XX	
MADE IN U.S.A.				

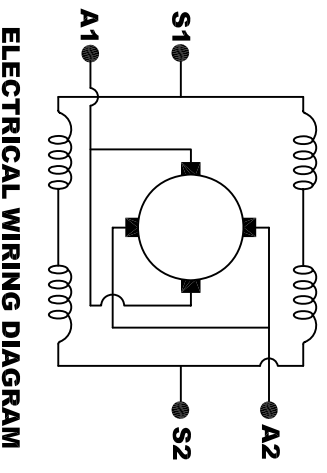


**1/4-20 UNC THREAD
TAPPED THRU
EQUALLY SPACED
ON A Ø5.875 B.C.
4 PLACES**



**3/8 - 16 UNC THREAD
TYP .65 MINIMUM
.03 -.05 x 45° CHAMFER
4 PLACES, ON A Ø5.875 B. C.**

**MOTOR WEIGHT: 63 LBS
CLASS "H" INSULATION
PERFORMANCE SPEC: 6**



**MOTOR WIRING CONNECTIONS:
CW ROTATION DRIVE END
CONNECT S2 & A1 TOGETHER
CONNECT S1 TO BATTERY TERMINAL
CCW ROTATION DRIVE END
CONNECT A2 TO OTHER BATTERY TERMINAL
SWITCH S1 & S2 CONNECTIONS**

THIS PRINT IS THE PROPERTY OF D&D MOTOR SYSTEMS INC.
DO NOT SCALE
WORK TO DIMENSIONS
TOLERANCES UNLESS OTHERWISE SPECIFIED ARE AS FOLLOWS
.XX .01
.XXX .005
.XX ROUGH CASTING .03
HOLES -.001 / +.006
ANGLES 0°30"

D & D MOTOR SYSTEMS INC			
MOTOR OUTLINE			
SIZE	DRAWN DATE	RELEASE DATE	DWG NO. / PART NO.
B	6-25-07		ES-15H-6
SCALE	STF	DRAWN BY	REV
		MJG	DATE