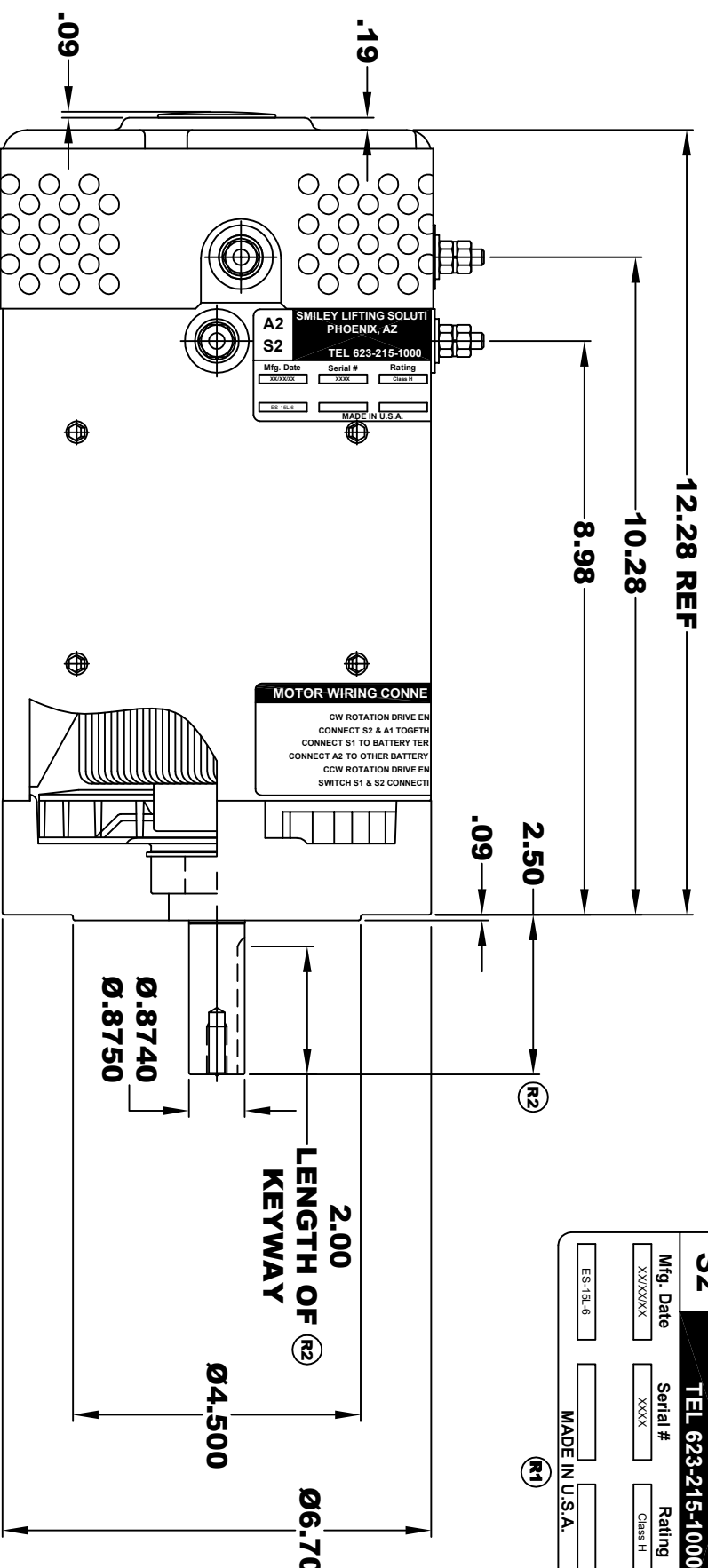


**TORQUE SPECIFICATION FOR
POWER CABLE SECURING TOP NUTS
5/16-18 UNC - 110 IN / LBS MAX**

SMILEY LIFTING SOLUTIONS			
A2	PHOENIX, AZ		A1
S2	TEL 623-215-1000		S1
Mfg. Date	Serial #	Rating	Voltage
XXXXXX	XXXX	Class H	36 / 48 / 72
ES-15L-6		MADE IN U.S.A.	

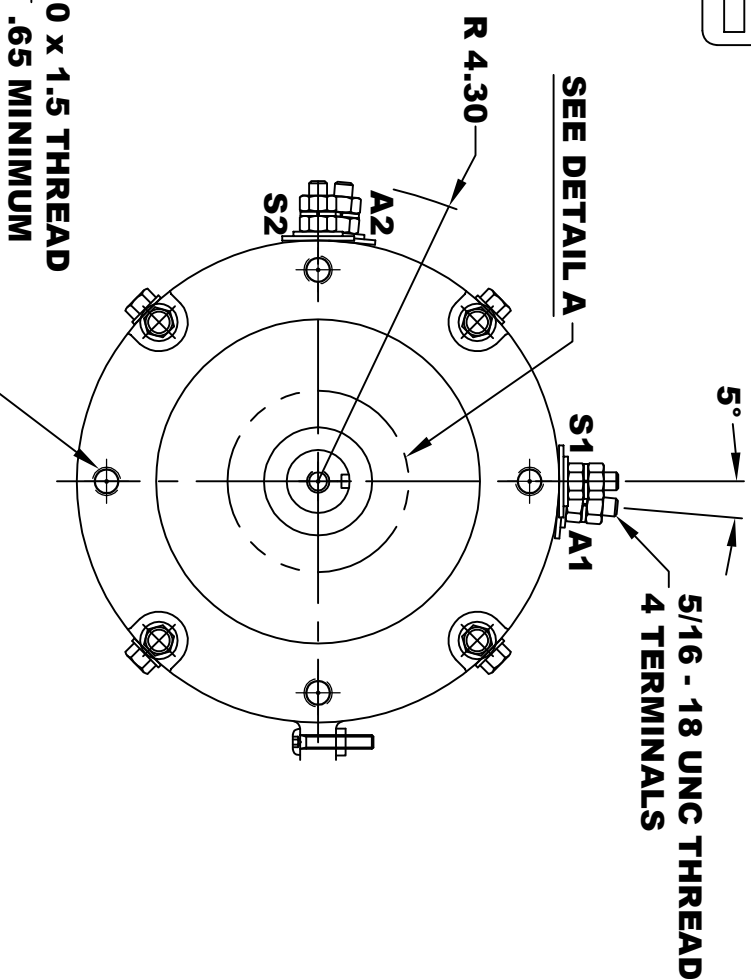


**M10 x 1.5 THREAD
↓ .65 MINIMUM
.03-.05 x 45° CHAMFER
4 PLACES, ON A Ø5.875 B. C.**

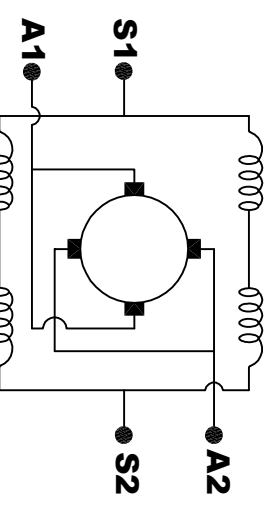
DRAFT

**5/16 - 18 UNC THREAD
↓ .75**

DETAIL A



**MOTOR WEIGHT: 63 LBS
CLASS "H" INSULATION
PERFORMANCE SPEC: 6**



ELECTRICAL WIRING DIAGRAM

MOTOR WIRING CONNECTIONS:
CW ROTATION DRIVE END
 CONNECT S2 & A1 TOGETHER
 CONNECT S1 TO BATTERY TERMINAL
CCW ROTATION DRIVE END
 CONNECT A2 TO OTHER BATTERY TERMINAL
 SWITCH S1 & S2 CONNECTIONS

THIS PRINT IS THE PROPERTY OF D&D MOTOR SYSTEMS INC.
 DO NOT SCALE
 WORK TO DIMENSIONS
 TOLERANCES UNLESS OTHERWISE SPECIFIED ARE AS FOLLOWS
 .XX .01
 .XXX .005
 .XX ROUGH CASTING .03
 HOLES .001 / +.006
 ANGLES 0.30"

D & D MOTOR SYSTEMS INC			
MOTOR OUTLINE			
SIZE	DRAWN DATE	RELEASE DATE	DWG NO. / PART NO.
B	7-19-17		ES-15L-6
SCALE	STF	DRAWN BY	MJG
			REV DATE
			R2 4-10-18