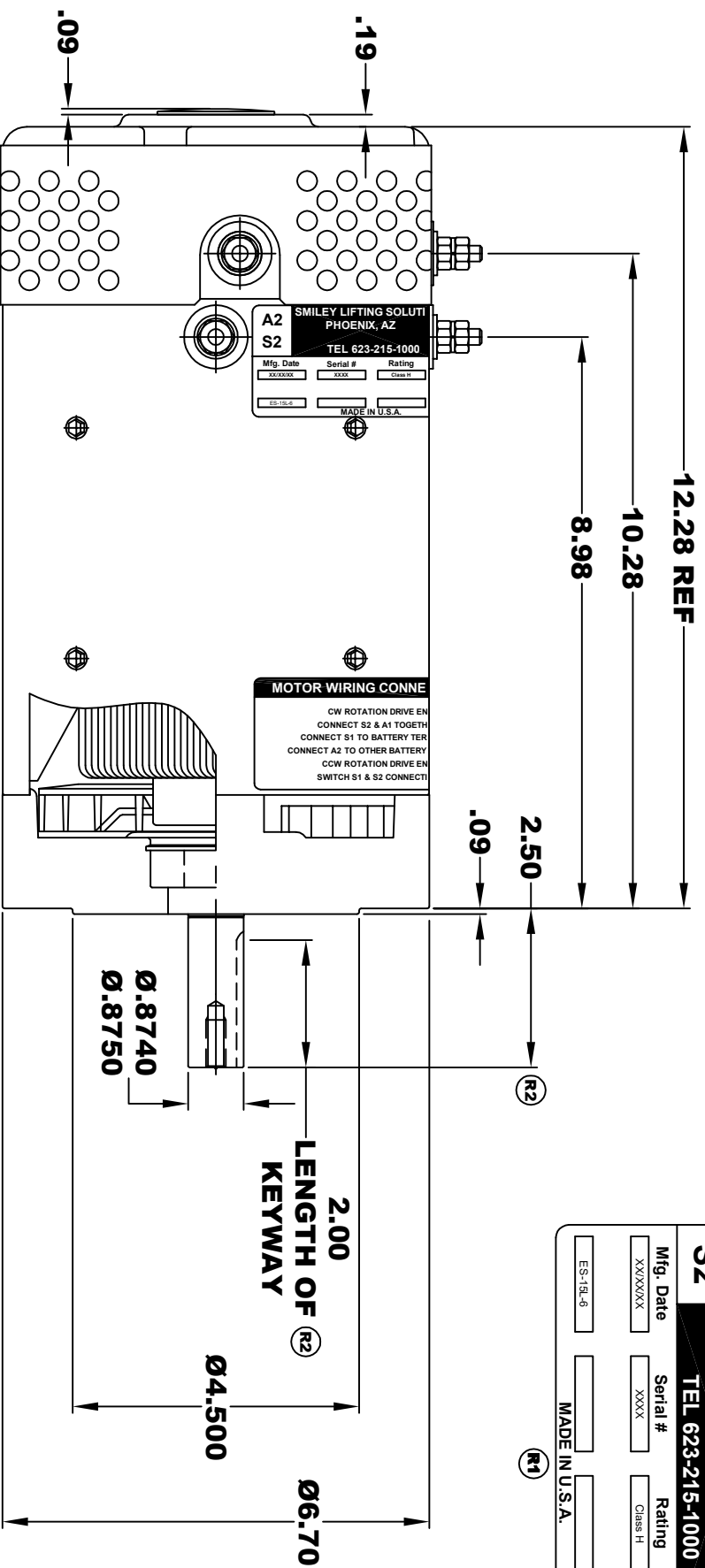
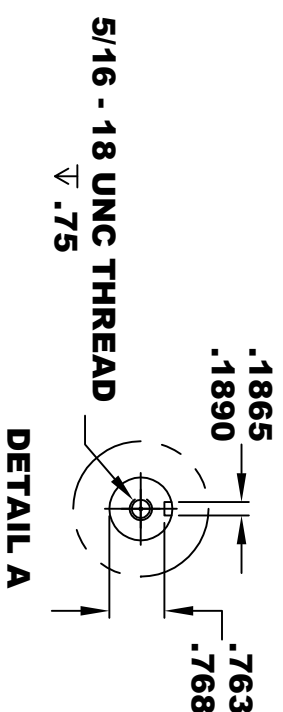
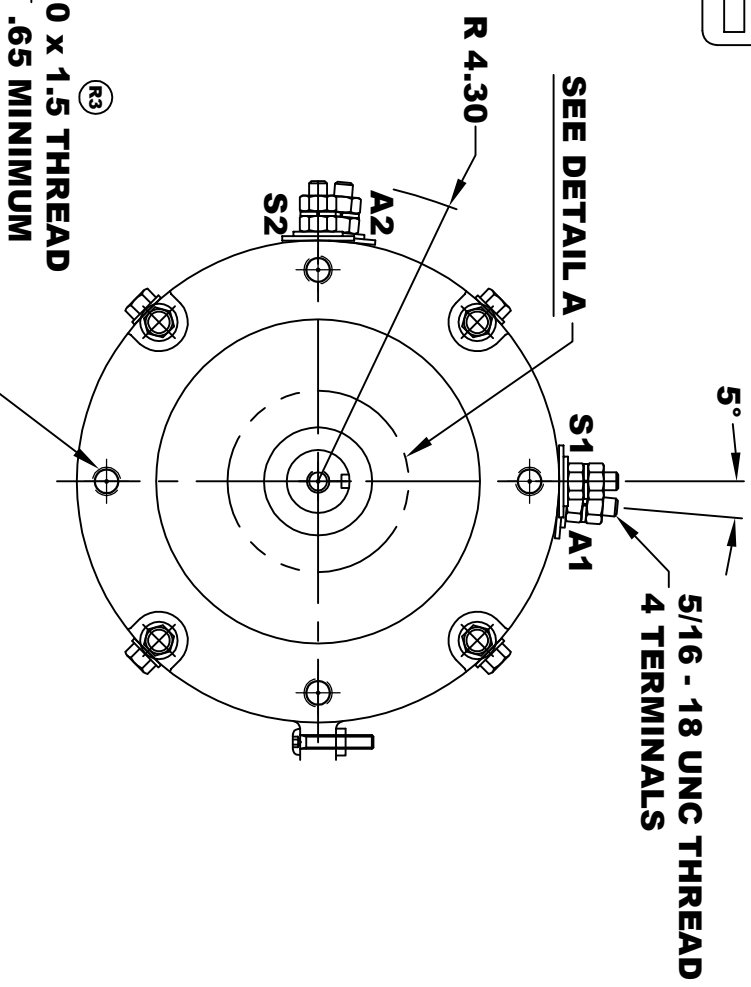


<b>SMILEY LIFTING SOLUTIONS</b>			
PHOENIX, AZ			
TEL 623-215-1000			
<b>A2</b>	<b>S2</b>	<b>A1</b>	<b>S1</b>
Mfg. Date	Serial #	Rating	Voltage
XXXXXX	XXXX	Class H	36 / 48 / 72
ES-15L-6		MADE IN U.S.A.	

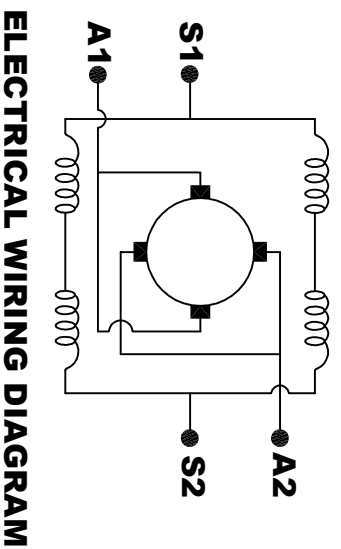
**TORQUE SPECIFICATION FOR  
POWER CABLE SECURING TOP NUTS  
5/16-18 UNC - 110 IN / LBS MAX**



**M10 x 1.5 THREAD**  
 .65 MINIMUM  
 .03-.05 x 45° CHAMFER  
 4 PLACES, ON A Ø5.875 B. C.



**MOTOR WEIGHT: 63 LBS  
CLASS "H" INSULATION  
PERFORMANCE SPEC: 6**



**MOTOR WIRING CONNECTIONS:**  
**CW ROTATION DRIVE END**  
 CONNECT S2 & A1 TOGETHER  
 CONNECT S1 TO BATTERY TERMINAL  
**CCW ROTATION DRIVE END**  
 CONNECT A2 TO OTHER BATTERY TERMINAL  
 SWITCH S1 & S2 CONNECTIONS

THIS PRINT IS THE PROPERTY OF D&D MOTOR SYSTEMS INC.  
 DO NOT SCALE  
 WORK TO DIMENSIONS  
 TOLERANCES UNLESS OTHERWISE SPECIFIED ARE AS FOLLOWS  
 .XX .01  
 .XXX .005  
 .XX ROUGH CASTING .03  
 HOLES .001 / +.006  
 ANGLES 0°30"

<b>D &amp; D MOTOR SYSTEMS INC</b>			
<b>MOTOR OUTLINE</b>			
SIZE	DRAWN DATE	RELEASE DATE	DWG NO. / PART NO.
B	7-19-17		ES-15L-6
SCALE	STF	DRAWN BY	MJG
			REV DATE
			R3 8-20-19