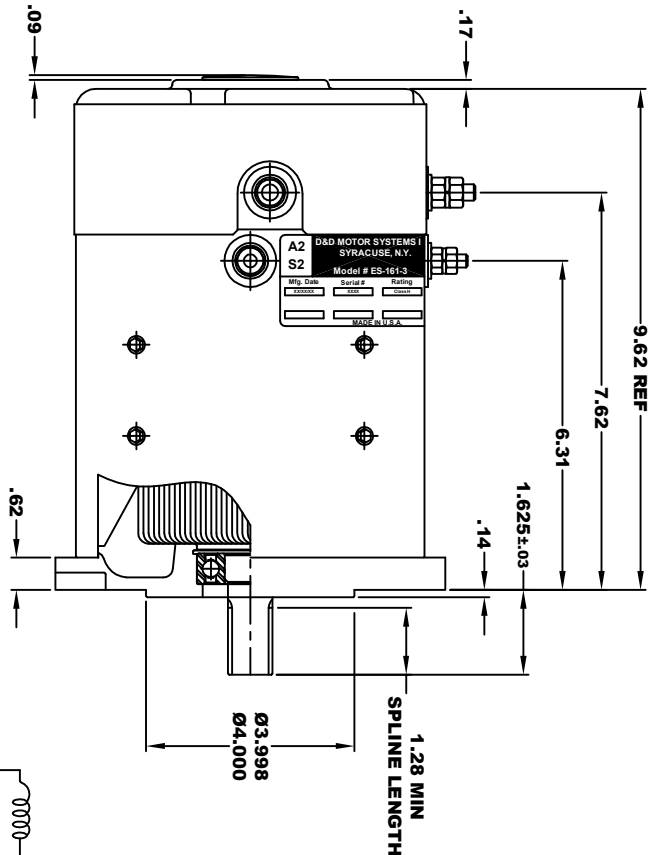
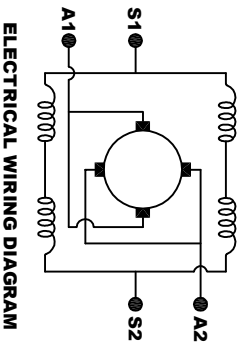


EXTERNAL INVOLUTE SPLINE DATA	
STANDARD	ANSI B92.1 - 1996
FIT TYPE	FLAT
NUMBER OF TEETH	13
SPLINE PITCH	16 / 32
PRESSURE ANGLE	30°
MAJOR DIAMETER	.873±.001
CIRCULAR TOOTH THICKNESS	
TOLERANCE CLASS FIT	5
MAX EFFECTIVE	0.0982
MIN ACTUAL	0.0956

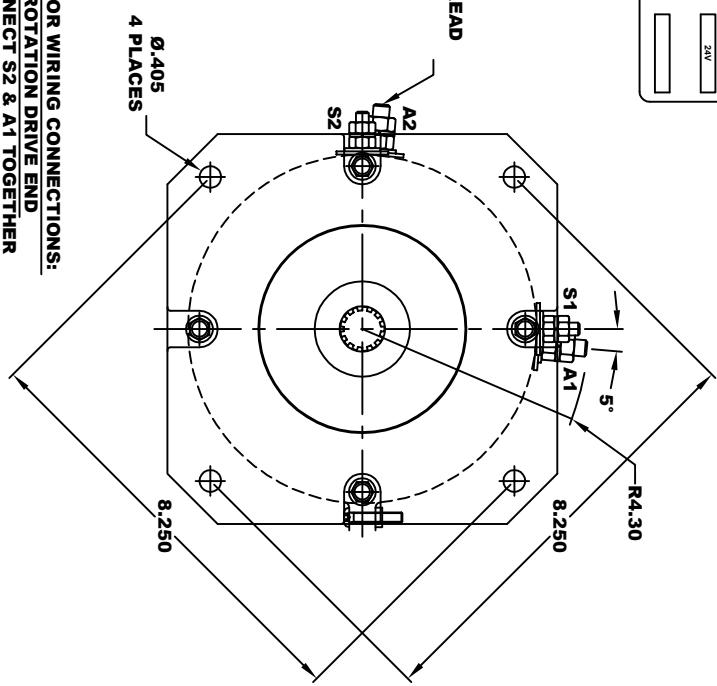


D&D MOTOR SYSTEMS INC. SYRACUSE N.Y.			
A2	S2	A1	S1
Model # ES-161-3			
Mfg. Date	Serial #	Rating	Voltage
XXX/XXX	XXX	CLASS-H	24V
MADE IN U.S.A.			

TORQUE SPECIFICATION FOR
POWER CABLE SECURING TOP NUTS
5/16-18 UNC - 110 IN / LBS MAX



MOTOR WIRING CONNECTIONS:
 CW ROTATION DRIVE END
 CONNECT S2 & A1 TOGETHER
 CONNECT S1 TO BATTERY TERMINAL
 CONNECT A2 TO OTHER BATTERY TERMINAL
 CCW ROTATION DRIVE END
 SWITCH S1 & S2 CONNECTIONS



MOTOR WEIGHT: XX LBS
 CLASS "H" INSULATION
 PERFORMANCE SPEC: 3

THIS PRINT IS THE PROPERTY OF D&D MOTOR SYSTEMS INC.
 DO NOT SCALE
 WORK TO DIMENSIONS
 TOLERANCES UNLESS OTHERWISE SPECIFIED ARE AS FOLLOWS
 .XX—.01
 .XXX—.005
 .XX ROUGH CASTING—.03
 HOLES—.001 / +.006
 ANGLES—0°-30°

D & D MOTOR SYSTEMS INC			
MOTOR OUTLINE			
SIZE	DRAWN DATE	RELEASE DATE	DWG NO. / PART NO.
B	6-27-13		ES-161-3
SCALE	STF	DRAWN BY	REV DATE
		MJG	