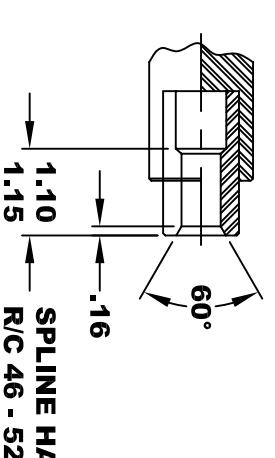
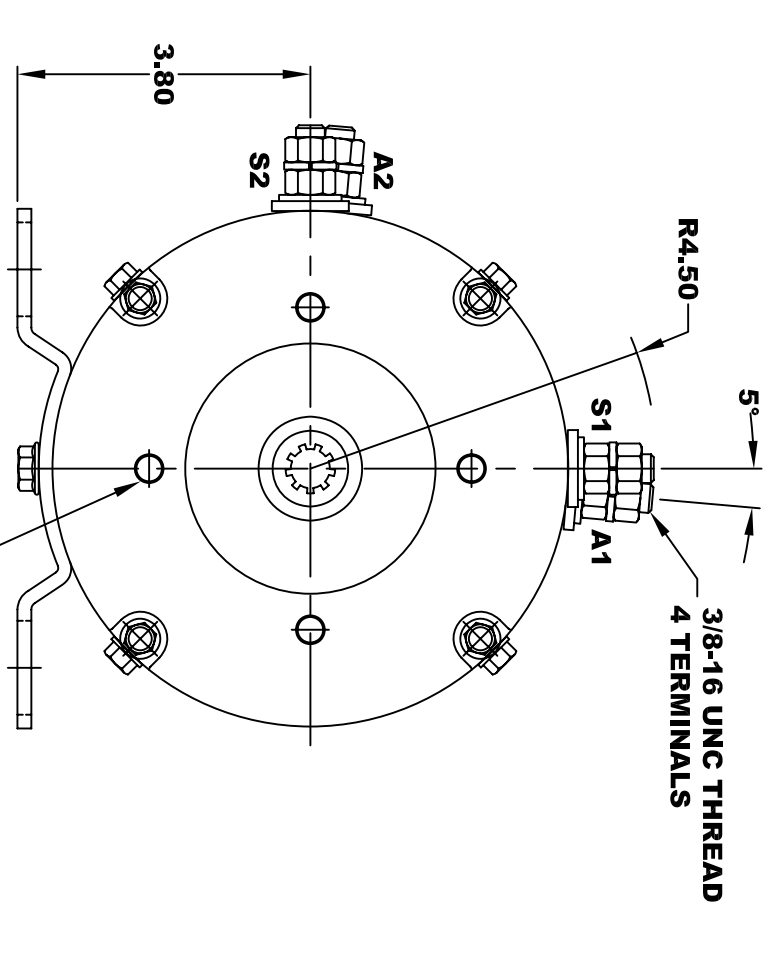
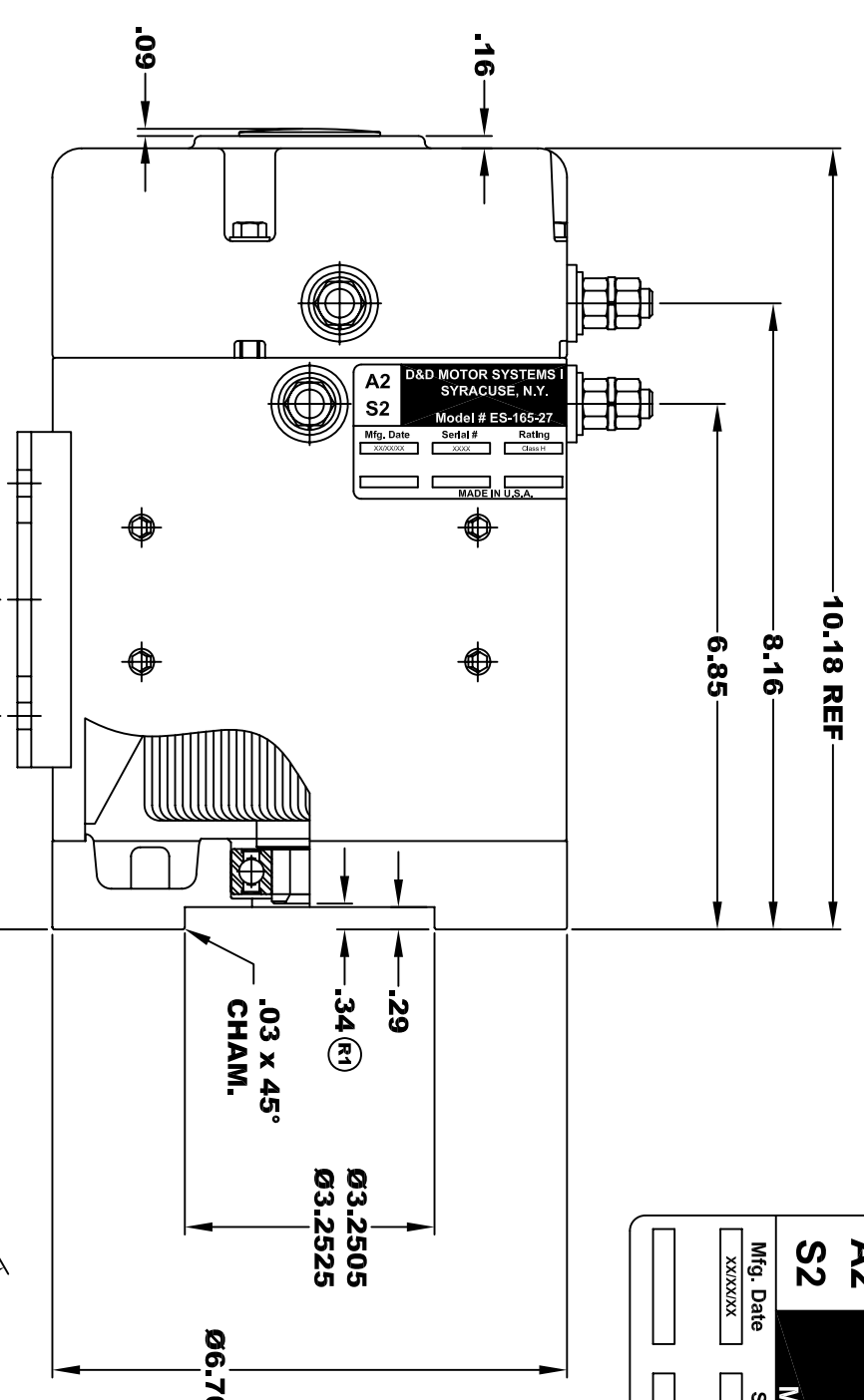


D&D MOTOR SYSTEMS INC.			
SYRACUSE N.Y.			
Model # ES-165-27			
A2	S2	A1	S1
Mfg. Date	Serial #	Rating	Voltage
XX/XX/XX	XXXX	CLASS-H	XX
MADE IN U.S.A.			

TORQUE SPECIFICATION FOR POWER CABLE SECURING TOP NUTS
3/8-16 UNC - 140 IN / LBS MAX

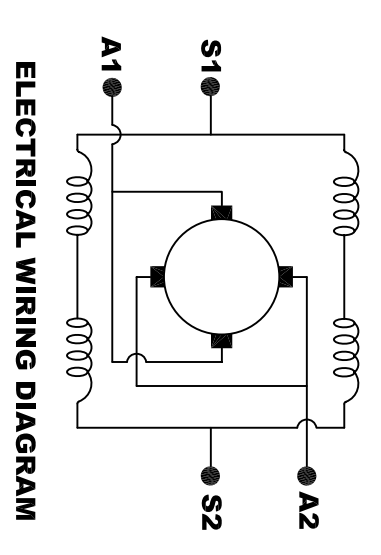


INTERNAL INVOLUTE SPLINE SPECIFICATION
FLAT ROOT SIDE FIT (PER A.N.S.I. B92.1 CLASS 5)

- NO. OF TEETH _____ 9
- SPLINE PITCH _____ 16 / 32
- PRESSURE ANGLE _____ 30°
- BASE Ø _____ .4871 REF
- PITCH Ø _____ .5625 REF
- MAJOR Ø _____ .651
- FORM Ø _____ .629
- MINOR Ø _____ .509 - .514

⊙	.010	A
⊓	.010	B

- CIRCULAR SPACE WIDTH**
- MAX ACTUAL _____ .1008
- MIN EFFECTIVE _____ .0982
- MAX DIMENSION BETWEEN TWO PINS _____ .3972
- PIN Ø _____ .1080



ELECTRICAL WIRING DIAGRAM

MOTOR WIRING CONNECTIONS:
CW ROTATION DRIVE END
CONNECT S2 & A1 TOGETHER
CONNECT S1 TO BATTERY TERMINAL
CONNECT A2 TO OTHER BATTERY TERMINAL
CW ROTATION DRIVE END
SWITCH S1 & S2 CONNECTIONS

MOTOR WEIGHT: XX LBS
CLASS "H" INSULATION
PERFORMANCE SPEC: 27

THIS PRINT IS THE PROPERTY OF D&D MOTOR SYSTEMS INC.
 DO NOT SCALE
 WORK TO DIMENSIONS
 TOLERANCES UNLESS OTHERWISE SPECIFIED ARE AS FOLLOWS
 .XX _____ .01
 .XXX _____ .005
 .XX ROUGH CASTING _____ .03
 HOLES _____ -.001 / +.006
 ANGLES _____ 0°-30°

D & D MOTOR SYSTEMS INC

MOTOR OUTLINE

SIZE	DRAWN DATE	RELEASE DATE	DWG NO. / PART NO.	REV
B	3-18-14		ES-165-27	R1
SCALE	STF	DRAWN BY	MJG	REV DATE
				2-25-16