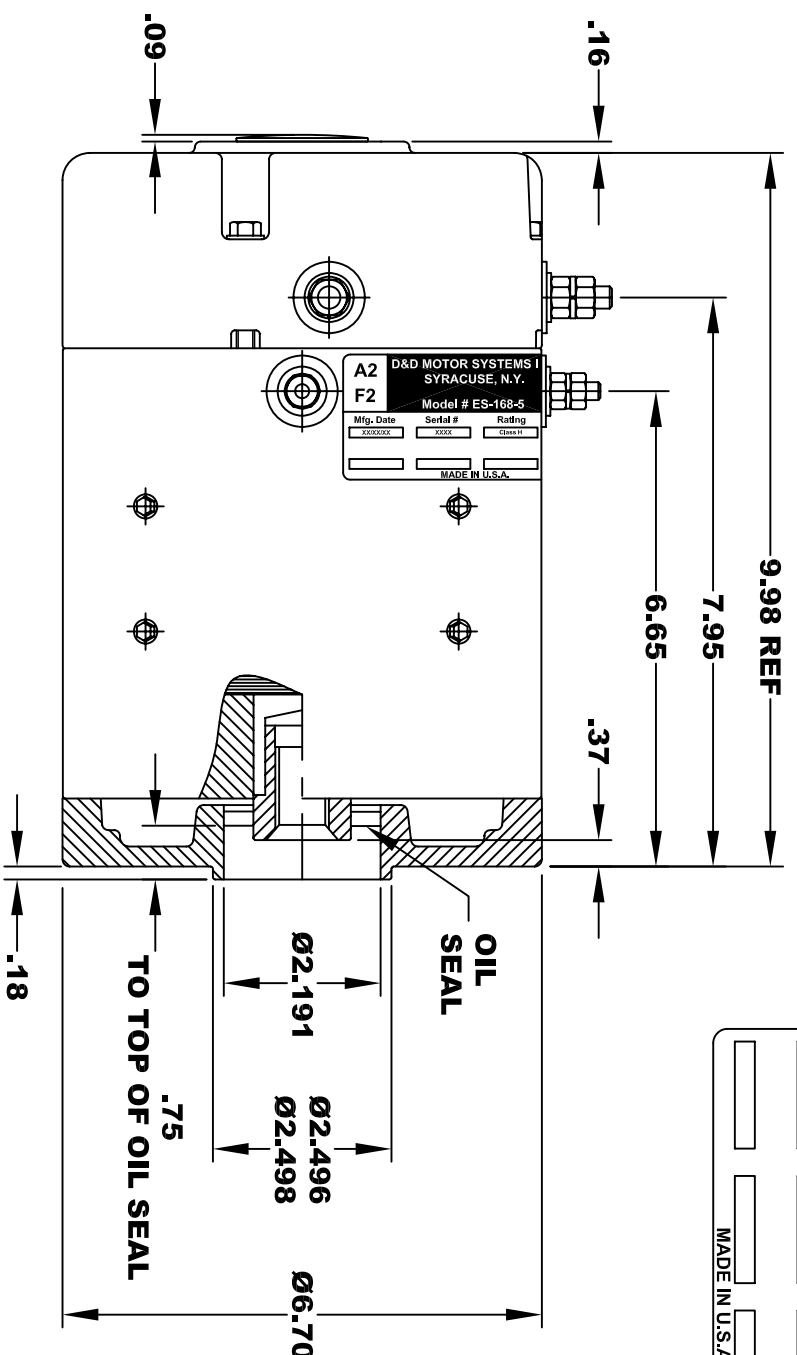
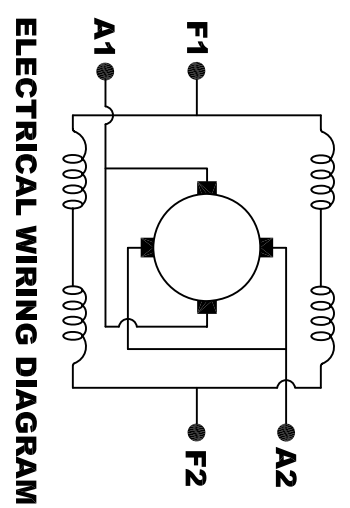
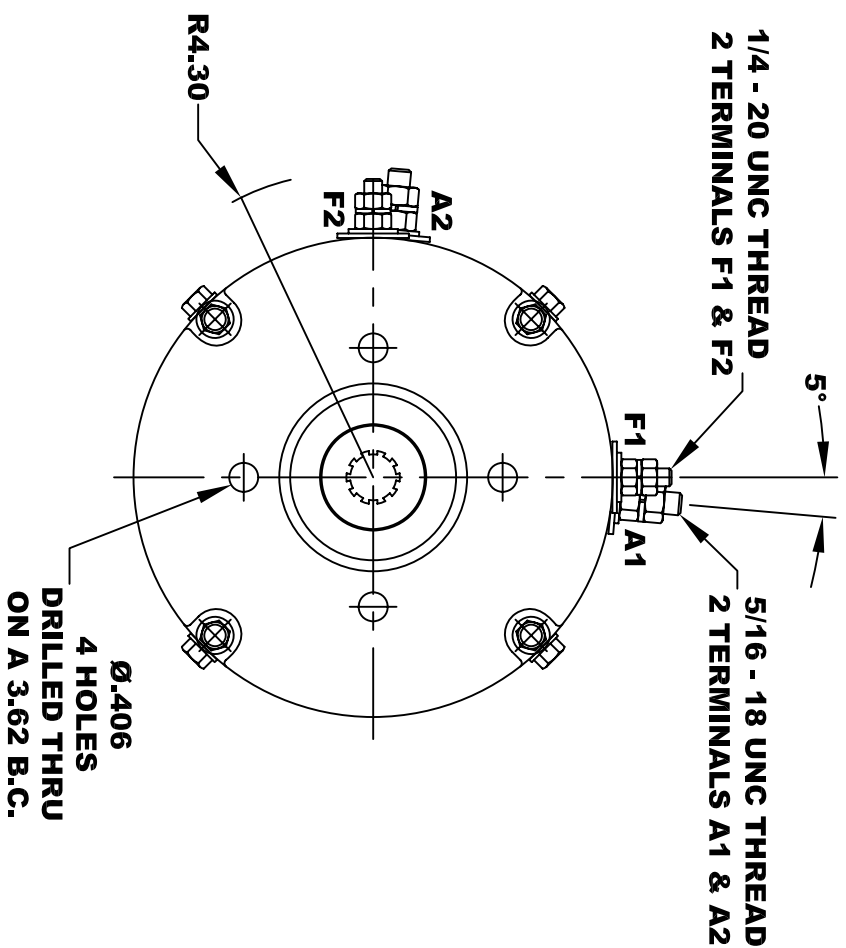


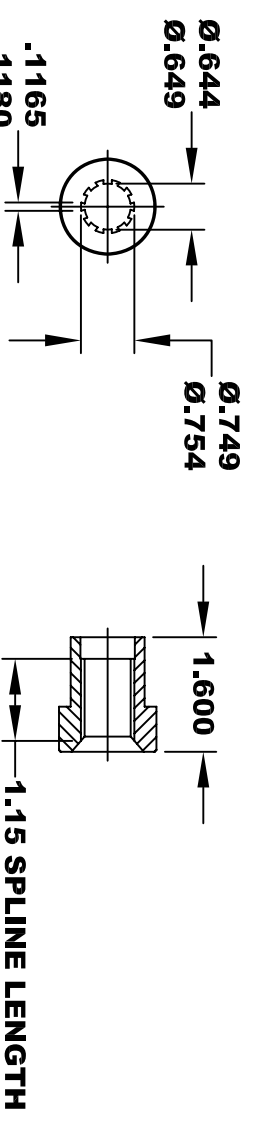
<b>D&amp;D MOTOR SYSTEMS INC.</b>		<b>A2</b>	<b>A1</b>
SYRACUSE N.Y.		<b>F2</b>	<b>F1</b>
<b>Model # ES-168-5</b>			
Mfg. Date	Serial #	Rating	Voltage
xxxx/xx	xxxx	CLASS H	XX
MADE IN U.S.A.			



**TORQUE SPECIFICATION FOR  
POWER CABLE SECURING TOP NUTS**  
 5/16-18 UNC (A1 / A2) - 110 IN / LBS MAX  
 1/4-20 UNC (F1 / F2) - 50 IN / LBS MAX



**MOTOR WIRING CONNECTIONS:**  
**CW ROTATION DRIVE END**  
 CONNECT A1 & F1 TO ONE BATTERY TERMINAL  
 CONNECT A2 & F2 TO OTHER BATTERY TERMINAL  
**CCW ROTATION DRIVE END**  
 SWITCH F1 & F2 CONNECTIONS



**10 TOOTH  
INTERNAL SPLINE  
HARDNESS OF SPLINE  
TO BE R/C 46 - 53 (.02 DEPTH MIN)**

**MOTOR WEIGHT: 48 LBS  
CLASS "H" INSULATION  
PERFORMANCE SPEC: 5**

THIS PRINT IS THE PROPERTY OF D&D MOTOR SYSTEMS INC.  
 DO NOT SCALE  
 WORK TO DIMENSIONS  
 TOLERANCES UNLESS OTHERWISE SPECIFIED ARE AS FOLLOWS  
 .XX \_\_\_\_\_ .01  
 .XXX \_\_\_\_\_ .005  
 .XX ROUGH CASTING \_\_\_\_\_ .03  
 HOLES \_\_\_\_\_ -.001 / +.006  
 ANGLES \_\_\_\_\_ 0°30"

<b>D &amp; D MOTOR SYSTEMS INC</b>			
<b>MOTOR OUTLINE</b>			
SIZE	DRAWN DATE	RELEASE DATE	REV
B	12-22-14		
SCALE	DRAWN BY	DWG NO. / PART NO.	REV
STF	MJG	ES-168-5	