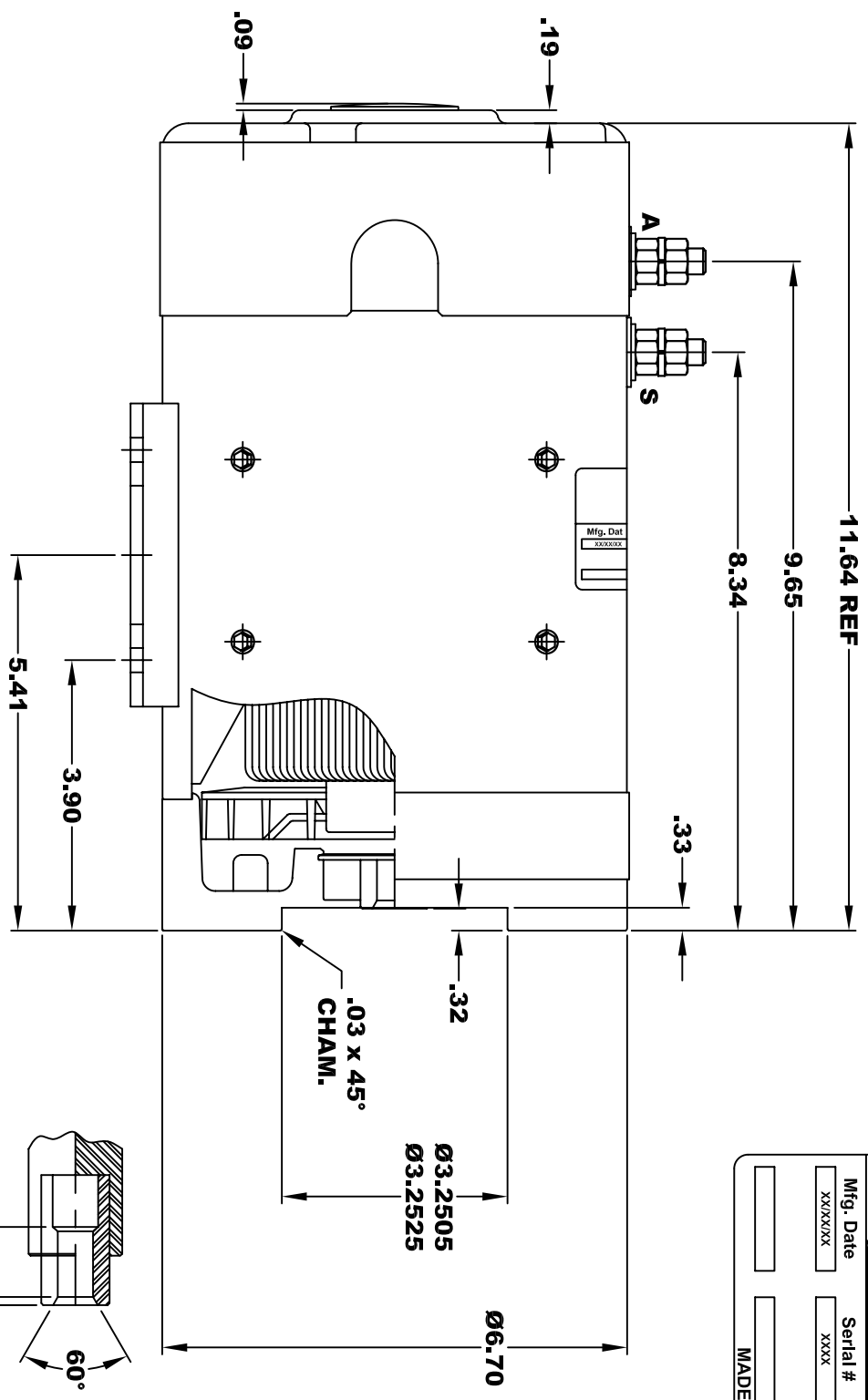


D&D MOTOR SYSTEMS INC.			
SYRACUSE N.Y.			
Model # ES-169-91			
Mfg. Date	Serial #	Rating	Voltage
XX/XX/XX	XXXX	CLASS H	36 / 48
			MADE IN U.S.A.

**TORQUE SPECIFICATION FOR
POWER CABLE SECURING TOP NUTS**
3/8 - 16 UNC - 140 IN / LBS MAX



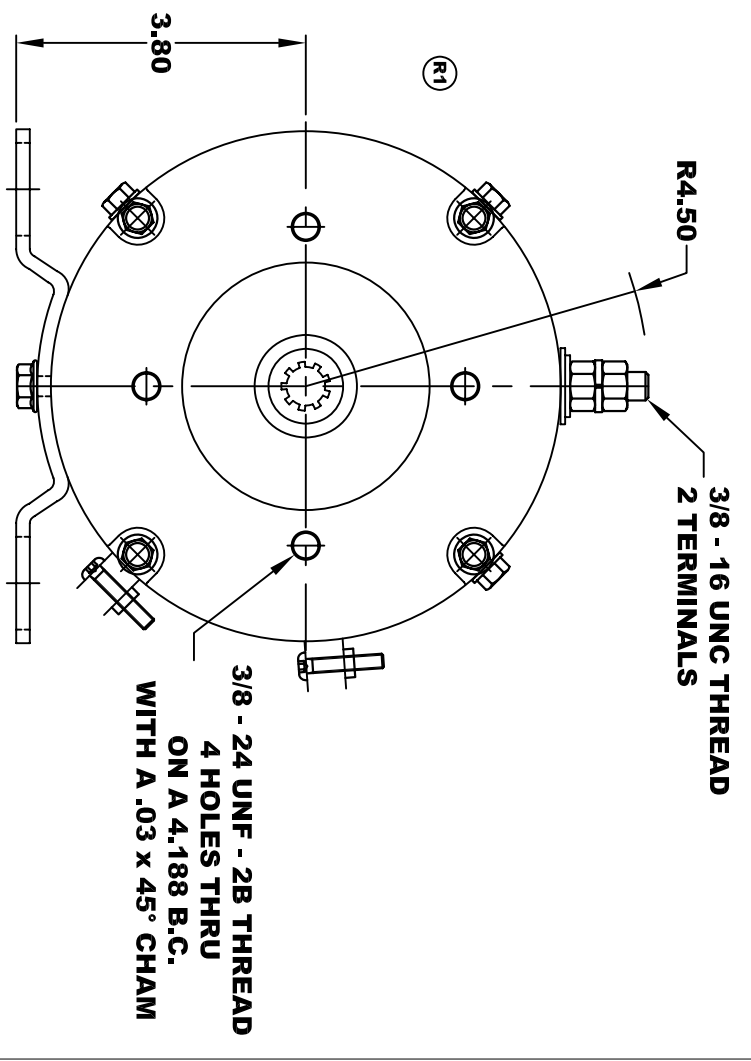
SPLINE HARDNESS — R/C 46 - 52

INTERNAL INVOLUTE SPLINE SPECIFICATION
FLAT ROOT SIDE FIT (PER A.N.S.I. B92.1 CLASS 5)

NO. OF TEETH — 9
SPLINE PITCH — 16 / 32
PRESSURE ANGLE — 30°
BASE Ø — .4871 REF
PITCH Ø — .5625 REF
MAJOR Ø — .651
FORM Ø — .629
MINOR Ø — .509 - .514

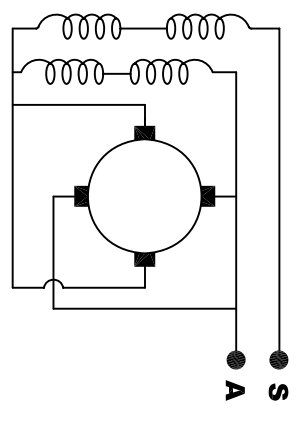
⊙	.010	A
⊓	.010	B

CIRCULAR SPACE WIDTH
MAX ACTUAL — .1008
MIN EFFECTIVE — .0982
MAX DIMENSION BETWEEN TWO PINS — .3972
PIN Ø — .1080



MOTOR WEIGHT: 60 LBS
CLASS "H" INSULATION
PERFORMANCE SPEC: 91

MOTOR WIRING CONNECTIONS:
CW ROTATION DRIVE END
CONNECT ONE POWER CABLE TO TERMINAL A
CONNECT THE OTHER POWER CABLE TO TERMINAL S



ELECTRICAL WIRING DIAGRAM

THIS PRINT IS THE PROPERTY OF D&D MOTOR SYSTEMS INC.
DO NOT SCALE
WORK TO DIMENSIONS
TOLERANCES UNLESS OTHERWISE SPECIFIED ARE AS FOLLOWS

XX — .01
.XXX — .005
.XX ROUGH CASTING — .03
HOLES — -.001 / +.006
ANGLES — 0°30"

D & D MOTOR SYSTEMS INC
MOTOR OUTLINE

SIZE	DRAWN DATE	RELEASE DATE	DWG NO. / PART NO.	REV
B	9-3-15		ES-169-91	R1
SCALE	STF	DRAWN BY	MJG	REV DATE
				2-9-16