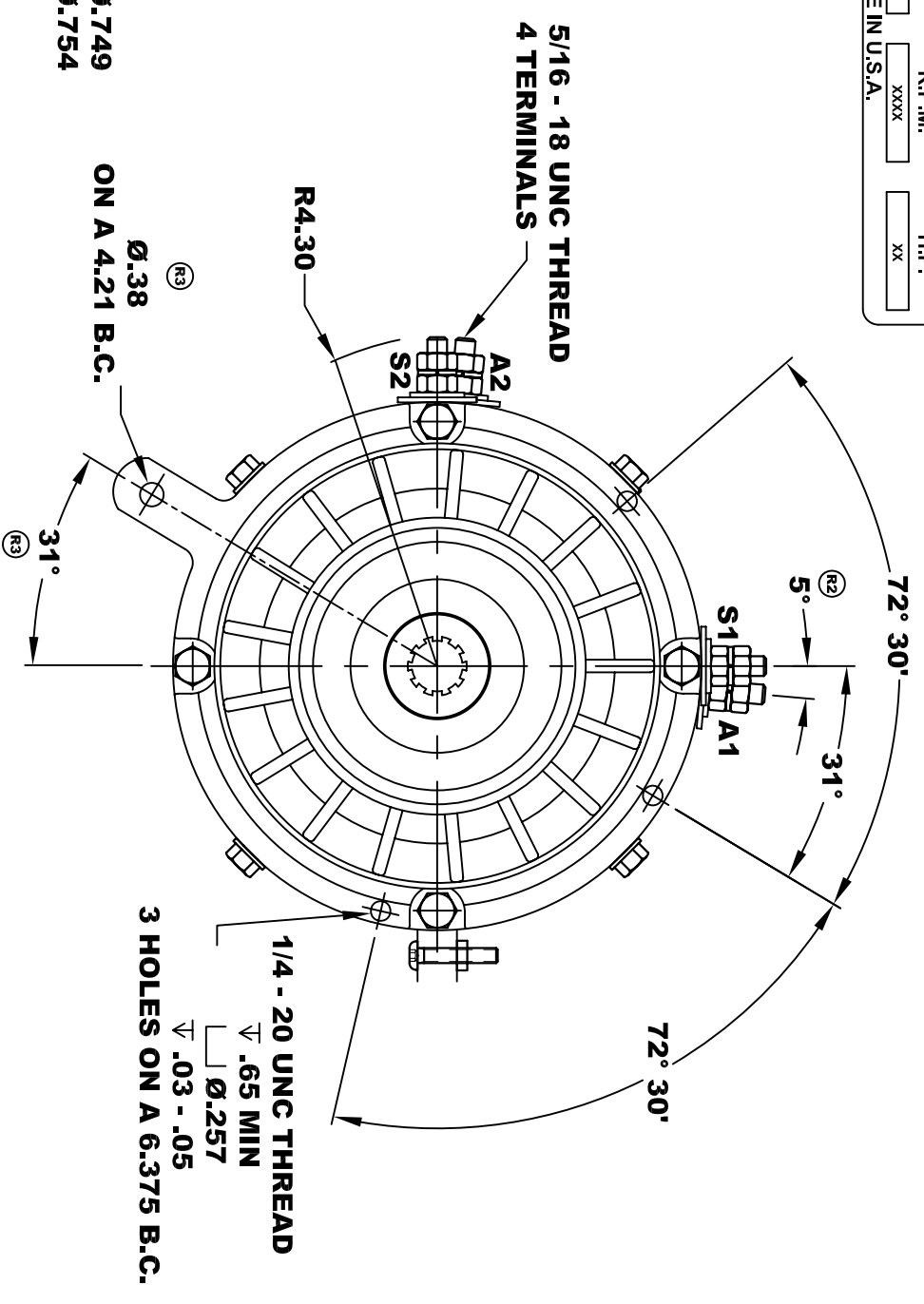
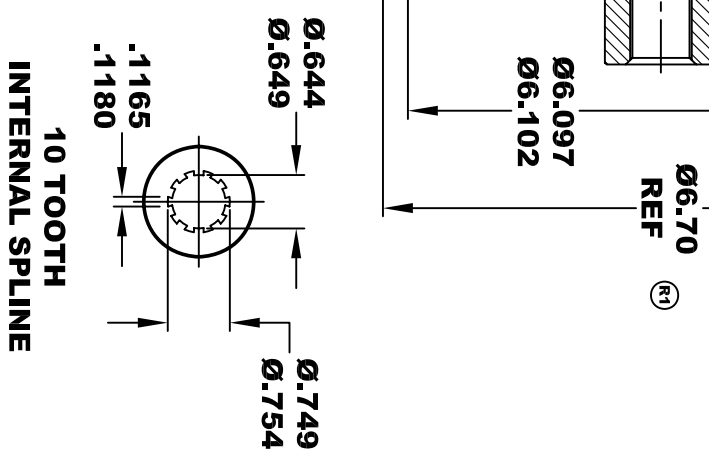
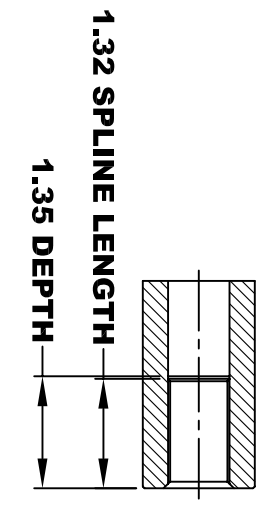
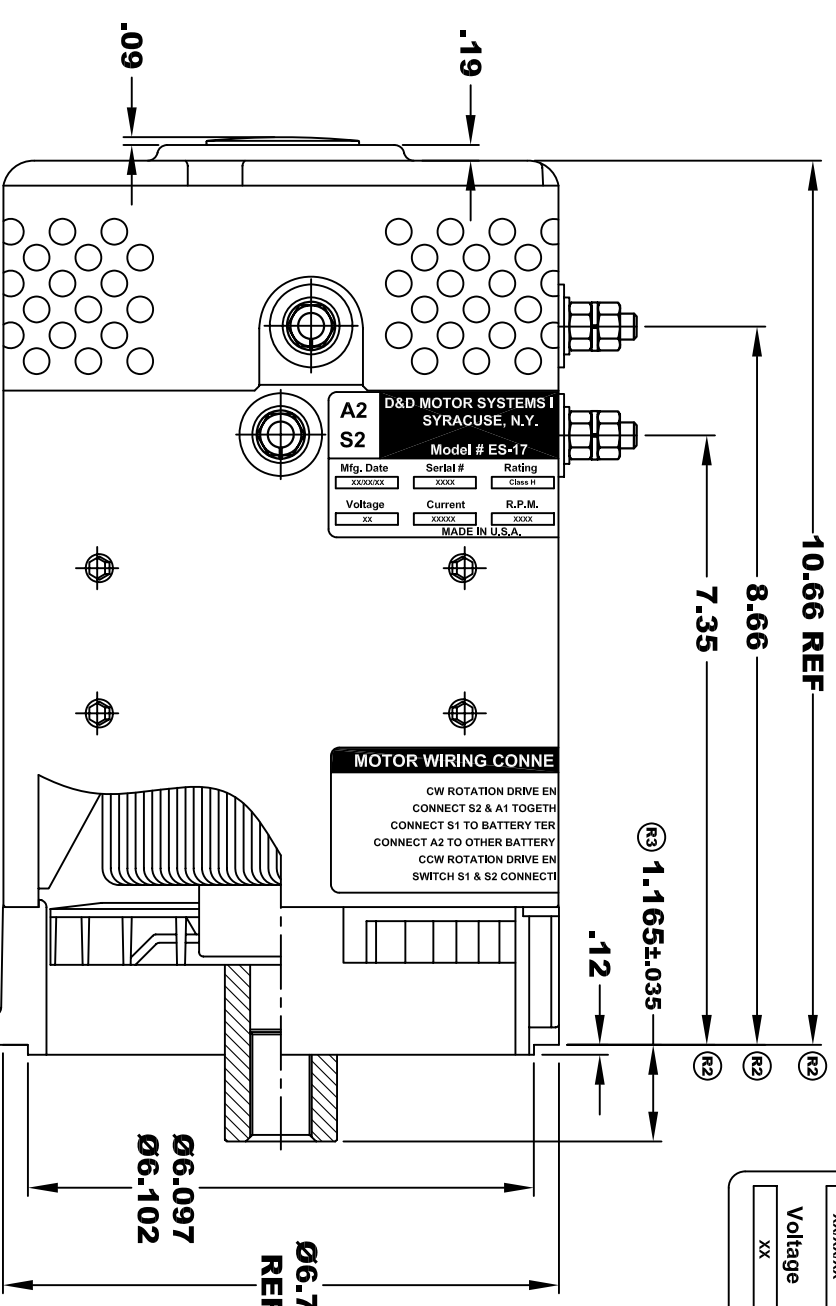


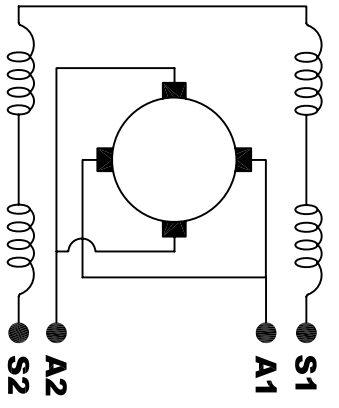
D&D MOTOR SYSTEMS INC.		A1	
SYRACUSE N.Y.		S1	
Model # ES-17			
Mfg. Date	Serial #	Rating	Duty
XXXXXX	XXXX	Class H	S2 - 60 MIN
Voltage	Current	R.P.M.	H.P.
XX	XXXXX	XXXX	XX
MADE IN U.S.A.			



TORQUE SPECIFICATION FOR POWER CABLE SECURING TOP NUTS
5/16-18 UNC - 110 IN / LBS MAX

MOTOR WEIGHT: 50 LBS
CLASS "H" INSULATION
PERFORMANCE SPEC: 3

R1 REVISE VIEW



ELECTRICAL WIRING DIAGRAM

MOTOR WIRING CONNECTIONS:
CW ROTATION DRIVE END
CONNECT S2 & A1 TOGETHER
CONNECT S1 TO BATTERY TERMINAL
CCW ROTATION DRIVE END
CONNECT A2 TO OTHER BATTERY TERMINAL
SWITCH S1 & S2 CONNECTIONS

THIS PRINT IS THE PROPERTY OF D&D MOTOR SYSTEMS INC.
 DO NOT SCALE
 WORK TO DIMENSIONS
 TOLERANCES UNLESS OTHERWISE SPECIFIED ARE AS FOLLOWS

.XX	.01
.XXX	.005
.XX ROUGH CASTING	.03
HOLES	-.001 / +.006
ANGLES	0°30"

D & D MOTOR SYSTEMS INC	
MOTOR OUTLINE	
SIZE	DRAWN DATE
B	11-13-02
SCALE	STF
RELEASE DATE	DWG NO. / PART NO.
	ES-17
REV	REV DATE
R3	9-7-05