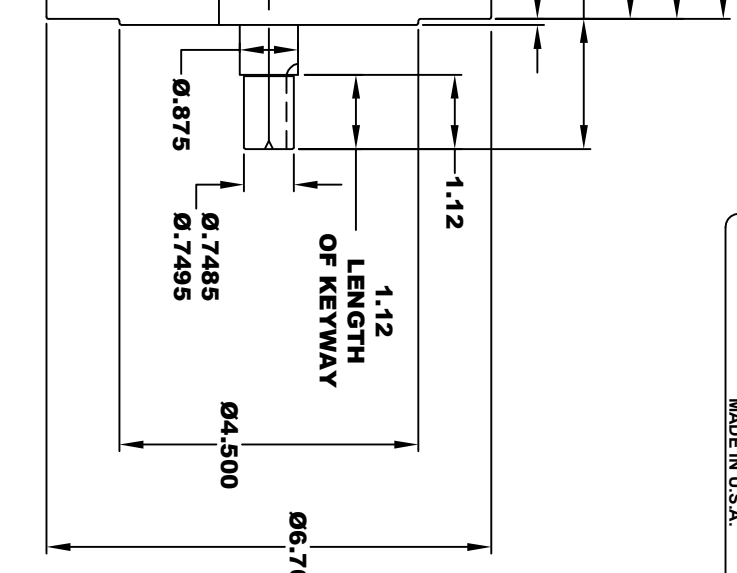
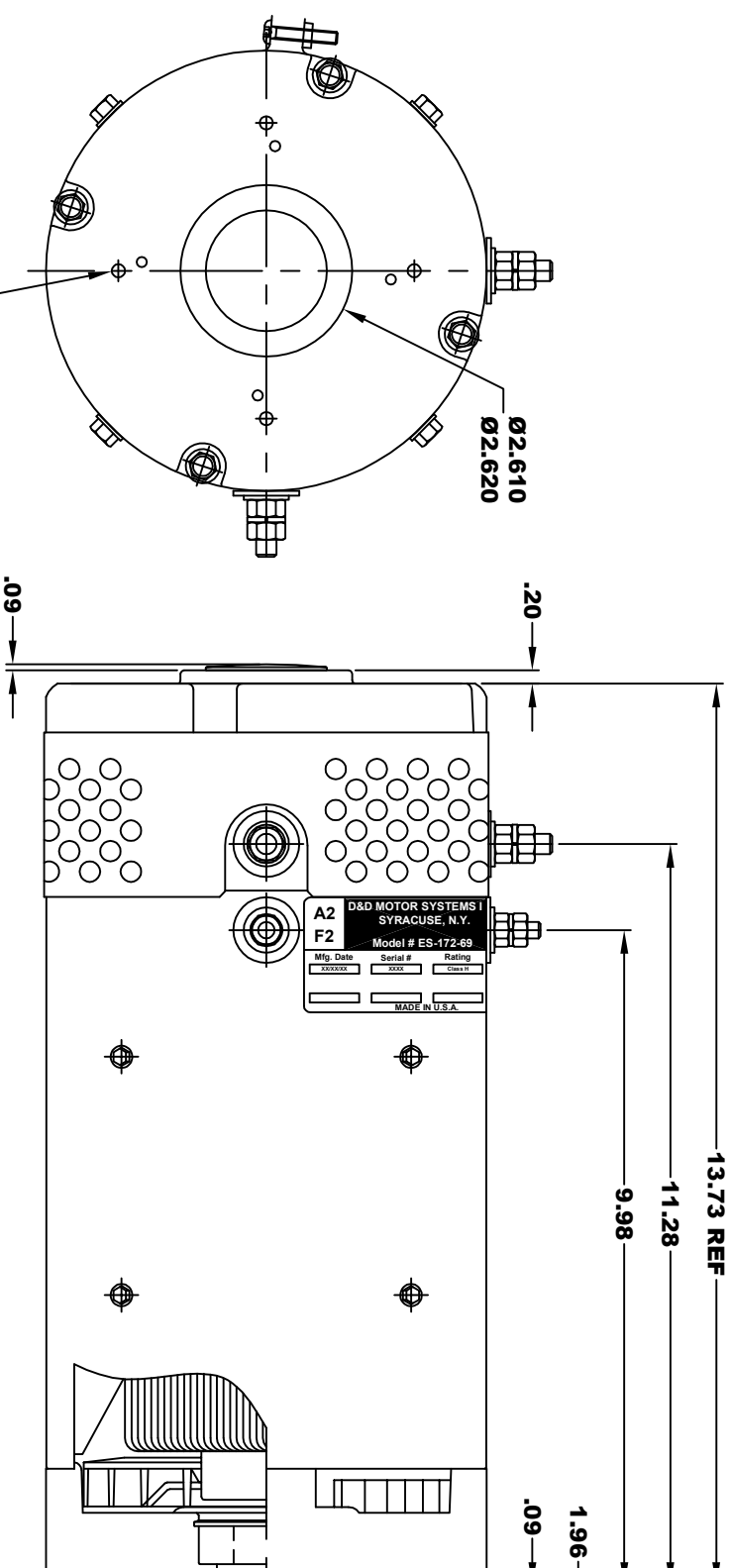


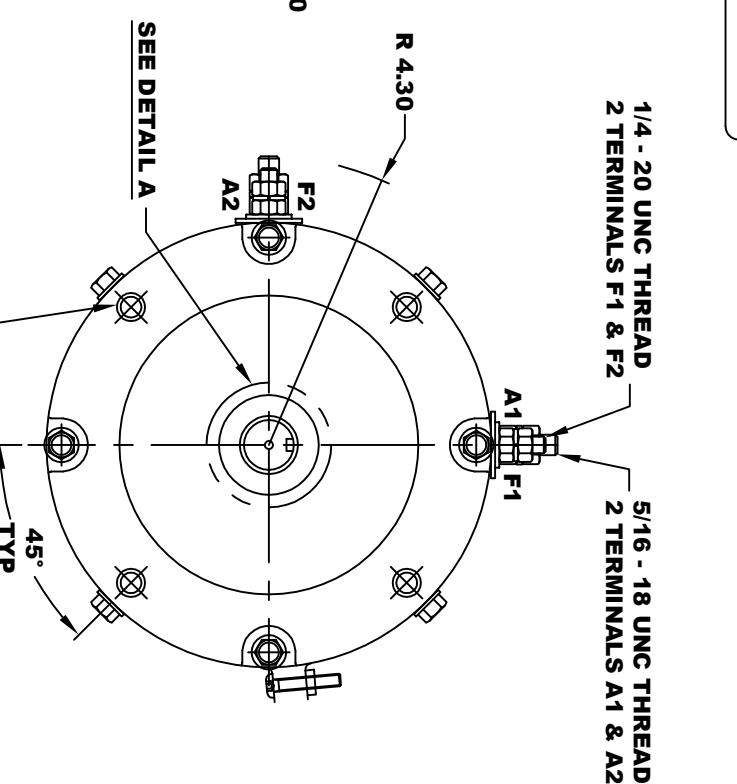
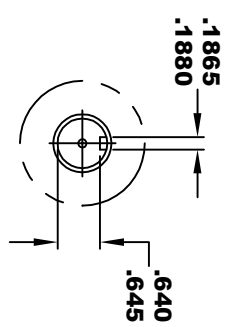
DRAFT

D&D MOTOR SYSTEMS INC.		A1
SYRACUSE N.Y.		F1
Model # ES-172-69		
Mfg. Date	Serial #	Rating
XXXXXX	XXXX	Class H
		Voltage
		XX
MADE IN U.S.A.		

**TORQUE SPECIFICATION FOR
POWER CABLE SECURING TOP NUTS**
5/16-18 UNC (A1 / A2) - 110 IN / LBS MAX
1/4-20 UNC (F1 / F2) - 50 IN / LBS MAX

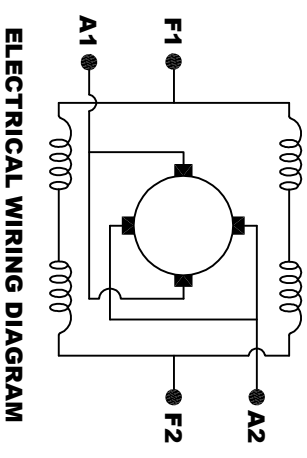


1/4-20 UNC THREAD
▽.625 MIN
EQUALLY SPACED
ON A Ø4.50 B.C.
4 PLACES



3/8 - 16 UNC THREAD
▽.65 MINIMUM
.03 -.05 x 45° CHAMFER
4 PLACES, ON A Ø5.875 B.C.

MOTOR WEIGHT: 79 LBS
CLASS "H" INSULATION
PERFORMANCE SPEC: 72



MOTOR WIRING CONNECTIONS:
CW ROTATION DRIVE END
CONNECT A1 & F1 TO ONE BATTERY TERMINAL
CONNECT A2 & F2 TO OTHER BATTERY TERMINAL
CCW ROTATION DRIVE END
SWITCH F1 & F2 CONNECTIONS

THIS PRINT IS THE PROPERTY OF D&D MOTOR SYSTEMS INC.
DO NOT SCALE
WORK TO DIMENSIONS
TOLERANCES UNLESS OTHERWISE SPECIFIED ARE AS FOLLOWS

.XX	.01
.XXX	.005
.XX ROUGH CASTING	.03
HOLES	-.001 / +.006
ANGLES	0°30"

D & D MOTOR SYSTEMS INC

MOTOR OUTLINE

SIZE	DRAWN DATE	RELEASE DATE	DWG NO. / PART NO.	REV
B	8-5-20		ES-172-69	
SCALE	STF	DRAWN BY	MJG	REV DATE