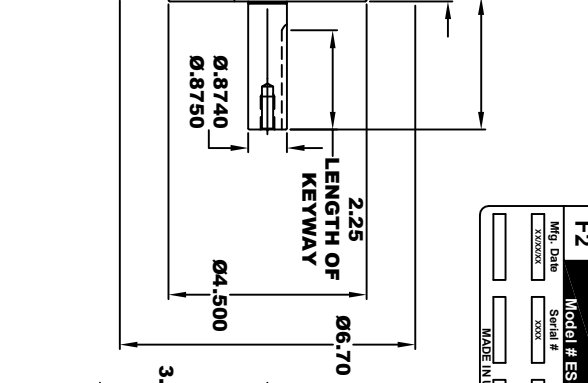
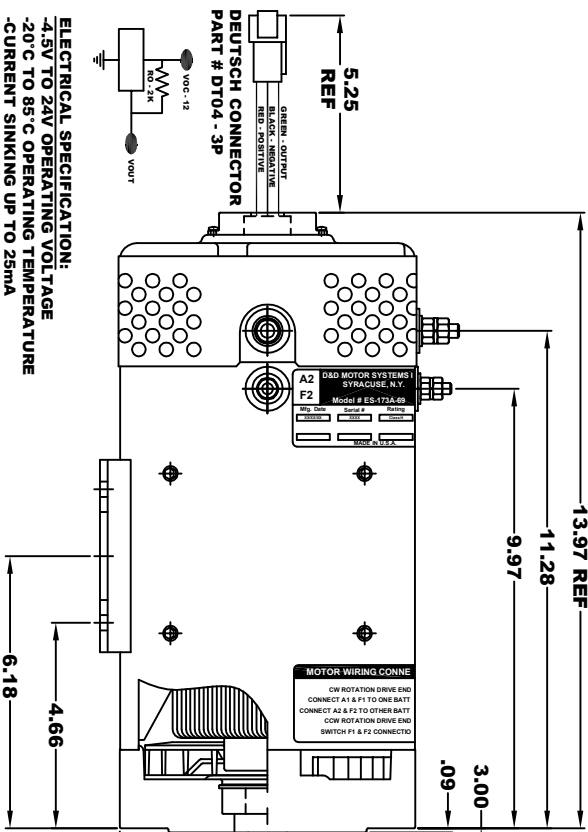


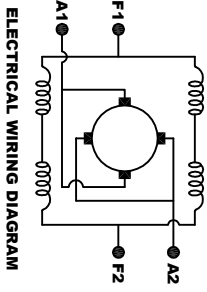
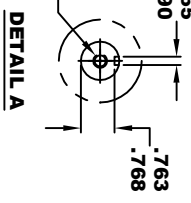
A2		D&D MOTOR SYSTEMS INC.		A1	
SYRACUSE N.Y.		Model # ES-173A-69		F1	
Wdg. Data	Serial #	Rating	Class #	Volts	Rev.
X1202XX	XXXX			50 / 270	
MADE IN U.S.A.					

**TORQUE SPECIFICATION FOR
POWER CABLE SECURING TOP NUTS**
 5/16-18 UNC (A1 / A2) - 110 IN / LBS MAX
 1/4-20 UNC (F1 / F2) - 50 IN / LBS MAX

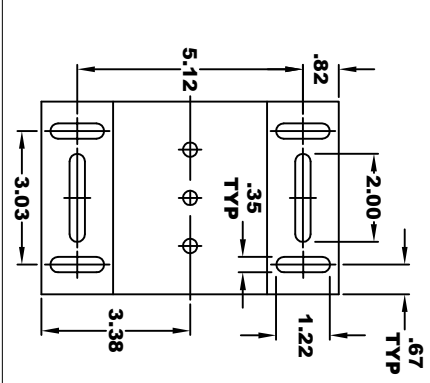


ELECTRICAL SPECIFICATION:
 -4.5V TO 24V OPERATING VOLTAGE
 -20°C TO 85°C OPERATING TEMPERATURE
 -CURRENT SINKING UP TO 25mA
 -AN EXTERNAL OUTPUT PULL UP RESISTOR IS REQUIRED
 -SENSOR IS DESIGNED TO OPERATE WITH 2 N/S POLEPAIRS
 -THE OPERATIONAL DISTANCE BETWEEN THE MAGNET
 AND THE HOUSING, INCLUDING ANY RUNOUT
 SHOULD NOT EXCEED .030 INCHES

5/16 - 18 UNC THREAD
 V .75



MOTOR WIRING CONNECTIONS:
 CW ROTATION DRIVE END
 CONNECT A1 & F1 TO ONE BATTERY TERMINAL
 CONNECT A2 & F2 TO OTHER BATTERY TERMINAL
 CCW ROTATION DRIVE END
 SWITCH F1 & F2 CONNECTIONS



MOTOR WEIGHT: 69 LBS
CLASS "H" INSULATION
PERFORMANCE SPEC: 69

THIS PRINT IS THE PROPERTY OF D&D MOTOR SYSTEMS INC.
 DO NOT SCALE
 WORK TO DIMENSIONS
 TOLERANCES UNLESS OTHERWISE SPECIFIED ARE AS FOLLOWS
 .XX----- .01
 .XXX----- .005
 .XX ROUGH CASTING ----- .03
 HOLES ----- .001 / +.006
 ANGLES ----- 0-30°

D & D MOTOR SYSTEMS INC	
MOTOR OUTLINE	
SIZE	DATE
B	8-27-24
SCALE	STF
DWG NO. / PART NO.	REV
ES-173A-69	
DRAWN BY	REV DATE
MJG	