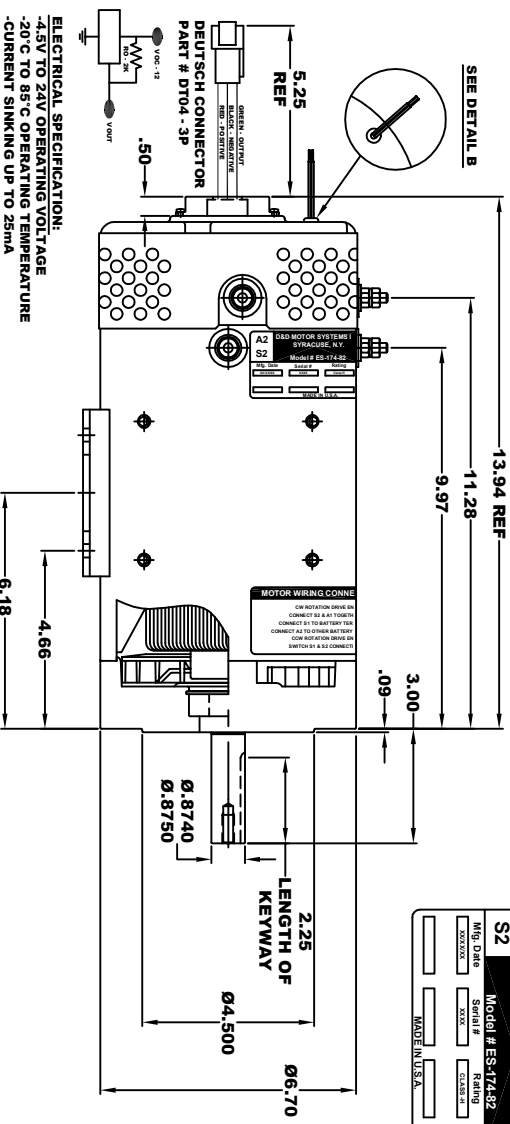
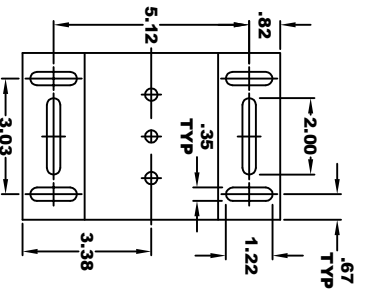
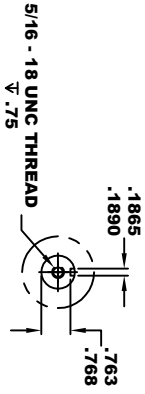


A2		D&D MOTOR SYSTEMS INC.		A1	
SYRACUSE N.Y.		SYRACUSE N.Y.		SYRACUSE N.Y.	
Model #	ES-174-82	Rating		Voltage	3.0V/20V
Serial #	XXXX	Class-B			
Mfg. Date	XXXXXX	MADE IN U.S.A.			

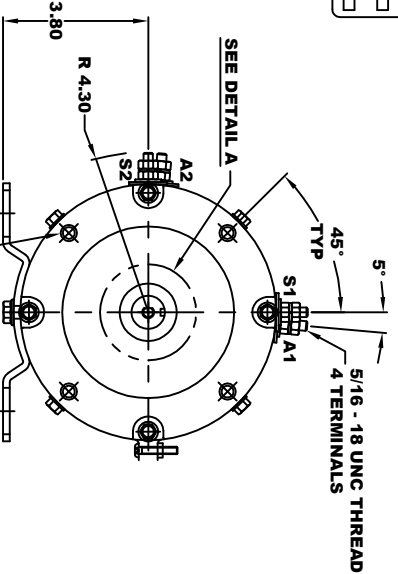


ELECTRICAL SPECIFICATION:
 4.5V TO 24V OPERATING VOLTAGE
 -20°C TO 65°C OPERATING TEMPERATURE
 -CURRENT SINKING UP TO 250mA
 -AN INTERNAL OUTPUT PULSED RESISTOR IS REQUIRED
 -SENSOR IS DESIGNED TO OPERATE WITH 2 N/S POLEPAIRS
 AND THE HOUSING, INCLUDING ANY ROUNDOUT
 SHOULD NOT EXCEED .030 INCHES

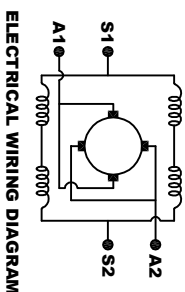


DETAIL B
 THERMAL PROTECTOR ELECTRICAL
 SPECIFICATION: MAX. DC OPERATING
 VOLTAGE: 60 VOLTS/140° C
 NORMALLY OPEN SWITCH

MOTOR WEIGHT: XX LBS
CLASS "H" INSULATION
PERFORMANCE SPEC: 82



**TORQUE SPECIFICATION FOR
 POWER CABLE SECURING TOP NUTS**
 5/16-18 UNC - 110 IN / LBS MAX



MOTOR WIRING CONNECTIONS:
 CW ROTATION DRIVE END
 CONNECT S2 & A1 TOGETHER
 CONNECT S1 TO BATTERY TERMINAL
 CONNECT A2 TO OTHER BATTERY TERMINAL
 CCW ROTATION DRIVE END
 SWITCH S1 & S2 CONNECTIONS

THIS PRINT IS THE PROPERTY OF D&D MOTOR SYSTEMS INC.
 DO NOT SCALE
 WORK TO DIMENSIONS
 TOLERANCES UNLESS OTHERWISE SPECIFIED ARE AS FOLLOWS
 .XX- .01
 .XXX- .005
 .XX ROUGH CASTING .03
 HOLES .001 / ±.006
 ANGLES 0-30°

D & D MOTOR SYSTEMS INC

MOTOR OUTLINE

SIZE	DRAWN DATE	RELEASE DATE	DWG NO. / PART NO.	REV
B	6-24-24		ES-174-82	
SCALE	STF	DRAWN BY	MJG	REV DATE