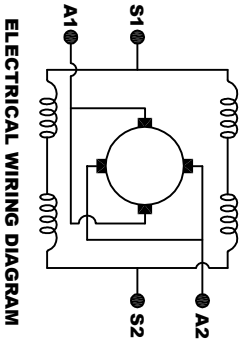
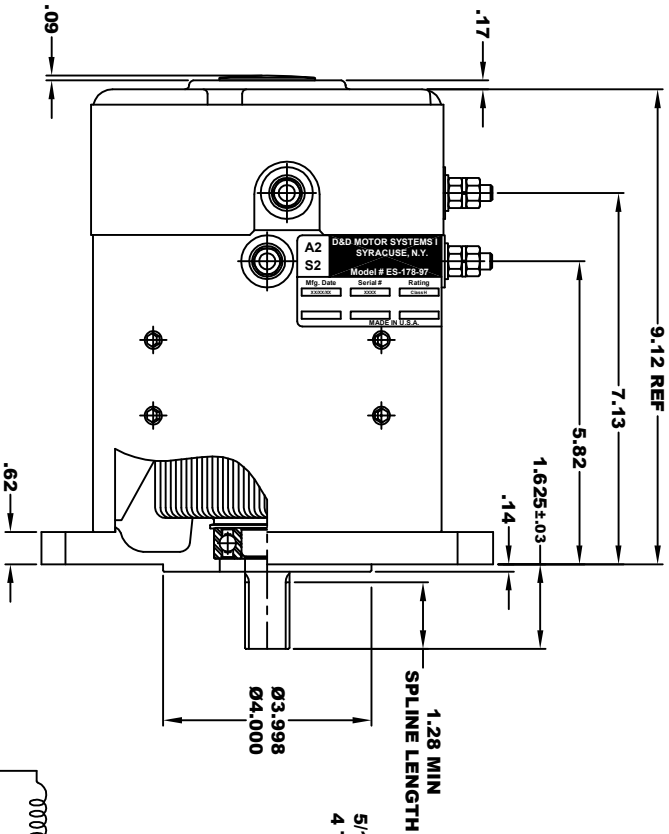
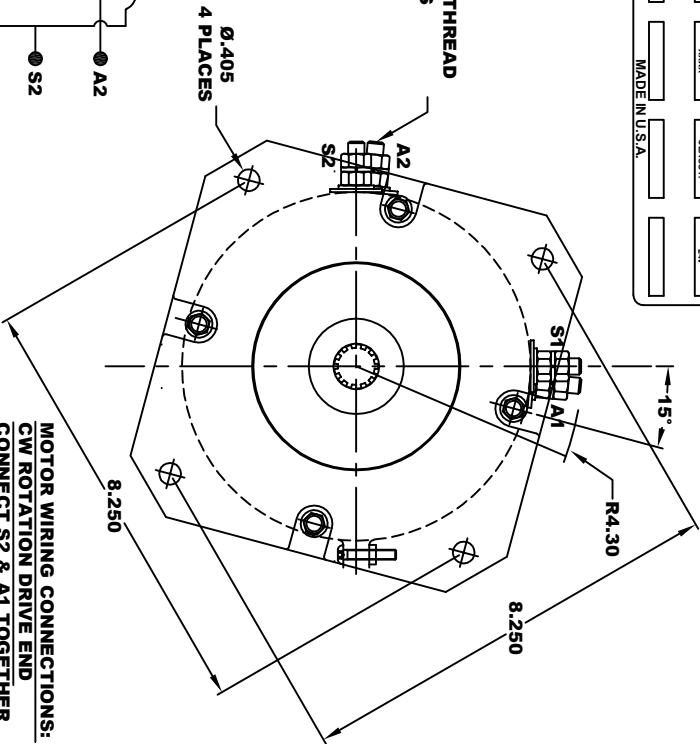


**TORQUE SPECIFICATION FOR
POWER CABLE SECURING TOP NUTS
5/16-18 UNC - 110 IN / LBS MAX**

D&D MOTOR SYSTEMS INC. SYRACUSE N.Y.			
A2	S2	A1	S1
Model # ES-178-97			
Mfg. Date	Serial #	Rating	Voltage
XXXXXX	XXXX	CLASS H	24V
MADE IN U.S.A.			



ELECTRICAL WIRING DIAGRAM



**MOTOR WIRING CONNECTIONS:
CW ROTATION DRIVE END
CONNECT S2 & A1 TOGETHER
CONNECT S1 TO BATTERY TERMINAL
CONNECT A2 TO OTHER BATTERY TERMINAL
CCW ROTATION DRIVE END
SWITCH S1 & S2 CONNECTIONS**

EXTERNAL INVOLUTE SPLINE DATA	
STANDARD	ANSI B92.1 - 1996
ROOT TYPE	FLAT
FIT TYPE	SIDE
NUMBER OF TEETH	13
SPLINE PITCH	16 / 32
PRESSURE ANGLE	30°
MAJOR DIAMETER	.873±.001
CIRCULAR TOOTH THICKNESS	
TOLERANCE CLASS FIT	5
MAX EFFECTIVE	0.0982
MIN ACTUAL	0.0956

**MOTOR WEIGHT: XX LBS
CLASS "H" INSULATION
PERFORMANCE SPEC: 97**

THIS PRINT IS THE PROPERTY OF D&D MOTOR SYSTEMS INC.
DO NOT SCALE
WORK TO DIMENSIONS
TOLERANCES UNLESS OTHERWISE SPECIFIED ARE AS FOLLOWS
XX .01
XXX .005
XX RROUGH CASTING .03
HOLES .001 / +.006
ANGLES -0.30°

D & D MOTOR SYSTEMS INC

MOTOR OUTLINE

SIZE	DRAWN DATE	RELEASE DATE	DWG NO. / PART NO.	REV
B	10-16-24	ES-178-97		
SCALE	STF	DRAWN BY	MJG	REV DATE