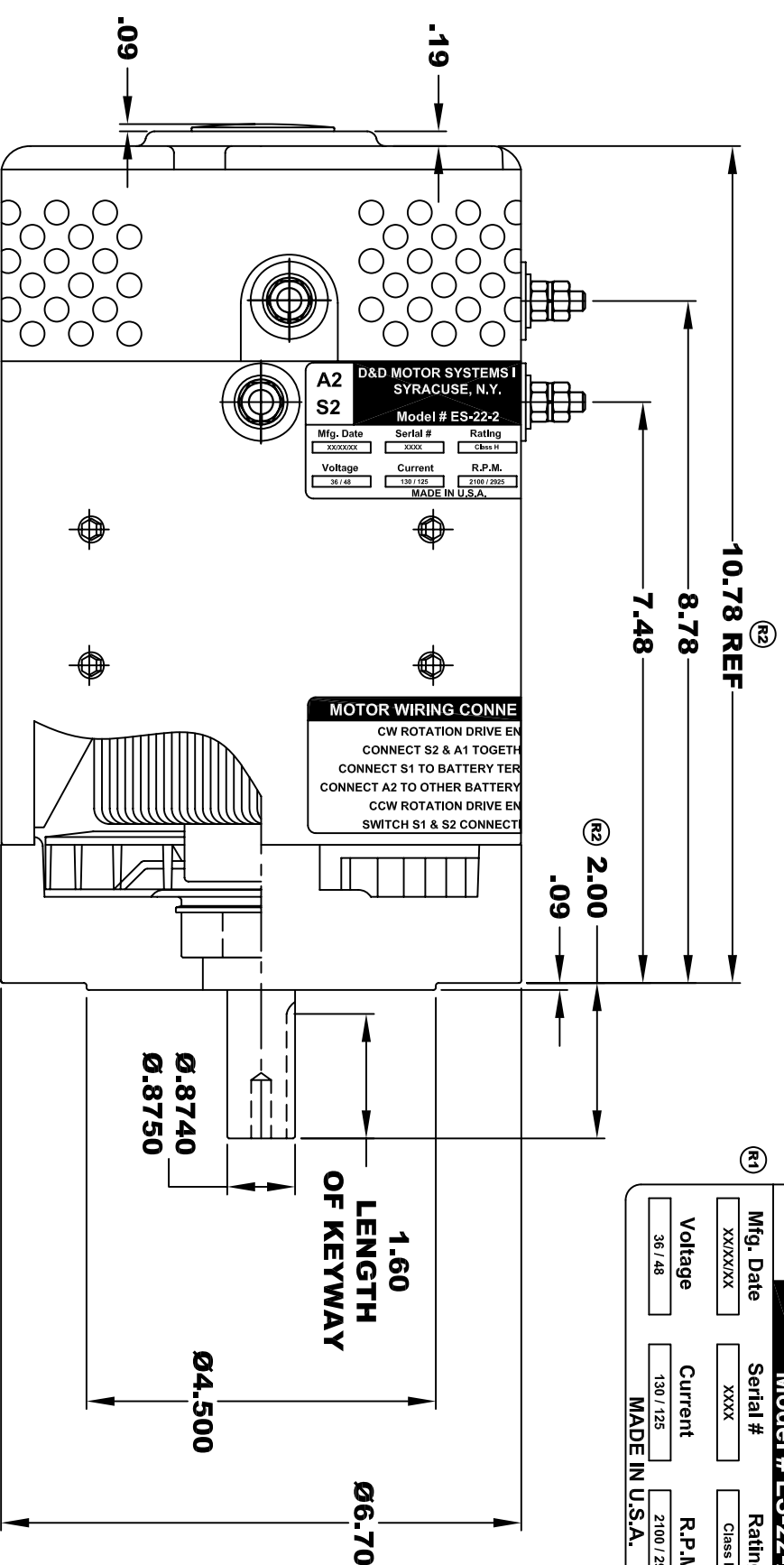
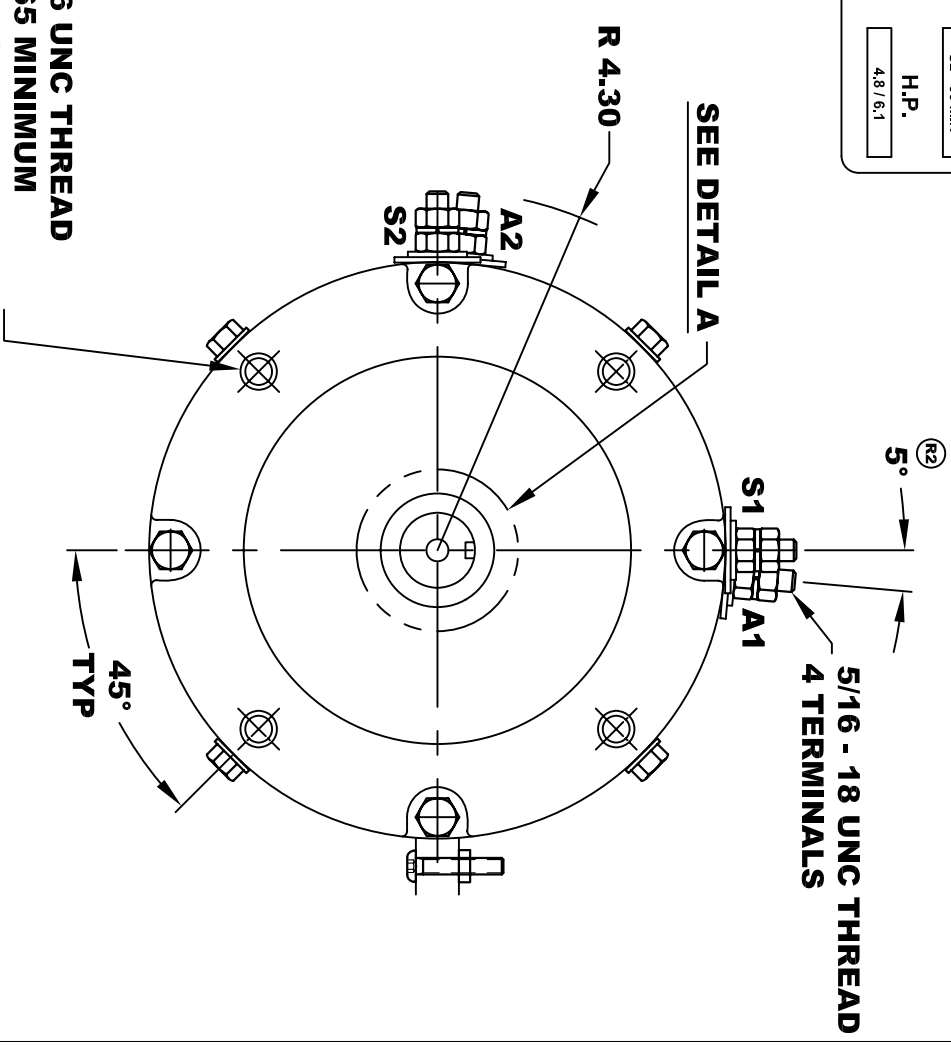


**TORQUE SPECIFICATION FOR
POWER CABLE SECURING TOP NUTS
5/16-18 UNC - 110 IN / LBS MAX**

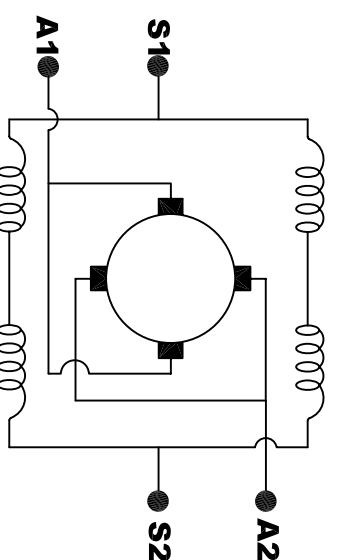
A2		A1	
D&D MOTOR SYSTEMS INC. SYRACUSE N.Y. Model # ES-22-2			
Mfg. Date	Serial #	Rating	Duty
XXXXXX	XXXX	Class H	S2-60 MIN
Voltage	Current	R.P.M.	H.P.
36 / 48	130 / 125	2100 / 2925	4.8 / 6.1
MADE IN U.S.A.			



**3/8 - 16 UNC THREAD
↓ .65 MINIMUM
.03-.05 x 45° CHAMFER
4 PLACES, ON A Ø5.875 B. C.**



**MOTOR WEIGHT: 50 LBS
CLASS "H" INSULATION
PERFORMANCE SPEC: 2**



**MOTOR WIRING CONNECTIONS:
CW ROTATION DRIVE END
CONNECT S2 & A1 TOGETHER
CONNECT S1 TO BATTERY TERMINAL
CCW ROTATION DRIVE END
CONNECT A2 TO OTHER BATTERY TERMINAL
SWITCH S1 & S2 CONNECTIONS**

THIS PRINT IS THE PROPERTY OF D&D MOTOR SYSTEMS INC.
DO NOT SCALE
WORK TO DIMENSIONS
TOLERANCES UNLESS OTHERWISE SPECIFIED ARE AS FOLLOWS
.XX _____ .01
.XXX _____ .005
.XX ROUGH CASTING _____ .03
HOLES _____ -.001 / +.006
ANGLES _____ 0°30"

D & D MOTOR SYSTEMS INC			
MOTOR OUTLINE			
SIZE	DRAWN DATE	RELEASE DATE	DWG NO. / PART NO.
B	5-23-02		ES-22-2 (R3)
SCALE	STF	DRAWN BY	MJG
			REV DATE
			2-2-04