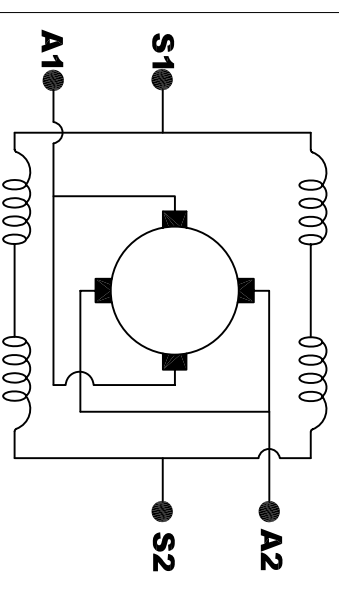
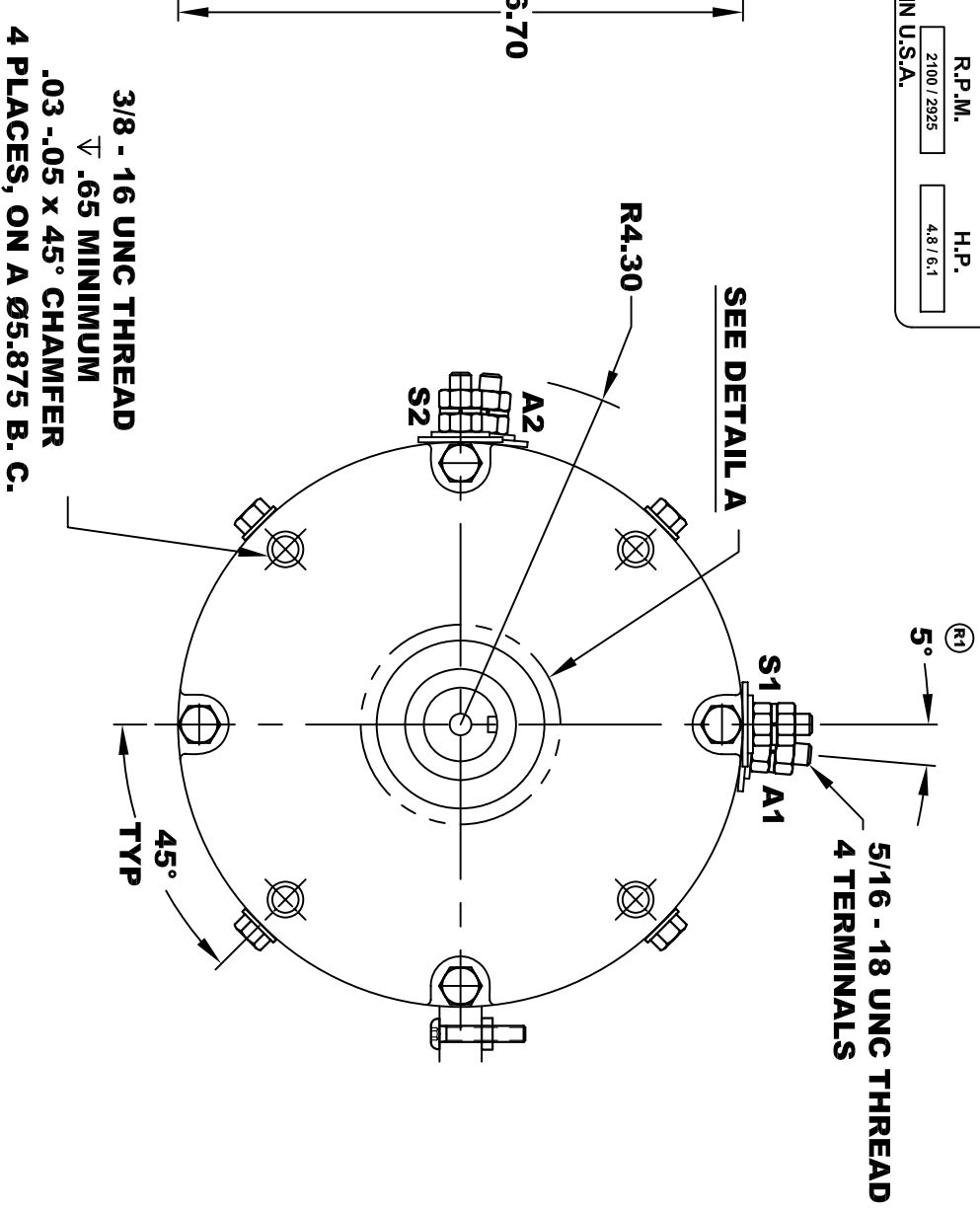
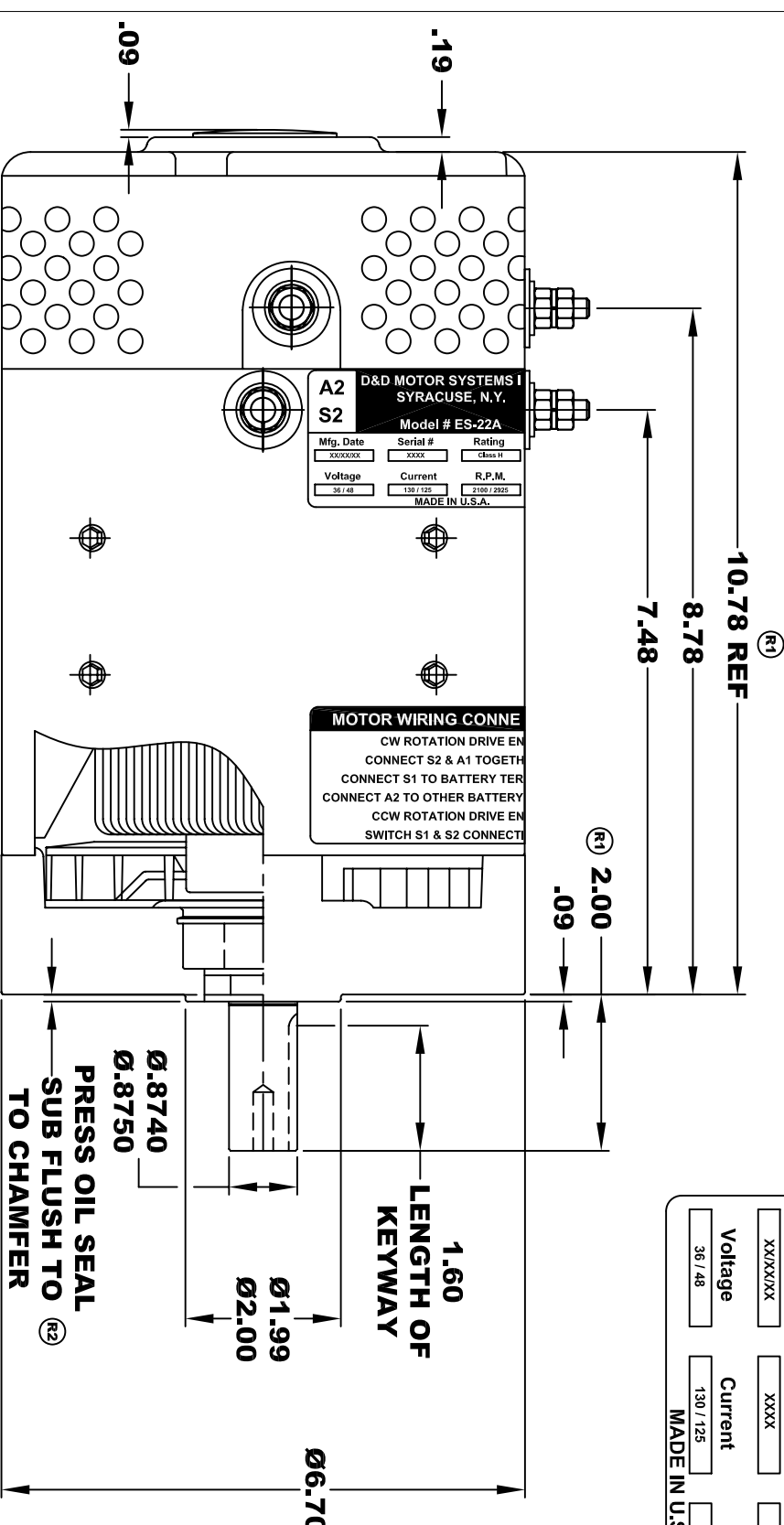


<b>A2</b>		<b>D&amp;D MOTOR SYSTEMS INC.</b>		<b>A1</b>	
<b>S2</b>		<b>SYRACUSE N.Y.</b>		<b>S1</b>	
<b>Model # ES-22A</b>					
Mfg. Date	Serial #	Rating	Duty		
XX/XX/XX	XXXX	Class H	S2 - 60 MIN		
Voltage	Current	R.P.M.	H.P.		
36 / 48	130 / 125	2100 / 2925	4.8 / 6.1		
MADE IN U.S.A.					



**ELECTRICAL WIRING DIAGRAM**

**MOTOR WIRING CONNECTIONS:**  
**CW ROTATION DRIVE END**  
 CONNECT S2 & A1 TOGETHER  
 CONNECT S1 TO BATTERY TERMINAL  
**CCW ROTATION DRIVE END**  
 CONNECT A2 TO OTHER BATTERY TERMINAL  
 SWITCH S1 & S2 CONNECTIONS

**TORQUE SPECIFICATION FOR POWER CABLE SECURING TOP NUTS**  
**5/16-18 UNC - 110 IN / LBS MAX**

**MOTOR WEIGHT: 50 LBS**  
**CLASS "H" INSULATION**  
**PERFORMANCE SPEC: 2**

THIS PRINT IS THE PROPERTY OF D&D MOTOR SYSTEMS INC.  
 DO NOT SCALE  
 WORK TO DIMENSIONS  
 TOLERANCES UNLESS OTHERWISE SPECIFIED ARE AS FOLLOWS

.XX	_____	.01
.XXX	_____	.005
.XX	ROUGH CASTING	.03
HOLES	_____	-.001 / +.006
ANGLES	_____	0°30"

<b>D &amp; D MOTOR SYSTEMS INC</b>			
<b>MOTOR OUTLINE</b>			
SIZE	DRAWN DATE	RELEASE DATE	DWG NO. / PART NO.
B	12-2-02		ES-22A
SCALE	DRAWN BY	REV DATE	REV
STF	MJG	4-12-04	R2